

Withdrawable circuit breaker in Belgium





Overview

Should you choose a fixed or withdrawable circuit breaker?

One of the critical decisions when designing or upgrading switchgear is choosing between fixed and withdrawable circuit breakers. Each type has its advantages and is suited for different applications. The choice depends on various factors, including reliability, maintenance requirements, operational flexibility, and cost.

What is a withdrawable circuit breaker?

Applications that require frequent switching, testing, or reconfiguration of circuits benefit from withdrawable circuit breakers. They enable quick removal and replacement without shutting down the entire switchgear, making them ideal for industrial plants, power stations, and mission-critical facilities.

What is the difference between fixed switchgear and withdrawable circuit breaker?

As mentioned earlier, fixed switchgear has the disadvantage of being difficult to overhaul when the circuit breaker fails, leading to prolonged power outages. Therefore, withdrawable circuit breakers better meet customer requirements. Is the center-mounted, horizontal draw-out structure the only type available?

.

Why are circuit breakers important?

Circuit breakers play a vital role in electrical switchgear systems, ensuring the protection and control of electrical networks. One of the critical decisions when designing or upgrading switchgear is choosing between fixed and withdrawable circuit breakers. Each type has its advantages and is suited for different applications.



Withdrawable circuit breaker in Belgium



Fixed and Withdrawn Circuit Breakers

Oct 23, 2023 · The withdrawable circuit breaker switchgear needs to be equipped with a separate grounding switch, which is generally on the outlet side, and it is difficult to install on the busbar ...

Withdrawable Indoor Circuit Breaker EDI 36 -72.5 kV

2 days ago · The EDI SK is an indoor live tank SF 6 Autopuffer TM circuit breaker. It has a proven design and 30 years of experience, and 1500 installations globally. The breaker offers a ...



Fixed Device vs Withdrawable Device

May 8, 2025 · When designing electrical projects, depending on the criticality of the installation and its operation, it is essential to consider the use of ...

About the switchgear in several different

...

Dec 3, 2025 · In switchgear applications, the withdrawable structure of circuit breakers can be



divided into three main types, as detailed below:
As ...



SGC

Supplier of medium voltage switchgear. Air insulated (AIS) and gas insulated (GIS) switchgear for primary & secondary distribution.

[NEX 24 , Schneider Electric Belgium](#)

The NEX 24 switchgear is an enclosed, indoor metal unit specifically crafted for indoor applications in HV/MV and MV/MV substations powering industrial and infrastructure facilities.

...



[Fixed Device vs Withdrawable Device](#)

May 8, 2025 · When designing electrical projects, depending on the criticality of the installation and its operation, it is essential to consider the use of fixed or withdrawable devices in ...



About the switchgear in several different circuit breaker forms

Dec 3, 2025 · In switchgear applications, the withdrawable structure of circuit breakers can be divided into three main types, as detailed below: As mentioned earlier, fixed switchgear has ...



Switchgear Circuit Breakers: When to Use Fixed vs. Withdrawable ...

Feb 17, 2025 · Circuit breakers play a vital role in electrical switchgear systems, ensuring the protection and control of electrical networks. One of the critical decisions when designing or ...

[Evolis , Schneider Electric Belgium](#)

Indoor MV vacuum Circuit Breaker for fixed or withdrawable in cradle applications. Please note that Evolis vacuum Circuit Breaker up to 17.5 kV is been replaced by EasyPact EXE vacuum ...



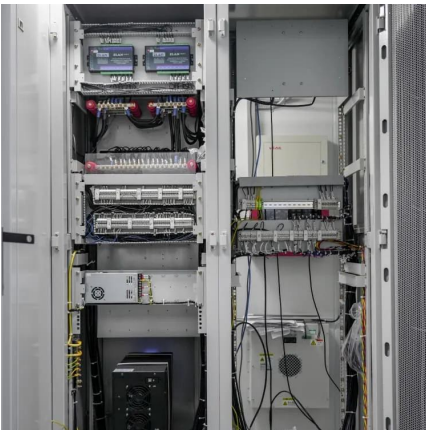
[Withdrawable Indoor Circuit Breaker EDI 36](#)

2 days ago · The EDI SK is an indoor live tank SF6 Autopuffer TM circuit breaker. It has a proven design and 30 years of experience, and 1500 ...



Switchgear Circuit Breakers: When to Use ...

Feb 17, 2025 · Circuit breakers play a vital role in electrical switchgear systems, ensuring the protection and control of electrical networks. One ...



Withdrawable Circuit Breaker

Introduction In addition to the advantages provided by a plug-in base, installation of the circuit breaker on a chassis facilitates handling. Withdrawable chassis circuit breakers offer three ...

Circuit breaker 3WA, withdrawable

Sep 25, 2024 · Energy Electrical power distribution Low-Voltage Components Protection devices Air Circuit Breakers SENTRON 3WA air circuit breakers SENTRON 3WA1 air circuit breakers, ...





Contact Us

For technical specifications, project proposals, or partnership inquiries, please visit:
<https://www.eiei.pl>

Scan QR Code for More Information



<https://www.eiei.pl>