

Wind power generation connected to the power system





Overview

How do wind turbines produce electricity?

The main process includes various steps starting from generation to transmission. Electric power generation: The kinetic energy of the wind is transformed into electricity by the wind turbines. Transformation and adaptation: The electricity initially generated is alternating current (AC), but its voltage is not suitable for transmission.

How does a wind power system work?

These systems monitor real-time data and adjust turbine operations to ensure a steady and reliable supply of electricity, even as wind conditions change. Integrating wind energy into the power grid presents several challenges, including variability, grid stability, and infrastructure limitations.

How does wind power generation affect the power system?

The rapid growth of wind generation has many implications for power system planning, operation and control. Network development, voltage rise, protection, monitoring and control are connection problems common to all wind power generation.

What is wind energy integration?

Wind energy integration requires advanced technologies to address grid stability and reliability issues. These solutions aim to smooth out fluctuations and improve overall system performance. Energy storage systems help balance wind power output. Batteries store excess energy during high winds for use when wind speeds drop.



Wind power generation connected to the power system



Frequency response methods for grid-connected wind power ...

Aug 1, 2023 · This paper compares the current wind power FR technology and explores how to guide the frequency of wind power generation to support the power system.

[Connecting Wind Power Generation to a Power System](#)

Sep 23, 2017 · 1. Introduction Wind power generation uses a natural energy source, and is increasingly being employed because of its low impact on the environment. However, it is ...



[Optimizing power generation in a hybrid ...](#)

Mar 27, 2025 · The rising demand for renewable energy has recently spurred notable advancements in hybrid energy systems that utilize solar and ...

[On Grid Wind Turbine Solutions: Efficient](#)

Apr 14, 2025 · 4. Centralized Grid Connection Centralized on grid wind turbine systems are large in scale, typically used in wind farms or large ...

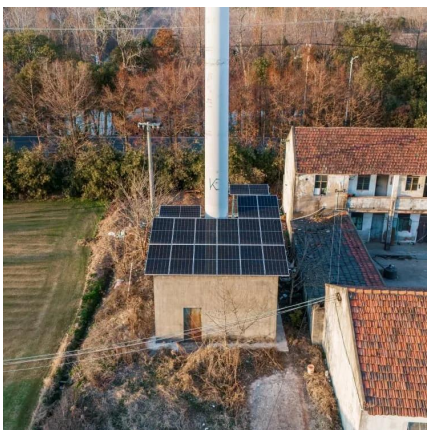


Control and Operation of Grid-Connected ...

It also explores the impact of the emerging technologies of wind turbines and power converters in the integration of wind power systems in power ...

Control of a PMSG based Wind Energy Generation System for Power

Jan 1, 2013 · The study of a Wind Energy Conversion System (WECS) based on Permanent Magnet Synchronous Generator and interconnected to the electric network is described. The ...



Wind Power Generation System Using ...

A comprehensive Wind Power Generation System implemented using MATLAB & Simulink. This project provides detailed modeling and ...



Globally interconnected solar-wind system addresses future ...

May 15, 2025 · A globally interconnected solar-wind power system can meet future electricity demand while lowering costs, enhancing resilience, and supporting a stable, sustainable ...



[Globally interconnected solar-wind system ...](#)

May 15, 2025 · A globally interconnected solar-wind power system can meet future electricity demand while lowering costs, enhancing resilience, and ...



On Grid Wind Turbine Solutions: Efficient & Cost-Effective ...

Apr 14, 2025 · 4. Centralized Grid Connection
Centralized on grid wind turbine systems are large in scale, typically used in wind farms or large wind projects. These systems connect to the ...



[How Do Wind Turbines Work? , Department ...](#)

2 days ago · The terms "wind energy" and "wind power" both describe the process by which the wind is used to generate mechanical power or ...





[Artificial Intelligence and Machine Learning in ...](#)

Feb 3, 2023 · As grid-connected wind farms become more common in the modern power system, the question of how to maximize wind power ...



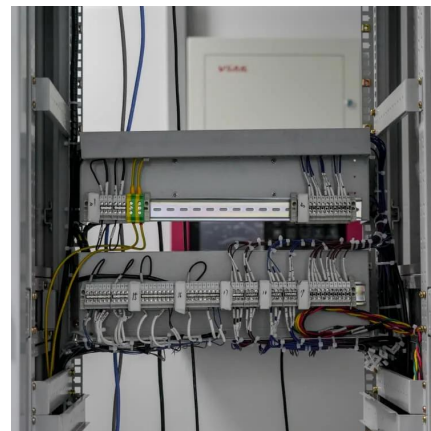
[How are wind farms connected to the electricity grid?](#)

The main process includes various steps starting from generation to transmission. Phases of the connection process Electric power generation: La Kinetic energy of the wind is transformed ...



Stability enhancement control strategy for grid-connected wind power

Jul 1, 2024 · The stability of grid-connected wind power system (GCWPS) is prone to deteriorate due to the impedance interaction between wind turbines and the weak ...



Comprehensive overview of grid interfaced wind energy generation systems

May 1, 2016 · More than 200 research publications on the topic of grid interfaced wind power generation systems have been critically examined, classified and listed for quick reference. ...





Control and Operation of Grid-Connected Wind Energy Systems

It also explores the impact of the emerging technologies of wind turbines and power converters in the integration of wind power systems in power systems. This book utilizes the editors' ...



Comprehensive overview of grid interfaced wind energy generation systems

May 1, 2016 · However, the intermittent and uncertain nature of wind power prevents the wind power plants to be controlled in the same way as conventional bulk units [6]. The knowledge of ...

Wind Energy Systems , IEEE Journals & Magazine , IEEE Xplore

May 16, 2017 · Wind power now represents a major and growing source of renewable energy. Large wind turbines (with capacities of up to 6-8 MW) are widely installed in power distribution ...



Wind Power Integration: Connection and System Operational ...

The rapid growth of wind generation has many implications for power system planning, operation and control. Network development, voltage rise, protection, monitoring and control are ...



[Integrating wind energy into the power grid: Impact and ...](#)

Jan 1, 2020 · The author has proposed methodologies for both stand-alone DFIG and grid-connected with their properties, assets, limitations, and insufficiencies. The authors in [6] have ...

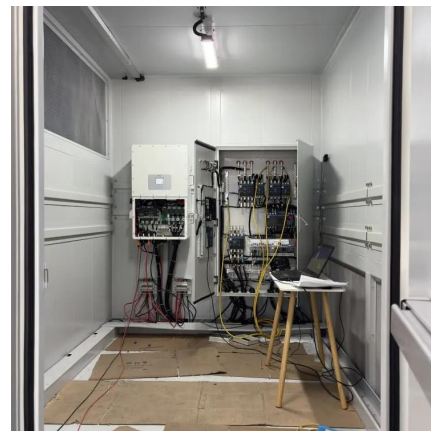


[Wind Energy Grid Integration: Overcoming Challenges and ...](#)

Nov 27, 2024 · Wind energy has become a key player in the global shift towards renewable power. As more wind farms connect to electrical grids, new challenges arise. Grid operators ...

[A comprehensive review of wind power integration and ...](#)

May 15, 2024 · The wind power generation operators, the power system operators, and the electricity customer are three different parties to whom the battery energy storage services ...



Analysis of Grid-Connected Wind Power Generation Systems ...

Dec 14, 2024 · Modeling and simulation of grid-connected wind generation systems using permanent magnet synchronous generator (PMSG) are presented in this paper. A three-phase ...



How are wind farms connected to the ...

The main process includes various steps starting from generation to transmission. Phases of the connection process Electric power ...



How Wind Turbines Are Connected to the Power Grid

Jun 26, 2025 · Empower Your Wind Power Innovation with AI In the fast-evolving landscape of wind turbine technology--where aerodynamic optimization, generator efficiency, and structural ...

Contact Us

For technical specifications, project proposals, or partnership inquiries, please visit:
<https://www.eiei.pl>

Scan QR Code for More Information



<https://www.eiei.pl>