

Wide voltage grid-connected inverter





Overview

What is the control design of a grid connected inverter?

The control design of this type of inverter may be challenging as several algorithms are required to run the inverter. This reference design uses the C2000 microcontroller (MCU) family of devices to implement control of a grid connected inverter with output current control.

Why are grid-connected inverters important?

This dependency leads to fluctuations in power output and potential grid instability. Grid-connected inverters (GCIs) have emerged as a critical technology addressing these challenges. GCIs convert variable direct current (DC) power from renewable sources into alternating current (AC) power suitable for grid consumption .

How to choose a grid-connected PV inverter?

Efficiency: The selection of a grid-connected PV inverter is mainly based on its efficiency. The inverter must be capable to attain a high efficiency over a wide range of loads. Due to the reduced, and high efficiency is achieved. and disconnect it from the grid for safety purposes, while supplying power to the local load. In.

What is a grid-connected microgrid & a photovoltaic inverter?

Grid-connected microgrids, wind energy systems, and photovoltaic (PV) inverters employ various feedback, feedforward, and hybrid control techniques to optimize performance under fluctuating grid conditions.



Wide voltage grid-connected inverter



[A Wide Input Five-Level Inverter With Hybrid ...](#)

Apr 2, 2025 · However, the traditional nonisolated full-bridge inverter has an output AC voltage amplification lower than the DC input voltage and ...

[Effects of Wide Bandgap Devices on the ...](#)

Mar 7, 2025 · A voltage source inverter (VSI) is the key element for efficiently processing energy conversion and connecting PV systems to home loads ...



[Effects of Wide Bandgap Devices on the Inverter ...](#)

Mar 7, 2025 · A voltage source inverter (VSI) is the key element for efficiently processing energy conversion and connecting PV systems to home loads or utility grids. The operation of this ...

[A comprehensive review of grid-connected inverter ...](#)

Oct 1, 2025 · This comprehensive review examines grid-connected inverter technologies



from 2020 to 2025, revealing critical insights that fundamentally challenge industry assumptions ...

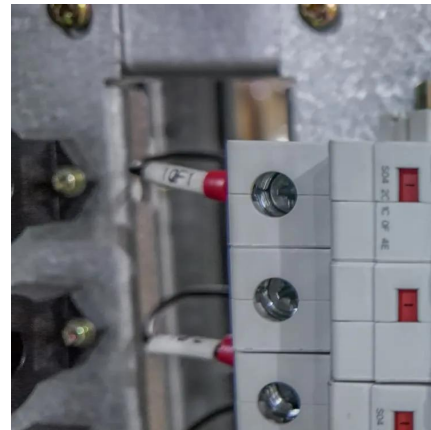


[\(PDF\) A Comprehensive Review on Grid Connected](#)

Aug 13, 2020 · This review article presents a comprehensive review on the grid-connected PV systems. A wide spectrum of different classifications and configurations of grid-connected ...

Energy-Efficient Wide Voltage Range Grid-Tie Inverter for ...

2 days ago · Energy-Efficient Wide Voltage Range Grid-Tie Inverter for Wind Power Integration, Find Details and Price about Grid-Connected Inverter Wind Turbine Inverter from Energy ...



[Common-Ground Type Switching Step-up/Step-down ...](#)

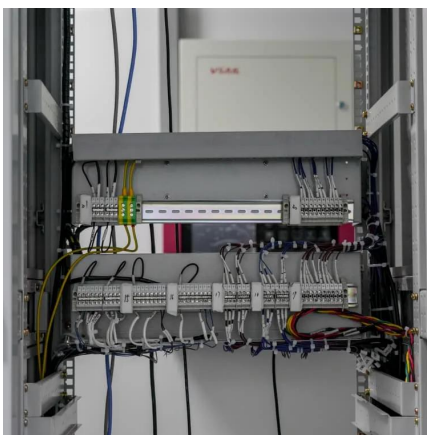
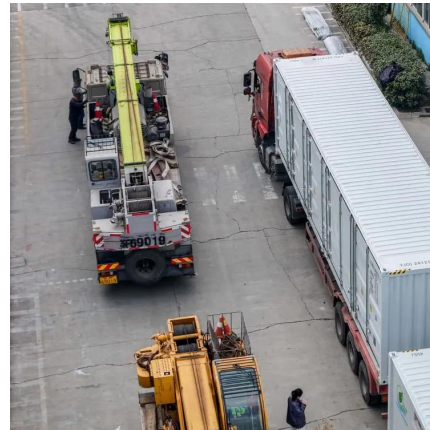
Aug 28, 2024 · In addition, the wide-range voltage input is adjusted through the SSB module to achieve maximum power point operation (MPPTO) to meet the grid-connected voltage ...





[A Wide Input Five-Level Inverter With Hybrid PWM-SPWM ...](#)

Apr 2, 2025 · However, the traditional nonisolated full-bridge inverter has an output AC voltage amplification lower than the DC input voltage and suffers from leakage current problem. To ...



[\(PDF\) A Comprehensive Review on Grid ...](#)

Aug 13, 2020 · This review article presents a comprehensive review on the grid-connected PV systems. A wide spectrum of different classifications ...

[Grid-Connected Inverters: The Ultimate Guide](#)

Jun 11, 2025 · The primary function of a grid-connected inverter is to ensure that the AC power produced is synchronized with the grid voltage and frequency, thereby enabling the safe and ...



A comprehensive review of multi-level inverters, modulation, ...

Jan 3, 2025 · Precise control techniques are often required of grid-connected cascaded MLIs, to inject pure sinusoidal current that is in phase with grid voltage and maintains the UPF.



[Grid Connected Inverter Reference Design \(Rev. D\)](#)

May 11, 2022 · Description This reference design implements single-phase inverter (DC/AC) control using a C2000™ microcontroller (MCU). The design supports two modes of operation ...



[Wide Area Control of Inverter Based Power Grids](#)

Oct 25, 2024 · Grid-integration of inverter-based resources (IBR) affects the frequency stability of power networks due to reduced inertia and deteriorated fast frequency response. Coordinated ...

Contact Us

For technical specifications, project proposals, or partnership inquiries, please visit:
<https://www.eiei.pl>



Scan QR Code for More Information



<https://www.eiei.pl>