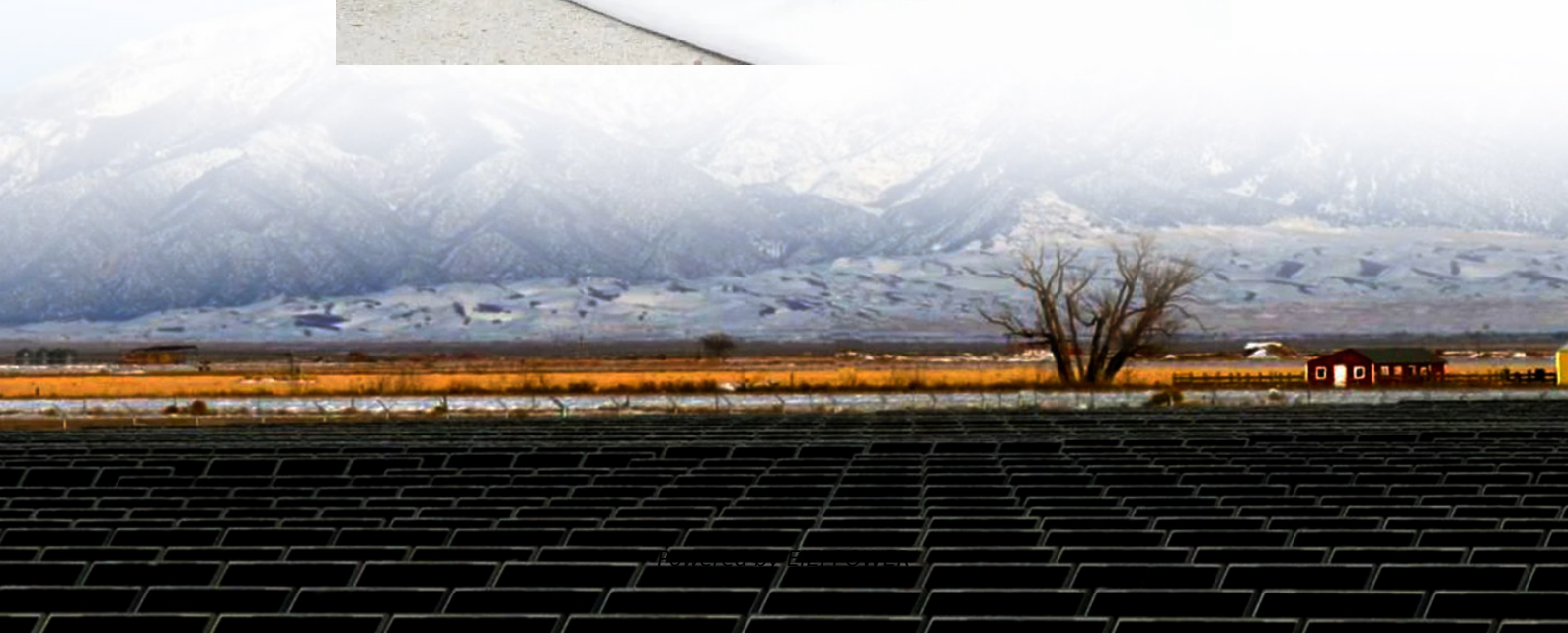


# Where are the base stations located indoors and outdoors





## Overview

---

What does a base station do?

A base station connects your phone to the network. It acts as a hub between mobile devices and the core system. Base stations form the backbone of 4G LTE and 5G networks. They provide the coverage you need for calls and data. Base stations enable voice, data, and internet access. They transmit radio signals within a set area.

Where are base stations located?

Base stations are located in various places, including:

1. Rooftops: Base stations are often installed on the rooftops of buildings, especially in urban areas. This provides a good line of sight and coverage for the surrounding area.
2. Towers: Tall towers are commonly used to mount base stations.

What is an indoor base station?

Indoor base stations in rack format This is the most common type of base station, in which all its components are integrated in a rack-type cabinet, which provides more space for more modules or components. This can enable, for example, redundancy of all components, thereby improving system availability.

What is a base station in a cellular network?

Base stations are the foundational elements that make this connectivity possible, acting as fixed points that bridge the gap between a mobile device's radio signal and the global wired network. They are communication hubs in a cellular network that ensure continuous service as users move throughout a geographical area. What is a Base Station?



## Where are the base stations located indoors and outdoors

---

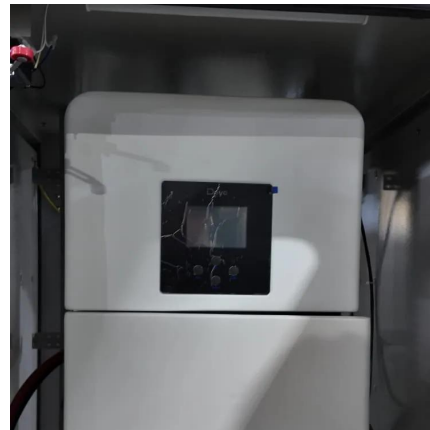


### [Base Stations \(Cell Towers\)](#)

Sep 12, 2023 · Base Stations, also known as Cell Towers, are essential components of mobile communication networks, including 2G, 3G, 4G, and 5G cellular networks. These structures ...

### [What Is a Base Station?](#)

Sep 7, 2025 · Alternatively called the cell tower or cell site, a base station is a tall tower equipped with electronics that transmit data to and cellular ...



### [Base station types: a solution for every deployment scenario](#)

Apr 28, 2021 · Outdoor compact base stations  
These base stations are designed for installation in any type of outdoor scenario. They offer a high degree of IP protection, which allows them to ...



## Base Stations

Jul 23, 2025 · The present-day tele-space is incomplete without the base stations as these constitute an important part of the modern-day scheme ...



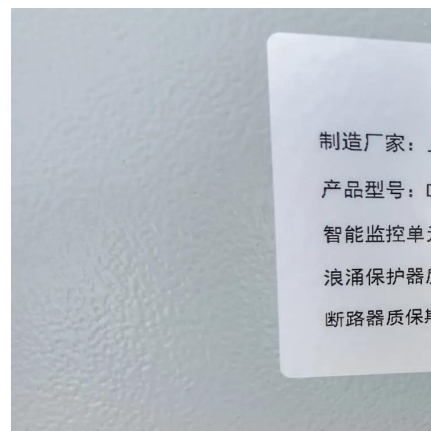
### What Is a Base Station?

Sep 7, 2025 · Alternatively called the cell tower or cell site, a base station is a tall tower equipped with electronics that transmit data to and cellular phones. These towers are often located ...



### Base Stations: The Core and Future of Telecom Networks

Sep 12, 2025 · Macro Base Stations: With the widest coverage, macro base stations are typically installed on high structures like towers or tall buildings, suitable for urban and rural areas. ...



### What are Base Station in Telecommunications?

Nov 21, 2025 · The Role and Importance of Base Stations Base stations enable voice, data, and internet access. They transmit radio signals within a set area. You stay connected as you ...





## [What Is a Base Station? Definition and How It Works](#)

Oct 10, 2025 · Base stations are deployed in various forms, depending on the required coverage area and user density. The most recognizable form is the macro-cell base station, which ...

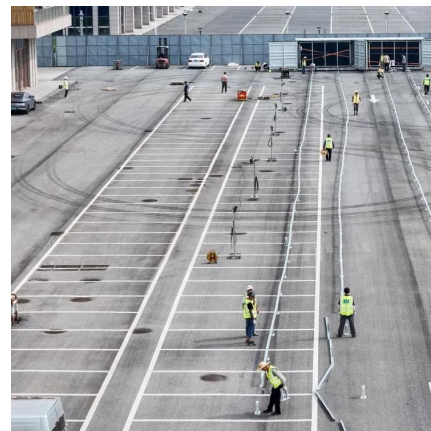


## [1. What Is a Base Station and What Are Its Core Components?](#)

A mobile communication base station is the radio facility that covers a specific area and enables data transmission between mobile phones and the core network. It is the frontline of the entire ...

## [What Is a Base Station? Exploring the Core of 5G Networks ...](#)

Aug 19, 2025 · Base stations are the core of mobile communication, and with the rise of 5G, thermal and energy challenges are increasing. This article explains the definition, structure, ...



## **Base Stations**

Jul 23, 2025 · The present-day tele-space is incomplete without the base stations as these constitute an important part of the modern-day scheme of wireless communications. They are ...



### [What Is A Base Station?](#)

Apr 22, 2024 · A base station is an integral component of wireless communication networks, serving as a central point that manages the transmission and reception of signals between ...



## Contact Us

---

For technical specifications, project proposals, or partnership inquiries, please visit:  
<https://www.eiei.pl>

### Scan QR Code for More Information



<https://www.eiei.pl>