

# When charging an outdoor power source the consumption is fast at the front and slow at the back





## Overview

---

Why does a power station restrict the power consumption?

The power station might restrict the current it consumes to safeguard its internal components even if a charger could theoretically provide larger amps. The capacity of input current directly affects the achievable charging wattage. The connection between charging power and charging duration is straightforward.

What factors affect the duration and price of a charging session?

The following factors impact the duration and price of a charging session: The power accepted by the electric vehicle: it is the vehicle that dictates to the charger the power that it can accommodate in its battery, and not the reverse!.

Do charging stations have different power consumption patterns?

The power consumption patterns of the charging stations normally show insignificant variation across seasons. Only Workplace stations demonstrate a noteworthy discrepancy in power consumption between weekdays and weekends, i.e., a significant decrease on weekends.

What time do independent charging stations peaks?

Nevertheless, Independent stations have multiple charging power peaks at around 7:00 a.m., 4:00p.m., and 12:00 a.m., because these stations are often used by commercial vehicles (e.g., taxis and ride-hailing cars), whose operational cycles usually involve charging before rush hours or at low electricity prices.



## When charging an outdoor power source the consumption is fast at



### [Understanding the charging curve](#)

Dec 3, 2024 · This comparison helps us analyse and understand a charging curve. What is a charging curve? The charging curve, or power curve, shown in graphic form, represents the ...

### **Bringing the Indoors Out: The Ultimate Guide to Outdoor Power and Charging**

Outdoor power and charging solutions have become more versatile and efficient, catering to the needs of a variety of applications and end-users. Learn how to best select the right outdoor ...



### **Solving the Issue of Slow Charging in Portable Power Stations**

Jan 14, 2025 · Portable power stations are increasingly becoming a staple for outdoor enthusiasts, emergency preparedness, and backup power solutions. However, one common complaint ...

### [Bringing the Indoors Out: The Ultimate Guide ...](#)

Outdoor power and charging solutions have become more versatile and efficient, catering to the needs of a variety of applications and end-users. ...



### Pros and Cons of Slow vs. Fast Charging for EV Car Batteries

2 days ago · What is slow charging and fast charging, speed, technical, environmental, coast, and infrastructure differences between both types, overall pros and cons



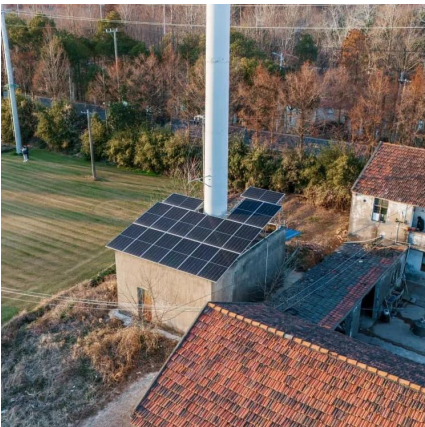
### Understanding EV Charging Speed & Key Influencing Factors

Dec 5, 2025 · Explore how EV charging speed is affected by battery, vehicle, cable, and weather. Learn about charging categories, future trends, and what impacts fast charging.



### Actual electric power consumption distribution of a fast ...

With the rising demand for electric vehicles, the number of electric vehicle charging stations is increasing. Therefore, real-time monitoring of how the power consumption by charging ...





## [How Volts, Amps & Watts Affect Power Station Charging](#)

May 22, 2025 · Understand volts, amps, and watts to optimize charging your portable power station. Learn how input power impacts charging speed and efficiency.



## [Understanding the charging curve](#)

Dec 3, 2024 · This comparison helps us analyse and understand a charging curve. What is a charging curve? The charging curve, or power curve, ...

## [Pros and Cons of Slow vs. Fast Charging for ...](#)

2 days ago · What is slow charging and fast charging, speed, technical, environmental, coast, and infrastructure differences between both types, ...



## [How Fast Charging Works in Modern Power Stations Explained](#)

Jul 21, 2025 · Waiting hours to charge a portable power station can be frustrating, especially when you're in a hurry or off the grid. Many people expect faster charging, but don't know what ...



## [How Volts, Amps & Watts Affect Power ...](#)

May 22, 2025 · Understand volts, amps, and watts to optimize charging your portable power station. Learn how input power impacts charging speed ...

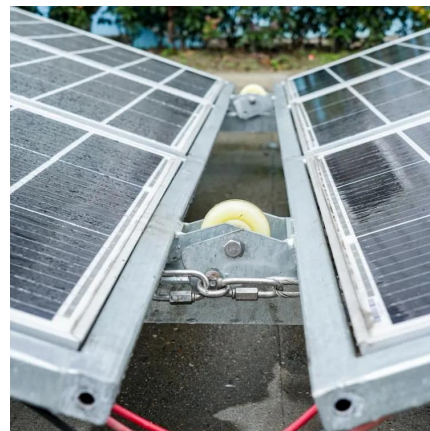


## **Building-related electric vehicle charging behaviors and ...**

Apr 1, 2025 · Understanding electric vehicle (EV) charging behavior and energy consumption patterns is fundamental to support the transportation electrification trend. We analyzed a ...

## **How to Choose the Best Charging Method for an Outdoor Power ...**

Jun 21, 2025 · Match the battery capacity with your equipment's power draw and anticipated outage duration to ensure sufficient backup time. Ensure Multi-Source Input Compatibility The ...



## [How to Choose the Best Charging Method for ...](#)

Jun 21, 2025 · Match the battery capacity with your equipment's power draw and anticipated outage duration to ensure sufficient backup time. Ensure ...



### Actual electric power consumption ...

With the rising demand for electric vehicles, the number of electric vehicle charging stations is increasing. Therefore, real-Time monitoring of how ...



## Contact Us

---

For technical specifications, project proposals, or partnership inquiries, please visit:  
<https://www.eiei.pl>

### Scan QR Code for More Information



<https://www.eiei.pl>