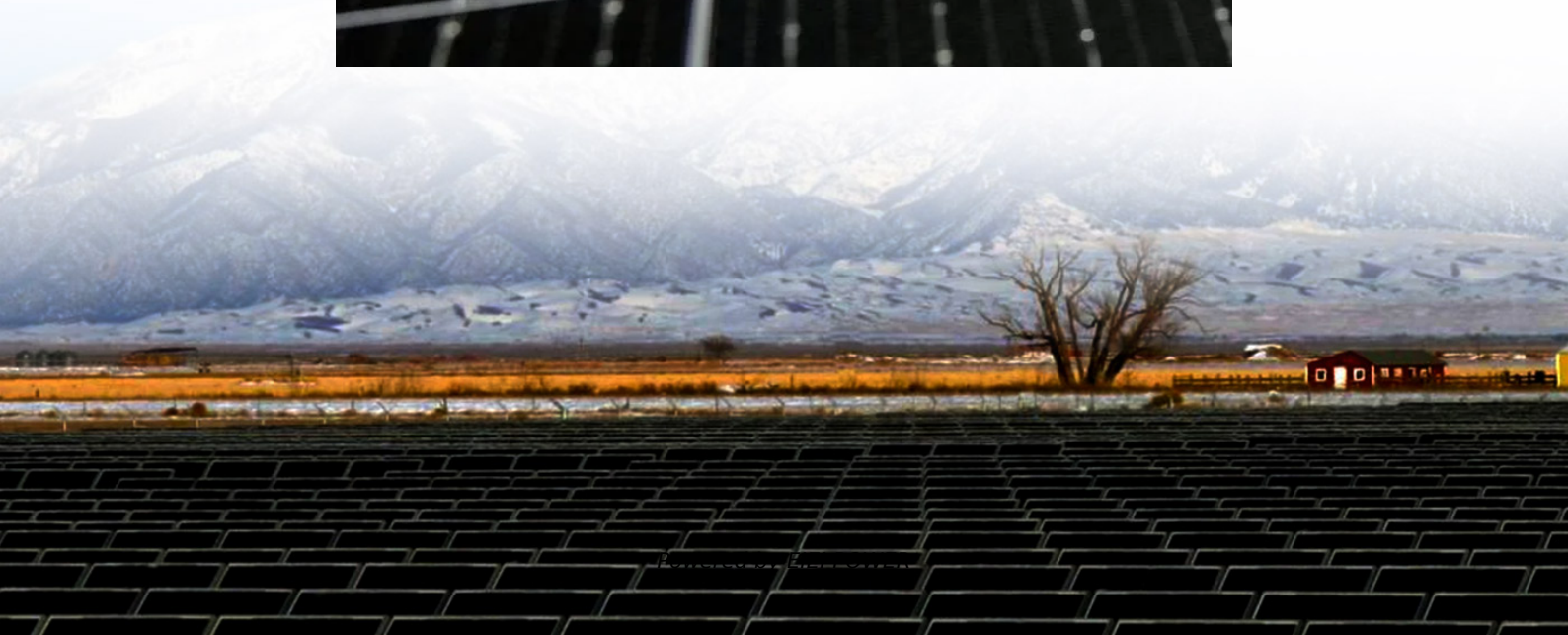


# **What is the end plate inside the battery cabinet called**





## Overview

---

What is a battery holder?

By that, I mean the spring and the little round flat end for the plus and minus ends of the battery. Do they have a name?

I looked up on the Internet, but couldn't find anything. They are called contacts, or alternatively, terminals. A battery holder is a cavity or compartment used to house one or more batteries in a piece of equipment safely.

What is the end of a battery?

The end of a battery is where the flow of electrical energy enters and exits the battery, facilitating the power needed for devices to operate. In this article, we will explore what the end of a battery truly is, specifically focusing on the battery terminals.

What is a battery plate?

Battery plates are the negative and positive electrodes. They contain the active material that stores energy in chemical form. In other words, they are where the electrochemical reaction responsible for charging and discharging occurs. Two plates of opposite polarity form a cell. In turn, several cells combine to make up the entire device.

What is the difference between positive and negative terminals of a battery?

The end of a battery refers to the two electrical contacts located on opposite ends of the battery: the positive and negative terminals. These terminals allow for the connection of the battery to a device or circuit. The positive terminal is the point where electricity leaves the battery, and the negative terminal is where the current returns.



## What is the end plate inside the battery cabinet called

---



### [What is the End of a Battery? Understanding ...](#)

Jan 8, 2025 · Learn about the "end of a battery" - its terminals, their function, and their role in battery performance. A must-read for tech enthusiasts!

### [What are Battery Plates? All You Need to Know](#)

Dec 2, 2024 · This article introduces you to battery plates. Learn what they are, their function, their construction, and how to make them last longer.



### **Battery Structure**

Battery Negative Plate: The negative plate contains a metal grid with spongy lead active material. Battery Separator: The separator is a polyethylene material that separates the positive plates ...

### **word request**

Sep 16, 2019 · What do you call the battery slot's ends? By that, I mean the spring and the little round flat end for the plus and minus ends of the

...



### What is the End of a Battery? Understanding Battery Terminals

Jan 8, 2025 · Learn about the "end of a battery" - its terminals, their function, and their role in battery performance. A must-read for tech enthusiasts!



### Battery Cutaway . What's Inside a Car Battery?

What's Inside a lead acid car battery? Battery Terminal/Bushing: The terminals are connected to the positive strap and the negative strap of the end cells, and are the interfacing point between ...



### What Is the End of a Battery? A Complete Guide to Battery ...

6 days ago · Battery performance, safety, and longevity all depend on a small but essential component: the end of a battery, also known as the battery terminals. While many people ...





**word request**

Sep 16, 2019 · What do you call the battery slot's ends? By that, I mean the spring and the little round flat end for the plus and minus ends of the battery. Do they have a name? I looked up ...

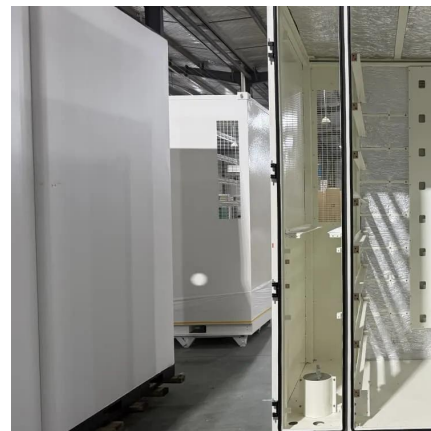


**Parts of a Car Battery Diagram and Their Functions Explained**

Explore the parts of a car battery diagram, including key components and their functions. Understand how each part contributes to battery performance and maintenance.

[The Anatomy of a Battery](#)

Feb 14, 2024 · This is the positive end of the battery, or cathode. The completely flat end of the battery has a minus (-) sign next to it. This is ...



[Understanding Lithium Battery Module End Plate: Key ...](#)

Apr 8, 2025 · Moreover, safety features integrated into lithium battery module end plates are paramount. Many end plates come with built-in safety mechanisms, such as overcurrent ...



## Energy Storage Box End Plates: The Unsung Heroes of Modern Battery

Mar 27, 2025 · Let's start with a riddle: What weighs less than your morning coffee cup but holds together enough energy to power a small neighborhood? Meet the energy storage box end ...



### [The Anatomy of a Battery](#)

Feb 14, 2024 · This is the positive end of the battery, or cathode. The completely flat end of the battery has a minus (-) sign next to it. This is the negative end of a battery, or anode. ...

## Contact Us

---

For technical specifications, project proposals, or partnership inquiries, please visit:  
<https://www.eiei.pl>

**Scan QR Code for More Information**



<https://www.eiei.pl>