

What is the capacity of a 12v inverter





Overview

How much battery does a 12 volt inverter need?

As a rule of thumb, the minimum required battery capacity for a 12-volt system is around 20 % of the inverter capacity. For 24-volt inverters, it is 10 %. The battery capacity for a 12-volt Mass Sine 12/1200, for instance, is 240 Ah, while a 24-volt Mass Sine 24/1500 inverter would require at least 150 Ah.

How much battery does a 24 volt inverter use?

For 24-volt inverters, it is 10 %. The battery capacity for a 12-volt Mass Sine 12/1200, for instance, is 240 Ah, while a 24-volt Mass Sine 24/1500 inverter would require at least 150 Ah. The indicated battery capacity is only for the inverter. The capacity required for other loads should be added to it. How much power does an inverter consume?

.

What is the recommended battery size for an inverter?

Interpreting Results: Once you input the required data, the calculator will generate the recommended battery size in ampere-hours (Ah). For instance, if your power consumption is 500 watts, the usage time is 4 hours, and the inverter efficiency is 90%, the calculator might suggest a battery size of approximately 222 Ah.

What size inverter for a 12V 200Ah battery?

For a 12V 200Ah battery (2.4kWh), a 2000W inverter is ideal. Formula: $\text{Inverter Wattage} \leq (\text{Battery Voltage} \times \text{Ah Rating} \times 0.8)$. Factor in surge power needs but prioritize sustained loads. Always check the battery's max discharge rate (C-rate) to avoid exceeding safe limits. When sizing for 24V or 48V systems, recalculate using the higher voltage.



What is the capacity of a 12v inverter



[Inverter Capacity Calculator](#)

Nov 28, 2025 · The inverter capacity calculator calculates how much power your devices need and what battery size is required for a stable backup.

Can One 12V Battery Handle A 1000W Inverter? Explore Capacity ...

Apr 9, 2025 · Yes, a 12V battery can power a 1000W inverter, but it depends on the inverter's efficiency and the battery's capacity. For example, a 36Ah battery can theoretically supply ...



[Can an Inverter Be Too Big for Your Battery System?](#)

How to Calculate the Right Inverter Size for Your Battery Match the inverter's continuous wattage rating to the battery's discharge capacity. For a 12V 200Ah battery (2.4kWh), a 2000W inverter ...



[Inverter Size Calculator](#)

Choosing the wrong inverter size can lead to overloads, inefficiency, or even system failure. That's where our Inverter Size Calculator comes in -- a simple, efficient, and highly accurate tool that ...



[What Is A 12V Inverter And Where Is It Used?](#)

What defines a 12V inverter system? A 12V inverter system centers on converting DC to AC power using a 12V battery source. It includes components like MOSFET transistors, ...



[What is the size of an Inverter 220V TO 12V?](#)

As a supplier of 220V to 12V inverters, I often get asked about the size of these nifty devices. In this blog, I'm gonna break down everything you need to know about the size of a 220V to 12V ...



[Calculate Battery Size for Inverter Calculator](#)

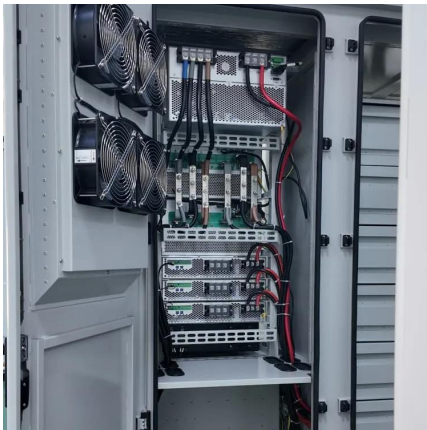
Mar 14, 2025 · The Calculate Battery Size for Inverter Calculator helps you determine the optimal battery capacity needed to support your inverter ...





[Calculate Battery Size for Inverter Calculator](#)

Mar 14, 2025 · The Calculate Battery Size for Inverter Calculator helps you determine the optimal battery capacity needed to support your inverter system. By inputting critical parameters such ...

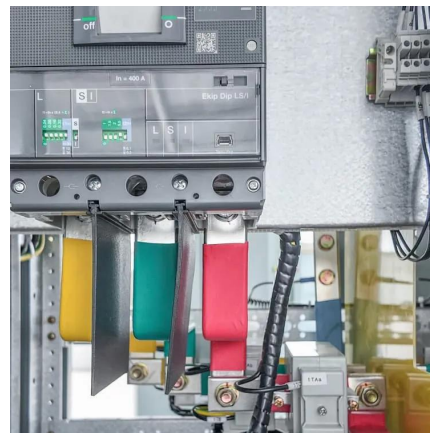


[Frequently Asked Questions about Inverters](#)

Frequently Asked Questions about Inverters How much battery capacity do I need with an inverter? As a rule of thumb, the minimum required battery capacity for a 12-volt system is ...

[How Much Battery Capacity Do You Need With a 12V Inverter?](#)

Jun 14, 2025 · Discover how to calculate the ideal battery capacity for a 12V inverter using simple math, practical examples, and money-saving tips for daily power.



[The Only Inverter Size Chart You'll Ever Need](#)

Sep 25, 2023 · We have created a comprehensive inverter size chart to help you select the correct inverter to power your appliances.



What is the size of an Inverter 220V TO 12V?

As a supplier of 220V to 12V inverters, I often get asked about the size of these nifty devices. In this blog, I'm gonna break down everything you

...



Contact Us

For technical specifications, project proposals, or partnership inquiries, please visit:
<https://www.eiei.pl>

Scan QR Code for More Information



<https://www.eiei.pl>