

# What is the battery value of a base station outdoors





## Overview

---

How do I choose a base station?

**Key Factors:** **Power Consumption:** Determine the base station's load (in watts). **Backup Duration:** Identify the required backup time (hours). **Battery Voltage:** Select the correct voltage based on system design. **Efficiency & Discharge Rate:** Consider battery efficiency and discharge characteristics.

Which battery is best for telecom base station backup power?

Among various battery technologies, Lithium Iron Phosphate (LiFePO<sub>4</sub>) batteries stand out as the ideal choice for telecom base station backup power due to their high safety, long lifespan, and excellent thermal stability.

What makes a telecom battery pack compatible with a base station?

**Compatibility and Installation Voltage Compatibility:** 48V is the standard voltage for telecom base stations, so the battery pack's output voltage must align with base station equipment requirements. **Modular Design:** A modular structure simplifies installation, maintenance, and scalability.

What is a wide temperature range LiFePO<sub>4</sub> battery?

This translates to lower replacement frequency and maintenance costs. Wide Temperature Range LiFePO<sub>4</sub> batteries operate reliably in temperatures ranging from -20°C to 60°C, making them suitable for the diverse and often extreme environments of telecom base stations.



## What is the battery value of a base station outdoors

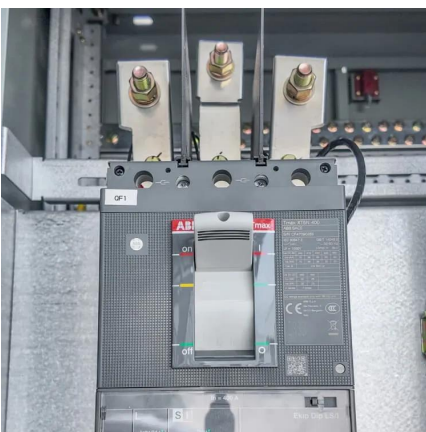


### [What Size Battery for Base Station? Huijue Group E-Site](#)

The \$4.7 Billion Question Haunting Telecom Engineers When designing base station power systems, engineers face a critical dilemma: How do we balance battery capacity with ...

### [Choosing the Right Battery for Base Stations: LiFePO4 vs.](#)

LiFePO4 batteries and lead-acid batteries are used in base stations, mainly considering that different discharge rates have less influence on the discharge capacity of such batteries, and ...



### [How to Determine the Right Battery Capacity ...](#)

Mar 10, 2025 · Example: If a base station consumes 500W and needs 4 hours of backup at 48V, the required capacity is:  
 $500W \times 4h / 48V = 41.67Ah$  ...

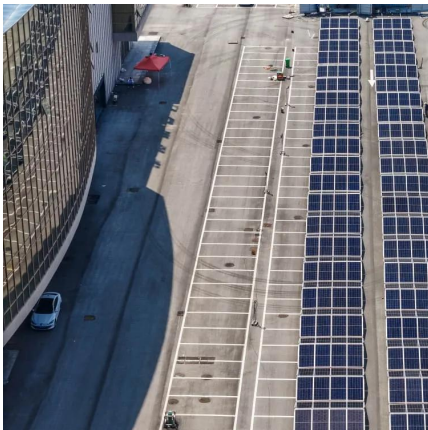
### [Base Station Energy Storage](#)

A base station energy storage system is a compact, modular battery solution designed to ensure uninterrupted power supply for telecom base stations. It supports stable operations during grid ...



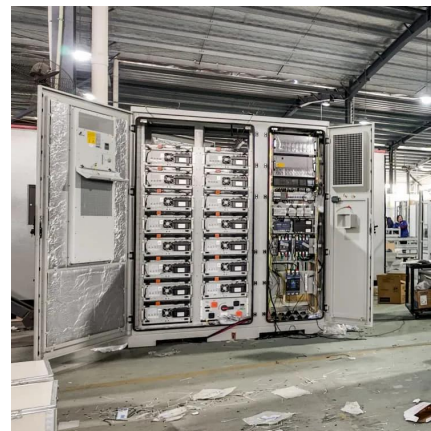
## How to Determine the Right Battery Capacity for Telecom Base Stations

Mar 10, 2025 · Example: If a base station consumes 500W and needs 4 hours of backup at 48V, the required capacity is:  
 $500W \times 4h / 48V = 41.67Ah$  Choosing a battery with a slightly higher ...



## How much energy storage battery is used in base stations?

Aug 25, 2024 · Therefore, while evaluating battery costs, it is invaluable to consider the full lifecycle expenses and overall effectiveness of the chosen technology to make a prudent ...



## Ultimate Guide to Base Station Power Selection: Lithium vs.

Nov 17, 2025 · With the large-scale rollout of 5G networks and the rapid deployment of edge-computing base stations, the core requirements for base station power systems--stability, cost ...





## [Which Battery Is Best for Outdoor Power Stations?](#)

When selecting a battery for outdoor power stations, it's essential to understand that the battery is the core factor that determines the unit's performance. Whether for camping, hiking, or ...



## [Mobile Energy Storage Battery: The Ultimate Guide](#)

6 days ago · A mobile energy storage battery, often called a portable power station, is a self-contained device that stores electrical energy for later use. Think of it as a much larger, more ...

## [Telecom Base Station Backup Power Solution: Design Guide ...](#)

Jun 5, 2025 · Discover the 48V 100Ah LiFePO4 battery pack for telecom base stations: safe, long-lasting, and eco-friendly. Optimize reliability with our design guide.



## **How to Select the Best ESTEL Battery Backup for Base Stations**

May 29, 2025 · Choose the best telecom battery backup systems by evaluating capacity, battery type, environmental adaptability, maintenance, and scalability for base stations.



## [Telecom Base Station Backup Power Solution: ...](#)

Jun 5, 2025 · Discover the 48V 100Ah LiFePO4 battery pack for telecom base stations: safe, long-lasting, and eco-friendly. Optimize reliability with ...



## Contact Us

---

For technical specifications, project proposals, or partnership inquiries, please visit:  
<https://www.eiei.pl>

## Scan QR Code for More Information



<https://www.eiei.pl>