

What is the battery connected to the base station





Overview

How many batteries does the base station take?

The Base Station takes four (4) 1.2V, 1300mAh nickel-metal hydride (NiMH) rechargeable batteries. Regular alkaline batteries should never be inserted into the Base Station, as they may damage the device. Once you have acquired the necessary NiMH rechargeable batteries, you can follow the steps below to replace them:.

Where do batteries go in a substation?

In large substations, the batteries may be out in the middle of the floor with the pan protruding all the way around the battery rack. Erroneously, the measurements for the required working space about the batteries are many times taken from the terminals of the batteries.

Which battery is best for telecom base station backup power?

Among various battery technologies, Lithium Iron Phosphate (LiFePO₄) batteries stand out as the ideal choice for telecom base station backup power due to their high safety, long lifespan, and excellent thermal stability.

What makes a telecom battery pack compatible with a base station?

Compatibility and Installation Voltage Compatibility: 48V is the standard voltage for telecom base stations, so the battery pack's output voltage must align with base station equipment requirements. Modular Design: A modular structure simplifies installation, maintenance, and scalability.



What is the battery connected to the base station



[Overview of Telecom Base Station Batteries](#)

Definition Telecom base station battery is a kind of energy storage equipment dedicatedly designed to provide backup power for telecom base stations, ...

[How about base station energy storage ...](#)

Apr 7, 2024 · This section delves into the different types of batteries commonly used in base station energy storage and evaluates their ...



[Telecom Base Station Backup Power Solution: Design Guide ...](#)

Jun 5, 2025 · Discover the 48V 100Ah LiFePO4 battery pack for telecom base stations: safe, long-lasting, and eco-friendly. Optimize reliability with our design guide.

[Telecom Base Station Backup Power Solution: ...](#)

Jun 5, 2025 · Discover the 48V 100Ah LiFePO4 battery pack for telecom base stations: safe, long-lasting, and eco-friendly. Optimize reliability with ...



[How about base station energy storage batteries _NenPower](#)

Apr 7, 2024 · This section delves into the different types of batteries commonly used in base station energy storage and evaluates their respective strengths and weaknesses. Lithium-ion ...



[Communication Base Station Lead-Acid Battery: Powering...](#)

In an era where lithium-ion dominates headlines, communication base station lead-acid batteries still power 68% of global telecom towers. But how long can this 150-year-old technology ...



[Overview of Telecom Base Station Batteries](#)

Definition Telecom base station battery is a kind of energy storage equipment dedicatedly designed to provide backup power for telecom base stations, applied to supply continuous and ...





[Ultimate Guide to Base Station Power Selection: Lithium vs.](#)

Nov 17, 2025 · With the large-scale rollout of 5G networks and the rapid deployment of edge-computing base stations, the core requirements for base station power systems --stability, ...



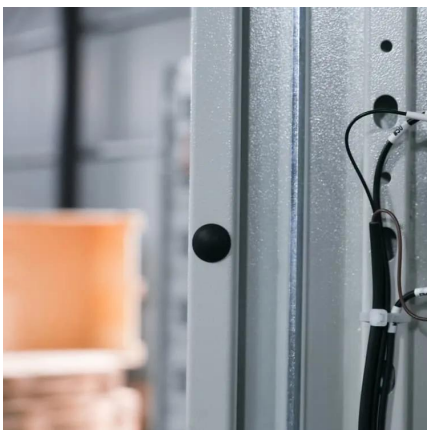
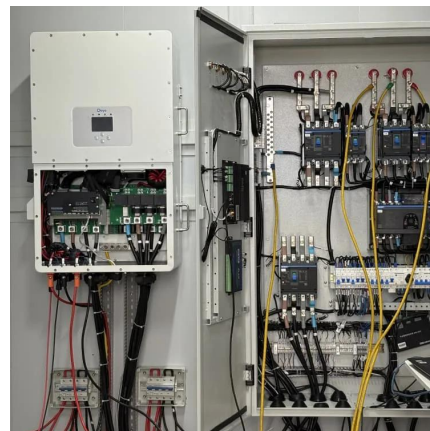
[What is the purpose of batteries at telecom base stations?](#)

Nov 7, 2025 · Among the many types of batteries, why can lead-acid batteries become the first choice for telecom base stations? This is mainly due to its following advantages: High ...



[Basic components of a 5G base station](#)

Download scientific diagram , Basic components of a 5G base station from publication: Evaluating the Dispatchable Capacity of Base Station Backup ...



[What is the purpose of batteries at telecom ...](#)

Nov 7, 2025 · Among the many types of batteries, why can lead-acid batteries become the first choice for telecom base stations? This is mainly ...



How much energy storage battery is used in base stations?

Aug 25, 2024 · These batteries enable base stations to operate efficiently, particularly when coupled with solar or wind energy systems. As the demand for connectivity rises, the efficiency ...



48V lifepo4 lithium battery ...

Nov 30, 2025 · At the forefront of this transformation stands the 48V LiFePO4 battery, a game-changing powerhouse that's redefining how we empower ...



Basic components of a 5G base station

Download scientific diagram , Basic components of a 5G base station from publication: Evaluating the Dispatchable Capacity of Base Station Backup Batteries in Distribution Networks , Cellular ...



48V lifepo4 lithium battery telecommunication base stations ...

Nov 30, 2025 · At the forefront of this transformation stands the 48V LiFePO4 battery, a game-changing powerhouse that's redefining how we empower telecommunication base stations ...





What Are the Key Considerations for Telecom Batteries in Base Stations?

Telecom batteries for base stations are backup power systems that ensure uninterrupted connectivity during grid outages. Typically using valve-regulated lead-acid (VRLA) or lithium ...



Contact Us

For technical specifications, project proposals, or partnership inquiries, please visit:
<https://www.eiei.pl>

Scan QR Code for More Information



<https://www.eiei.pl>