

What is in the middle of a solar panel





Overview

What are the components of a solar panel?

Understanding the components of a solar panel empowers informed decision-making when selecting photovoltaic systems. Each component—from photovoltaic cells and protective glass to frames and junction boxes—contributes to overall system performance, reliability, and longevity. Key considerations for component selection include:

What is a solar panel mounting structure?

Within the components that make up a photovoltaic system, the structures of the photovoltaic panels are passive components that facilitate the installation of the solar PV modules. Solar mounting structures must constantly withstand outdoor weather conditions. The solar panel mounting structure fixes its position and stays stable for years.

What is the top layer of a solar panel?

The top layer of most solar panels is a sheet of tempered glass, which accounts for nearly three-quarters of a crystalline panel's total weight. As the panel's first line of defense, this layer protects the sensitive solar cells underneath weather and debris.

What does a solar panel look like?

From the outside, a solar panel looks like a simple sheet of glass in a metal frame. But that sleek exterior hides a sophisticated, multi-layered system where every single part has a critical job to do. Think of it as a high-tech sandwich, with each layer working together to catch sunlight and turn it into clean electricity for your home.

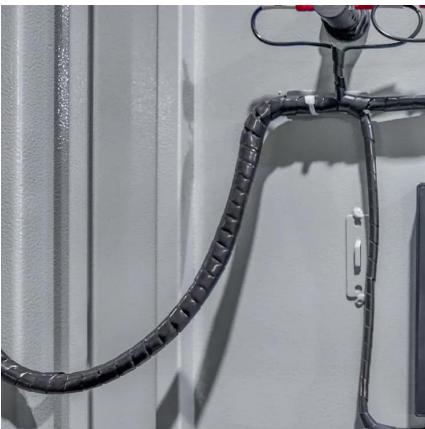


What is in the middle of a solar panel



[Solar Power Information and Facts , National ...](#)

Jan 12, 2023 · Many are familiar with so-called photovoltaic cells, or solar panels, found on things like spacecraft, rooftops, and handheld calculators.



[What Are the Essential Parts of a Solar Panel](#)

Jun 3, 2025 · Discover the essential parts of a solar panel, including solar cells, glass, backsheets, frames, and junction boxes, and their role in energy efficiency.

[Improving Panel Efficiency: Solar Cell Busbars ...](#)

Enhance solar panel performance with solar cell busbars and fingers. Explore advantages and tips to maximize your energy harvest.



[Solar Panel Components \(List and Functions\)](#)

May 8, 2022 · Solar panels are becoming our solution to the energy crisis that we face, but what parts make up a solar panel and system - that's ...



[What Are The Main Components of Solar Panels?](#)

Dec 29, 2023 · Solar Panel Encapsulation Film Encapsulation films, also known as solar panel encapsulants, are essential components in solar panels. Positioned between the front glass ...



[What's Inside A Solar Panel?](#)

Oct 25, 2024 · What materials are inside solar panels? Learn about monocrystalline and polycrystalline solar cells, thin-film solar, and bifacial panels.



[The Ultimate Guide to Solar Panel Mounting ...](#)

Jun 9, 2025 · The primary difference lies in where they are used on the solar mounting rails. A mid clamp, often called a middle clamp or solar mid ...





The Hidden Backbone of Solar Power: Exploring Solar Panel ...

Discover the poetic structure behind solar energy--from mounts to rails, frames to fasteners--with this complete guide to solar panel structure components.



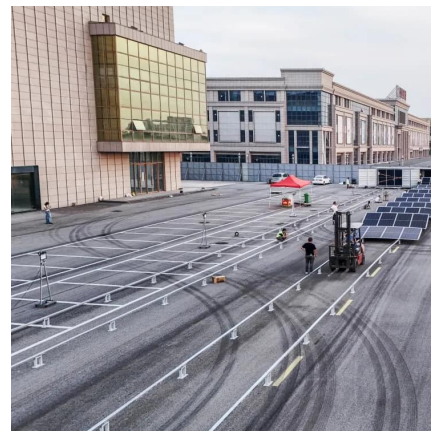
[Solar Panel Components Guide , Orlando FL , Radiant Energy](#)

Aug 20, 2025 · Solar panel components explained. Complete guide on cells, inverters, and structure. Professional installation in Orlando, FL. Free consultation.



Is It Possible to Install Glass in the Middle of a Photovoltaic Panel

Light Transmission: Glass in the middle would scatter sunlight before it hits the cells, like putting foggy goggles on a racecar driver. Heat Management: Solar panels already battle heat ...



[Solar Panel Components Guide , Orlando FL](#)

Aug 20, 2025 · Solar panel components explained. Complete guide on cells, inverters, and structure. Professional installation in Orlando, FL. Free ...





[Comprehensive Guide to Solar Panel Types](#)

2 days ago · The entire process is called the photovoltaic effect, which is why solar panels are also known as photovoltaic panels or PV panels. A ...



[Solar panel components, the structure of PV panels](#)

Feb 25, 2016 · 7. Solar panel stand Within the components that make up a photovoltaic system, the structures of the photovoltaic panels are passive components that facilitate the installation ...

[What does a solar panel look like inside?](#)

Sep 14, 2024 · Inside a solar panel, the central components include photovoltaic cells, a backing material, and glass or polymers, which ...



[What Is a Mid Clamp in Solar?](#)

Jan 2, 2025 · Securing solar panels within a photovoltaic (PV) system is a task that mid clamps excel at. These clamps are tailor-made to join ...



[Junction Box for Solar Panel: Definition, How ...](#)

Aug 27, 2024 · What is a Junction Box for solar panels? Why is it important? Combiner Boxes, Pass-Through Boxes, and Half-Cut Cell Junction Boxes ...



[Solar panel components: A complete guide to ...](#)

Aug 27, 2025 · Explore solar panel components, from cells to inverters, and how they work together to power your home.

[The Hidden Backbone of Solar Power: ...](#)

Discover the poetic structure behind solar energy--from mounts to rails, frames to fasteners--with this complete guide to solar panel structure ...



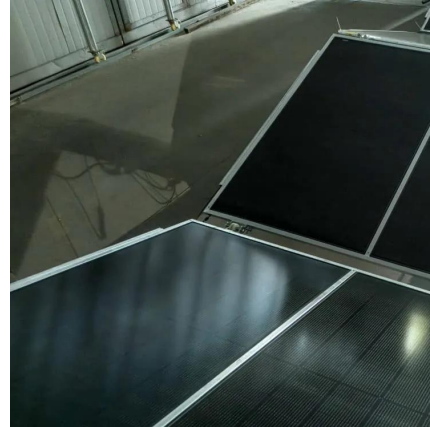
[Components of a Solar Panel: Complete ...](#)

Aug 25, 2025 · Discover the 7 essential components of solar panels, how they work together, and what to look for when choosing quality panels. ...



[What's Inside A Solar Panel?](#)

Oct 25, 2024 · What materials are inside solar panels? Learn about monocrystalline and polycrystalline solar cells, thin-film ...



[Components of a Solar Panel: Complete Technical Guide](#)

Aug 25, 2025 · Discover the 7 essential components of solar panels, how they work together, and what to look for when choosing quality panels. Expert guide with testing data.

[What to know about mid clamps and end ...](#)

Jan 23, 2023 · Mid and end clamps are two of the most critical components that secure PV modules to the racking system. Here to explain what they ...



[What is Solar Panel Size and Why Does it ...](#)

Apr 24, 2024 · When considering which solar panels to choose for your installation, solar panel size is something to bear in mind. Solar panels ...



[What does a solar panel look like inside? .
NenPower](#)

Sep 14, 2024 · Inside a solar panel, the central components include photovoltaic cells, a backing material, and glass or polymers, which protect and optimize functionality. 2.

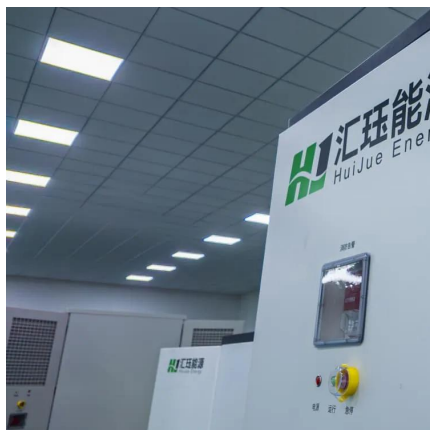


[Solar panel components, the structure of PV ...](#)

Feb 25, 2016 · 7. Solar panel stand Within the components that make up a photovoltaic system, the structures of the photovoltaic panels are passive ...

[PV Junction Box: purpose and connection](#)

Oct 9, 2011 · A photovoltaic (PV) junction box is an important part of the solar panels. The junction box is an enclosure on the module where the PV ...



[Solar panel components: A complete guide to every part](#)

Aug 27, 2025 · Explore solar panel components, from cells to inverters, and how they work together to power your home.



[The Anatomy of A Solar Panel , edp](#)

May 3, 2022 · Different Types of Solar Panels - Materials and Appearances In Singapore today, there are three main types of solar panels available in the market - monocrystalline, ...



Contact Us

For technical specifications, project proposals, or partnership inquiries, please visit:
<https://www.eiei.pl>

Scan QR Code for More Information



<https://www.eiei.pl>