

What is flywheel energy storage





Overview

What is a flywheel energy storage system (fess)?

Flywheel energy storage systems (FESS) use electric energy input which is stored in the form of kinetic energy. Kinetic energy can be described as “energy of motion,” in this case the motion of a spinning mass, called a rotor. The rotor spins in a nearly frictionless enclosure.

What is flywheel energy storage?

Flywheel energy storage is defined as a method for storing electricity in the form of kinetic energy by spinning a flywheel at high speeds, which is facilitated by magnetic levitation in an evacuated chamber. This technology allows for efficient energy storage and retrieval, with a roundtrip efficiency of about 90%. How useful is this definition?

.

What is flywheel technology?

We will explore its advantages, applications across various industries, and a comparative analysis with other storage methods. Flywheel technology is a sophisticated energy storage system that uses a spinning wheel to store mechanical energy as rotational energy. This system ensures high energy output and efficient recovery.

What is the difference between a flywheel and a battery storage system?

Flywheel Systems are more suited for applications that require rapid energy bursts, such as power grid stabilization, frequency regulation, and backup power for critical infrastructure. Battery Storage is typically a better choice for long-term energy storage, such as for renewable energy systems (solar or wind) or home energy storage.



What is flywheel energy storage



[What is a Flywheel Storage System? High-Speed Energy ...](#)

Jun 26, 2025 · Conclusion Flywheel storage systems represent a high-speed, efficient, and environmentally friendly energy storage solution. Their unique characteristics make them well ...

[Flywheel Energy Storage: A High-Efficiency Solution](#)

Mar 26, 2025 · Flywheel energy storage is an exciting solution for efficient and sustainable energy management. This innovative technology offers high efficiency and substantial environmental ...



[Flywheel Energy Storage: A High-Efficiency Solution](#)

Mar 26, 2025 · Flywheel energy storage is an exciting solution for efficient and sustainable energy management. This innovative ...



[Technology: Flywheel Energy Storage](#)

Oct 30, 2024 · Summary of the storage process Flywheel Energy Storage Systems (FESS) rely on a mechanical working principle: An electric motor is used to spin a rotor of high inertia up to ...



Flywheel Energy Storage: Alternative to Battery Storage

Oct 5, 2024 · As the energy grid evolves, storage solutions that can efficiently balance the generation and demand of renewable energy sources are critical. Flywheel energy storage ...



Flywheel Energy Storage System Basics

Aug 13, 2025 · A flywheel energy storage system is therefore functionally similar to a hydro power station, that stores gravitational energy in water. ...



Flywheel Energy Storage

2.4 Flywheel energy storage Flywheel energy storage, also known as kinetic energy storage, is a form of mechanical energy storage that is a suitable to achieve the smooth operation of ...





[Flywheel Energy Storage -> Term](#)

Dec 1, 2025 · Flywheel Energy Storage Meaning -> A Flywheel Energy Storage system is a mechanical device that stores electricity as kinetic ...

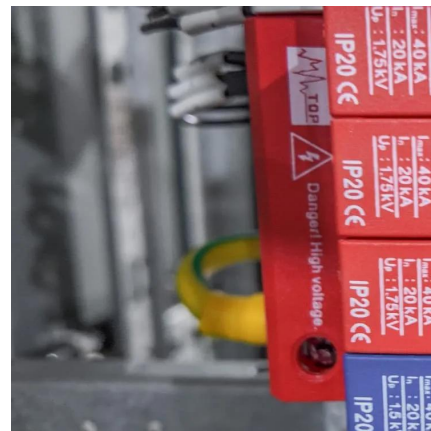


[Flywheel Energy Storage: A Comprehensive Guide](#)

Jun 11, 2025 · Discover the benefits and applications of flywheel energy storage in modern energy systems, including its role in grid stabilization and renewable energy integration.

[Flywheel Energy Storage Systems \(FESS\)](#)

Flywheel energy storage systems (FESS) use electric energy input which is stored in the form of kinetic energy. Kinetic energy can be described as ...



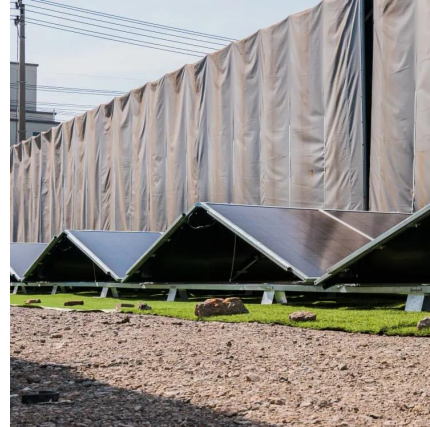
[Flywheel Energy Storage -> Term](#)

Dec 1, 2025 · Flywheel Energy Storage Meaning -> A Flywheel Energy Storage system is a mechanical device that stores electricity as kinetic energy in a rapidly spinning rotor for fast ...



Flywheel Energy Storage System: What Is It ...

What Is a Flywheel Energy Storage System? A flywheel energy storage system is a mechanical device used to store energy through rotational ...



Flywheel Energy Storage System Basics

Aug 13, 2025 · A flywheel energy storage system is therefore functionally similar to a hydro power station, that stores gravitational energy in water. In that instance, an electric motor pumps ...

Flywheel Energy Storage System: What Is It and How Does It ...

What Is a Flywheel Energy Storage System? A flywheel energy storage system is a mechanical device used to store energy through rotational motion. When excess electricity is available, it ...



Flywheel Energy Storage: Alternative to ...

Oct 5, 2024 · As the energy grid evolves, storage solutions that can efficiently balance the generation and demand of renewable energy sources are ...



Flywheel Energy Storage Systems (FESS)

Flywheel energy storage systems (FESS) use electric energy input which is stored in the form of kinetic energy. Kinetic energy can be described as "energy of motion," in this case the motion ...



Contact Us

For technical specifications, project proposals, or partnership inquiries, please visit:
<https://www.eiei.pl>

Scan QR Code for More Information



<https://www.eiei.pl>