

What equipment does flywheel energy storage consist of





Overview

How does a flywheel energy storage system work?

Flywheel Energy Storage Systems (FESS) rely on a mechanical working principle: An electric motor is used to spin a rotor of high inertia up to 20,000-50,000 rpm. Electrical energy is thus converted to kinetic energy for storage. For discharging, the motor acts as a generator, braking the rotor to produce electricity.

What is a flywheel energy storage system (fess)?

Flywheel energy storage systems (FESS) use electric energy input which is stored in the form of kinetic energy. Kinetic energy can be described as “energy of motion,” in this case the motion of a spinning mass, called a rotor. The rotor spins in a nearly frictionless enclosure.

Can a flywheel energy storage system maintain power grid frequency?

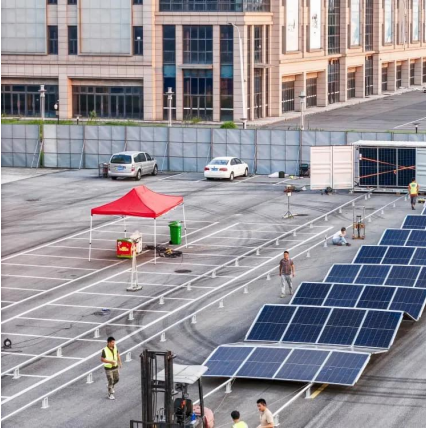
Several innovative power utilities already use flywheel storage systems to maintain power grid frequency. Renewable energy is knocking on flywheel energy’s door. The system can respond instantly, unlike battery storage. However on the downside, flywheel energy storage systems have low energy storage density per unit of weight and volume.

Do power utilities need a flywheel storage system?

Power utilities need innovative ways to store renewable wind and solar energy, during low demand periods, so they can release it after sunset when demand is high. Several innovative power utilities already use flywheel storage systems to maintain power grid frequency. Renewable energy is knocking on flywheel energy’s door.



What equipment does flywheel energy storage consist of



[Flywheel Energy Storage Systems and their Applications: ...](#)

Oct 19, 2024 · Flywheel energy storage systems are suitable and economical when frequent charge and discharge cycles are required. Furthermore, flywheel batteries have high power ...

[What are the flywheel energy storage ...](#)

Aug 19, 2024 · Flywheel energy storage equipment represents a transformative approach to energy management, offering both ...

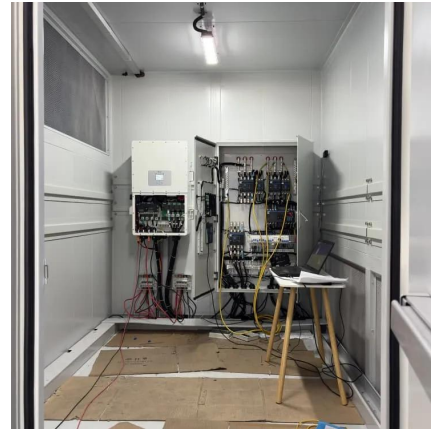


[Flywheel Energy Storage Systems \(FESS\)](#)

Most modern high-speed flywheel energy storage systems consist of a massive rotating cylinder (a rim attached to a shaft) that is supported on a ...

[Flywheel Energy Storage: A Comprehensive Guide](#)

Jun 11, 2025 · Discover the benefits and applications of flywheel energy storage in modern energy systems, including its role in grid stabilization and renewable energy integration.



[Flywheel Energy Storage System Basics](#)

Aug 13, 2025 · The system can respond instantly, unlike battery storage. However on the downside, flywheel energy storage systems have low energy storage density per unit of weight ...



[Flywheel Energy Storage System , SpringerLink](#)

Sep 4, 2025 · Flywheel energy storage stores electrical energy in the form of mechanical energy in a high-speed rotating rotor. The core technology is the rotor material, support bearing, and ...



[Flywheel Energy Storage System Basics](#)

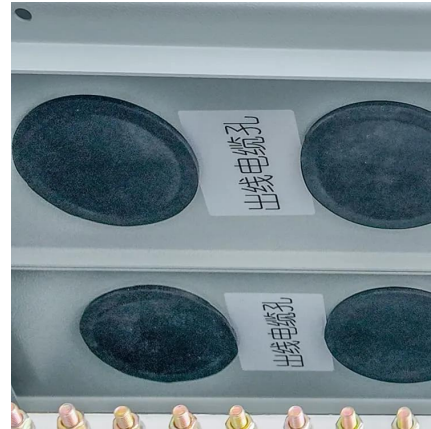
Aug 13, 2025 · The system can respond instantly, unlike battery storage. However on the downside, flywheel energy storage systems have low ...





[Flywheel Energy Storage -> Term](#)

Dec 1, 2025 · Flywheel Energy Storage Meaning
-> A Flywheel Energy Storage system is a mechanical device that stores electricity as kinetic ...



[Flywheel Energy Storage -> Term](#)

Dec 1, 2025 · Flywheel Energy Storage Meaning
-> A Flywheel Energy Storage system is a mechanical device that stores electricity as kinetic energy in a rapidly spinning rotor for fast ...

[Flywheels , Climate Technology Centre](#)

Dec 5, 2025 · Components of a flywheel energy storage system A flywheel has several critical components. a) Rotor - a spinning mass that stores ...



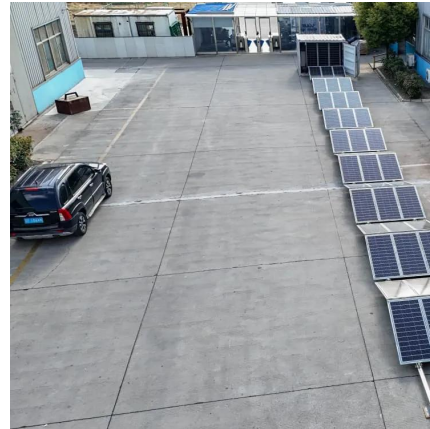
[What are the flywheel energy storage equipment? , NenPower](#)

Aug 19, 2024 · Flywheel energy storage equipment represents a transformative approach to energy management, offering both environmental and operational benefits. Their unique ...



Flywheel Energy Storage Systems (FESS)

Most modern high-speed flywheel energy storage systems consist of a massive rotating cylinder (a rim attached to a shaft) that is supported on a stator - the stationary part of an electric ...



Flywheels , Climate Technology Centre & Network , 1182179

Dec 5, 2025 · Components of a flywheel energy storage system A flywheel has several critical components. a) Rotor - a spinning mass that stores energy in the form of momentum (EPRI, ...

Technology: Flywheel Energy Storage

Oct 30, 2024 · Summary of the storage process Flywheel Energy Storage Systems (FESS) rely on a mechanical working principle: An electric motor is used to spin a rotor of high inertia up to ...



Flywheel Energy Storage System

Flywheel Energy Storage Systems (FESS) are defined as systems that store energy by spinning a rotor at high speeds, converting the rotor's rotational energy into electricity. They utilize a high ...



Contact Us

For technical specifications, project proposals, or partnership inquiries, please visit:
<https://www.eiei.pl>

Scan QR Code for More Information



<https://www.eiei.pl>