

# What does inverter grid connection mean





## Overview

---

What is an on grid solar inverter?

An on grid solar inverter is a key component in solar power systems that are connected to the main power grid. Its primary function is to convert the direct current (DC) electricity generated by solar panels into alternating current (AC) electricity, which is compatible with the utility grid.

How does a grid-tie inverter work?

A grid-tie inverter connects your solar system to the electricity grid, allowing you to use solar power while sending excess energy back to the grid, often earning credits or money. A grid-tie inverter converts direct current (DC) power from solar panels into alternating current (AC) power that can be used in your home or fed into the grid.

How do inverters provide grid services?

In order to provide grid services, inverters need to have sources of power that they can control. This could be either generation, such as a solar panel that is currently producing electricity, or storage, like a battery system that can be used to provide power that was previously stored.

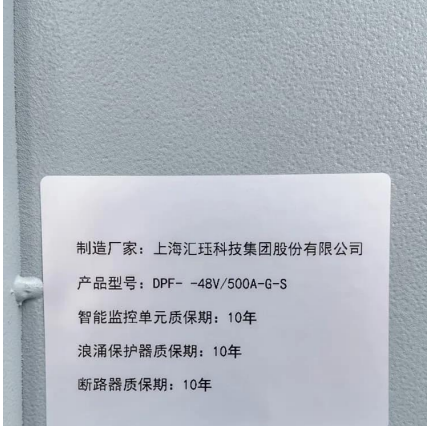
What is a grid-tied PV inverter?

Grid-tied PV inverters perform an additional task in addition to converting solar energy from AC to DC making them best for solar panels. It analyzes energy flows in real time to decide whether solar energy should be used domestically or exported. It synchronizes the output voltage and frequency well with the connected grid.



## What does inverter grid connection mean

---



### [Does a grid-connected inverter need a grid to operate?](#)

Sep 24, 2024 · Discover why grid-connected inverters must sync with the grid to operate. Learn how they convert DC to AC, rely on grid frequency/voltage references, and use islanding ...

### [What Is The Difference Between Grid-Tied ...](#)

Jun 20, 2025 · Grid-tied inverters are essential components of solar power systems that connect directly to the utility grid. Unlike off-grid inverters ...



### [Solar Integration: Inverters and Grid Services ...](#)

2 days ago · More advanced grid-forming inverters can generate the signal themselves. For instance, a network of small solar panels might designate ...

## What Is The Difference Between Grid-Tied And Grid Interactive Inverters?

Jun 20, 2025 · Grid-tied inverters are essential components of solar power systems that connect directly to the utility grid. Unlike off-grid



inverters that rely on battery storage, grid-tied inverters ...



## What is an On Grid Solar Inverter? Definition, Components, ...

Jan 19, 2025 · An on grid solar inverter is a key component in solar power systems that are connected to the main power grid. Its primary function is to convert the direct current (DC) ...

## [What Is a Grid Tie Inverter? See Why Experts ...](#)

Jul 9, 2025 · A grid-tie inverter, also known as a grid-connected inverter, is a device that allows your solar energy system to work in tandem with the ...



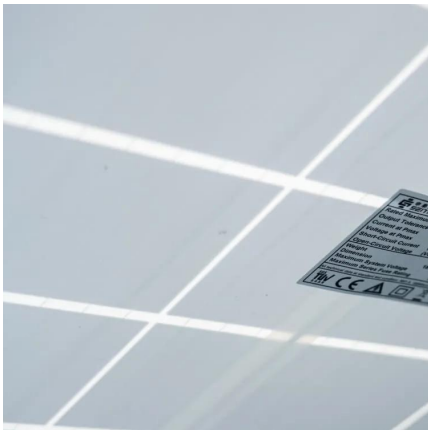
## [What is a Grid-Tied Inverter?](#)

Nov 17, 2023 · Grid Assistance - A two-way connection to the electrical grid is made possible by the grid-tied solar inverter. The inverter will pull ...



## [What is a Grid-Tied Inverter?](#)

Nov 17, 2023 · Grid Assistance - A two-way connection to the electrical grid is made possible by the grid-tied solar inverter. The inverter will pull energy as needed and feed any excess energy ...

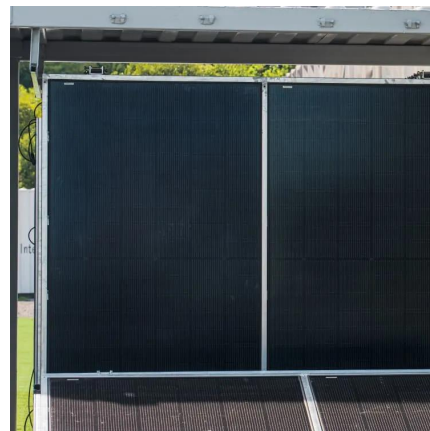


## [Solar Integration: Inverters and Grid Services Basics](#)

2 days ago · More advanced grid-forming inverters can generate the signal themselves. For instance, a network of small solar panels might designate one of its inverters to operate in grid ...

## [What is On Grid Inverter? , inverter](#)

Dec 18, 2023 · On-grid: connect the output power of the on grid inverter to the power network to realize synchronous operation with the power grid. ...



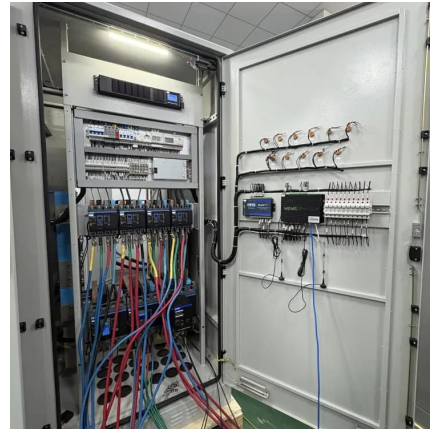
## [What Is a Grid Tie Inverter? See Why Experts Recommend It](#)

Jul 9, 2025 · A grid-tie inverter, also known as a grid-connected inverter, is a device that allows your solar energy system to work in tandem with the electrical grid. Essentially, it is the bridge ...



## What Does A Grid Connected Inverter Do

What does a grid connected inverter do? Unlock the potential of your solar system by converting DC power to AC and feeding excess power to the grid.



## Does a grid-connected inverter need a grid to ...

Sep 24, 2024 · Discover why grid-connected inverters must sync with the grid to operate. Learn how they convert DC to AC, rely on grid ...

## What is On Grid Inverter? , inverter

Dec 18, 2023 · On-grid: connect the output power of the on grid inverter to the power network to realize synchronous operation with the power grid. These inverters work by converting the ...



## **How Does a Solar Inverter Synchronize with Grid , Complete ...**

Oct 28, 2023 · For safe and reliable integration with the electric grid, the solar inverter must precisely synchronize its AC output with the grid's voltage, frequency, and phase ...



## What Does A Grid Inverter Do?

Aug 4, 2025 · A grid inverter--also called a grid-tie inverter or on-grid inverter--is a type of power electronic device designed to connect renewable energy sources, such as solar panels, to the ...



## Contact Us

---

For technical specifications, project proposals, or partnership inquiries, please visit:  
<https://www.eiei.pl>

## Scan QR Code for More Information



<https://www.eiei.pl>