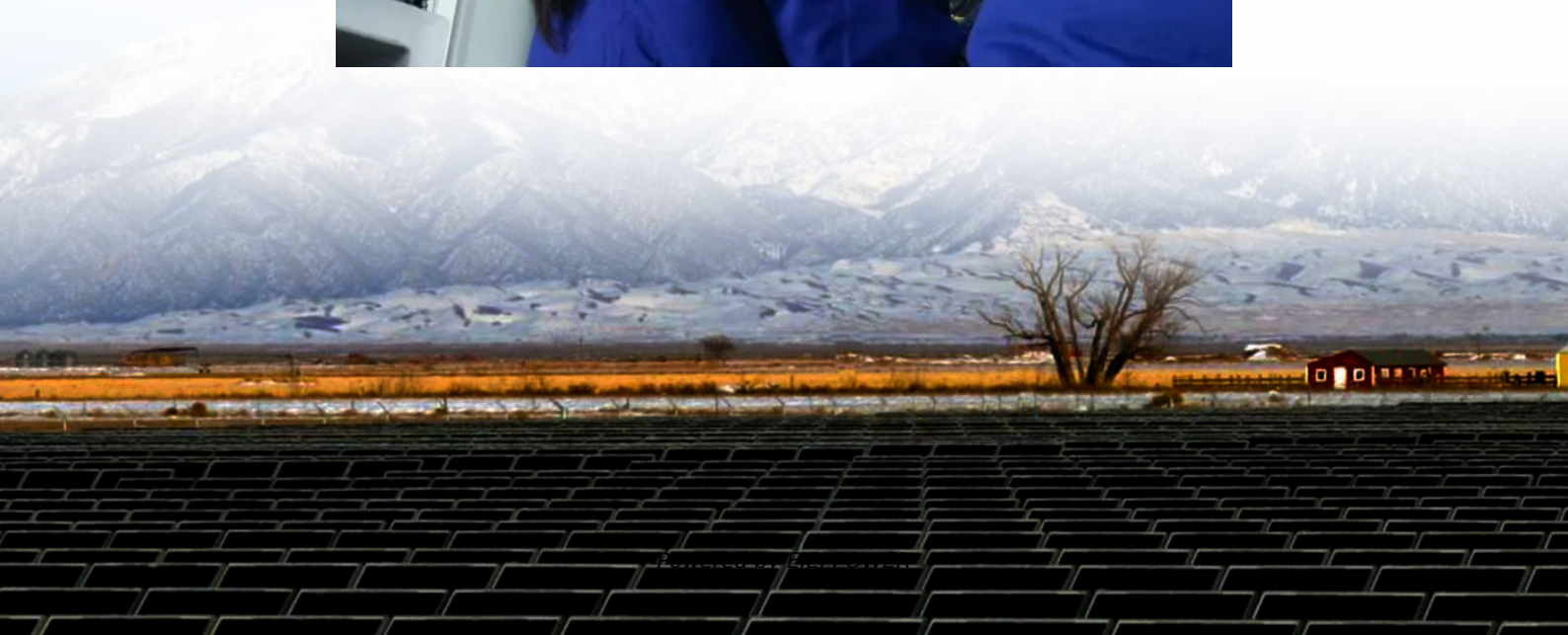


# **What does base station communication mean**





## Overview

---

What is a base station in a telecommunications network?

A base station is a critical component in a telecommunications network. A fixed transceiver that acts as the central communication hub for one or more wireless mobile client devices. In the context of cellular networks, it facilitates wireless communication between mobile devices and the core network.

What is a base station and how does it work?

A base station is a fixed point of communication between mobile devices and the wider telecom network. It transmits and receives radio signals, enabling your phone to access voice, data, and internet services. Together, thousands of base stations form a seamless web of coverage known as a cellular network. How Does It Work?

.

Why is a base station important in wireless communication?

A base station is fundamental in wireless communication, because it facilitates the connection between your device and the wider network. Without base stations, mobile data and voice services would be impossible, as there would be no infrastructure to handle the transmission of signals.

Is a base station a transmitter or broadcast point?

Base stations are generally a transceiver, capable of sending and receiving wireless signals; otherwise, if they only transmitted signals out, they would be considered a transmitter or broadcast point. A base station will have one or more radio frequency (RF) antennas to transmit and receive RF signals to other devices.



## What does base station communication mean

---



### [Base Station's Role in Wireless Communication Networks](#)

What is a base station? A base station is a critical component of wireless communication networks. It serves as the central point of a network that connects various devices, such as ...



### [Base Station Controller: Key Role in Mobile Networks](#)

Apr 21, 2025 · Discover the role of a Base Station Controller in mobile communications and how it ensures your calls and data stay connected on the go.

### [BSC \(base station controller\)](#)

Mar 4, 2023 · Conclusion In summary, the Base Station Controller (BSC) is a critical component of a cellular network that manages and controls ...



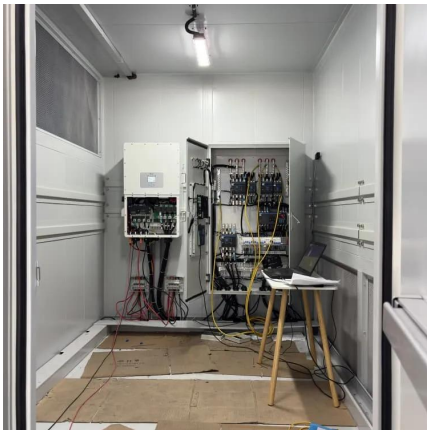
### **Base Stations**

Jul 23, 2025 · The present-day tele-space is incomplete without the base stations as these constitute an important part of the modern-day scheme ...



## Base Stations

Base stations are key components in mobile communication networks. They are fixed points that connect mobile devices, like smartphones and tablets, to the wider communication network. ...



## What is a Base Station in Telecommunications?

What is a Base Station? A base station is a critical component in a telecommunications network. A fixed transceiver that acts as the central communication hub for one or more wireless mobile ...



## Base Stations

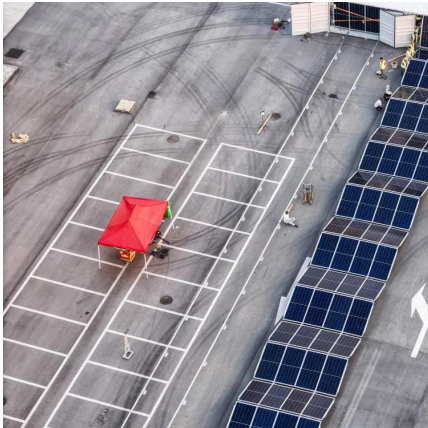
Jul 23, 2025 · The present-day tele-space is incomplete without the base stations as these constitute an important part of the modern-day scheme of wireless communications. They are ...





## What is a Mobile Switching Center and How ...

The Role of the Mobile Switching Center (MSC) Set between the base station and the Public Switched Telephone Network (PSTN), the Mobile ...

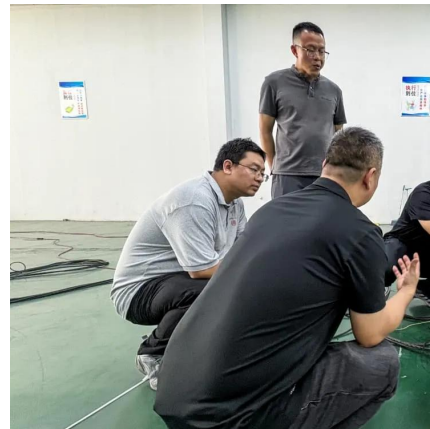


## BTS (base station transceiver)

Mar 6, 2023 · BTS, or Base Station Transceiver, is a critical component in modern mobile communication networks. BTS is responsible for ...

## What Does a Base Station Do and Why Is It Essential for ...

Sep 5, 2025 · What Is a Base Station? A base station is a fixed point of communication between mobile devices and the wider telecom network. It transmits and receives radio signals, ...



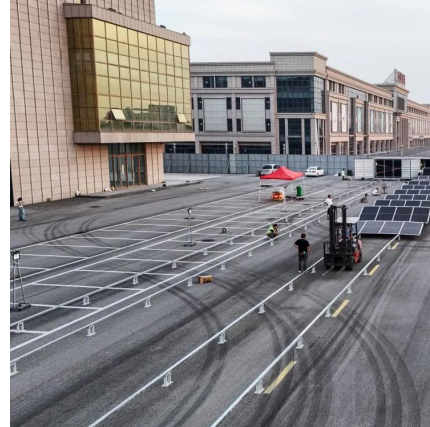
## **What Is the Role of a Base Station in Wireless Communication?**

Jun 27, 2025 · Base stations are the backbone of wireless communication networks, playing a pivotal role in signal transmission, network reliability, and high-speed data connectivity. As ...



## [What is a Base Station? -- From Communication Core to ...](#)

Aug 19, 2025 · Base stations are the core of mobile communication, and with the rise of 5G, thermal and energy challenges are increasing. This article explains the definition, structure, ...

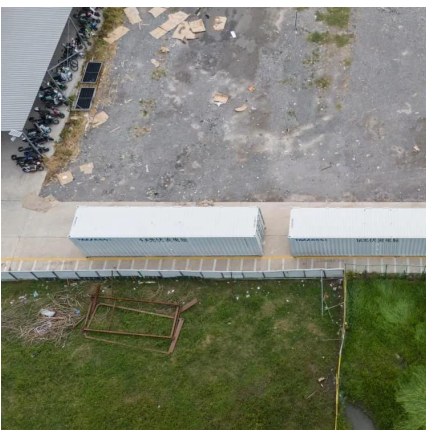


## [What is a base station?](#)

Mar 4, 2021 · In telecommunications, a base station is a fixed transceiver ...

## [What Is a Base Station? Definition and How It Works](#)

Oct 10, 2025 · A base station is a fixed transceiver that serves as the central communication point for mobile devices within a defined geographical area, known as a cell. It is sometimes called ...



## [Understanding the Basics: What is a Base ...](#)

Aug 19, 2024 · In today's digitally connected world, understanding the technology that makes communication possible is more important than ...



### What is Base Station?

Nowadays, networking has become a crucial part of our daily lives. To implement network services for users, base station plays an essential role ...

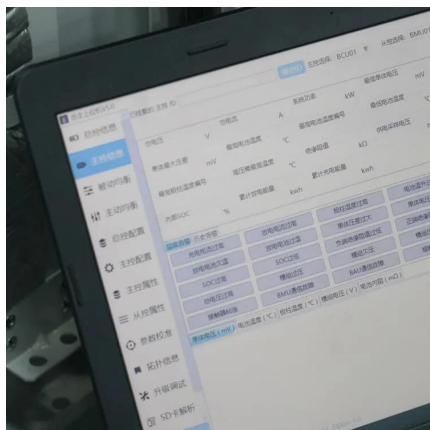
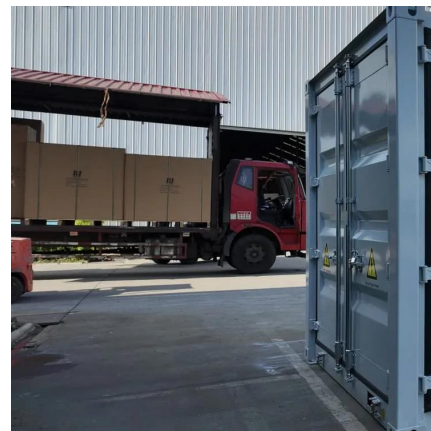


### What is a Base Station?

Jan 18, 2022 · A base station works as the main communication point for one or more wireless mobile devices. It is a fixed transceiver capable of ...

## **Understanding Base Stations: The Backbone of Wireless Communication**

Jan 6, 2025 · Base Station But what exactly is a base station, and how does it work in wireless communication networks? This article explores the concept of base stations, their functions, ...



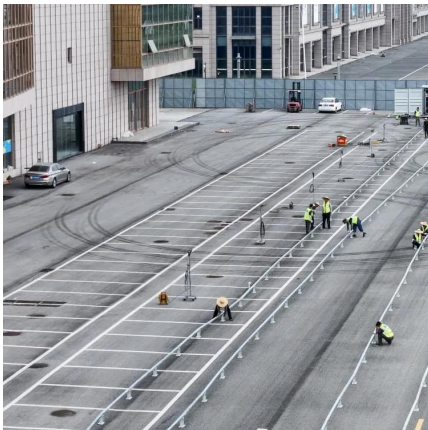
### What does base station mean? - KOOLOADER

What does base station mean? In telecommunications, a base station is a fixed transceiver that is the main communication point for one or more wireless mobile client devices. A base station ...



## What is a Base Station in ...

What is a Base Station? A base station is a critical component in a telecommunications network. A fixed transceiver that acts as the central ...

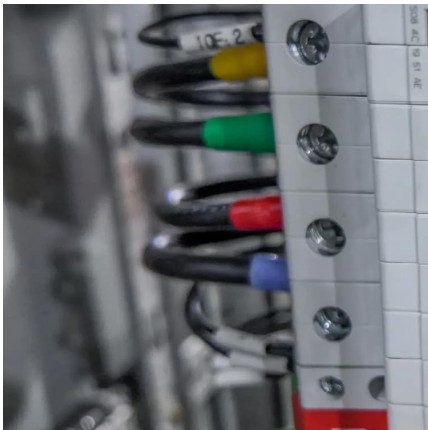


## **Base Station**

A base station is a radio receiver which may have one or multiple antenna. It was first used in mobile telecommunication networks. The base station is responsible for maintaining ...

## What is a base station?

Mar 4, 2021 · In telecommunications, a base station is a fixed transceiver that is the main communication point for one or more wireless mobile client devices.



## What Is A Base Station?

Apr 22, 2024 · A base station is an integral component of wireless communication networks, serving as a central point that manages the transmission and reception of signals between ...



## Contact Us

---

For technical specifications, project proposals, or partnership inquiries, please visit:  
<https://www.eiei.pl>

### Scan QR Code for More Information



<https://www.eiei.pl>