

What does a grid-connected inverter include





Overview

What is a grid tied inverter?

A grid-tied inverter, also known as a grid-connected or on-grid inverter, is the linchpin that connects your solar panels to the utility grid. Its primary function is to convert the direct current (DC) electricity generated by your solar panels into alternating current (AC) electricity that can be used to power your home or business.

How does a grid connected solar inverter work?

The grid-connected solar inverter operates according to a simple basic electrical theory. From a higher potential to a lower potential, the current flows. The grid-connected solar inverter attempts to keep its output voltage greater than the grid voltage. Net current flow from solar to the grid is the result of this.

How do inverters provide grid services?

In order to provide grid services, inverters need to have sources of power that they can control. This could be either generation, such as a solar panel that is currently producing electricity, or storage, like a battery system that can be used to provide power that was previously stored.

Does an inverter meet grid standards?

As aforementioned, the inverter is interconnected to the grid, so it should fulfill the grid standards as well. These standards includes power quality, grid ride through capability and islanding prevention . Power quality is mainly measured on the basis of Power Factor (PF) and Total Harmonic Distortion (THD).



What does a grid-connected inverter include



[Grid-Connected Inverter Modeling and ...](#)

Nov 21, 2023 · This article examines the modeling and control techniques of grid-connected inverters and distributed energy power conversion ...

[What Is a Grid-Tied Inverter? Explained](#)

Jun 11, 2025 · A grid-tied inverter, also known as a grid-connected or on-grid inverter, is a critical device that connects solar panels to the utility grid. Its ...



[Grid-Connected Renewable Energy Systems](#)

4 days ago · Currently, requirements for connecting distributed generation systems--like home renewable energy or wind systems--to the electricity ...

[What Does A Grid Connected Inverter Do](#)

A grid-connected inverter, also known as a grid-tie inverter, is a fundamental component of solar power systems. It converts the direct current (DC) generated by solar panels into alternating ...



[Solar Integration: Inverters and Grid Services ...](#)

1 day ago · Inverter-based resources might also respond to signals from an operator to change their power output as other supply and demand on the ...



[What is On Grid Inverter? , inverter](#)

Dec 18, 2023 · On-grid: connect the output power of the on grid inverter to the power network to realize synchronous operation with the power grid. ...



[What Is A Grid-Tied Inverter?](#)

What Exactly Is a Grid-Tied Inverter? A grid-tied inverter, also known as a grid-connected or on-grid inverter, is the linchpin that connects your solar panels to the utility grid. Its primary ...





[Solar Integration: Inverters and Grid Services Basics](#)

1 day ago · Inverter-based resources might also respond to signals from an operator to change their power output as other supply and demand on the electrical system fluctuates, a grid ...



[What is On Grid Inverter? , inverter](#)

Dec 18, 2023 · On-grid: connect the output power of the on grid inverter to the power network to realize synchronous operation with the power grid. These inverters work by converting the ...

[What Does A Grid Inverter Do?](#)

Aug 4, 2025 · A grid inverter--also called a grid-tie inverter or on-grid inverter--is a type of power electronic device designed to connect renewable energy sources, such as solar panels, to the ...



[How to Connect Hybrid Inverter to Grid?](#)

Mar 2, 2024 · A hybrid solar inverter can be connected to the grid and can feed excess energy generated by the solar panels back into the grid. This ...



[What Is a Grid-Tied Inverter? Explained](#)

Jun 11, 2025 · A grid-tied inverter, also known as a grid-connected or on-grid inverter, is a critical device that connects solar panels to the utility grid. Its primary function is to convert the direct ...



[Grid Connected Inverter Reference Design \(Rev. D\)](#)

May 11, 2022 · Description This reference design implements single-phase inverter (DC/AC) control using a C2000™ microcontroller (MCU). The design supports two modes of operation ...

[Grid-Connected Inverter System](#)

A grid-connected inverter system is defined as a power electronic device that converts direct current (DC) from sources like photovoltaic (PV) systems into alternating current (AC) for ...



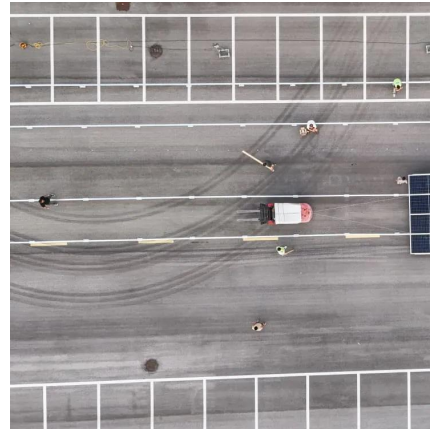
[What is a Grid-Tied Inverter?](#)

Nov 17, 2023 · The grid-connected solar inverter attempts to keep its output voltage greater than the grid voltage. Net current flow from solar to the ...



What is a Grid-Tied Inverter?

Nov 17, 2023 · The grid-connected solar inverter attempts to keep its output voltage greater than the grid voltage. Net current flow from solar to the grid is the result of this. It's still not as easy ...

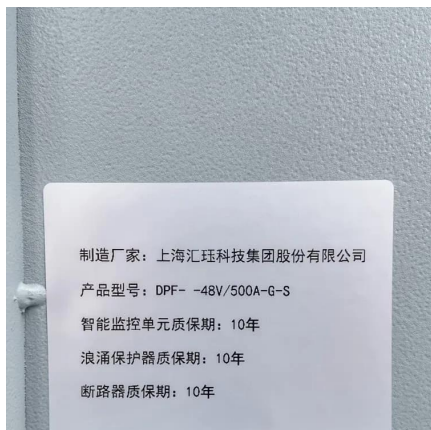


What is a Solar Power Grid tie Inverter and How Does it Work?

Nov 5, 2024 · A solar power grid tie inverter is a central component for any home solar system connected to the main power supply. Here, we look closely at the subject.

Does a grid-connected inverter need a grid to ...

Sep 24, 2024 · A grid-connected inverter requires the grid to function properly because it relies on the frequency and phase reference signals ...



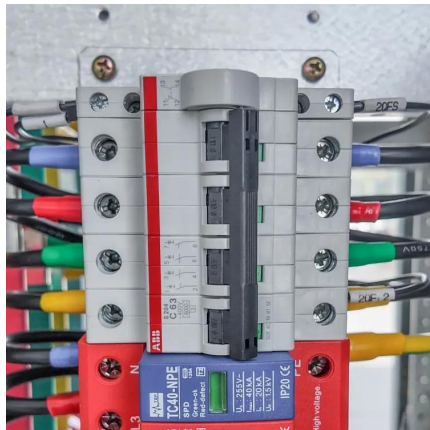
Grid-Connected Inverters: The Ultimate Guide

Jun 11, 2025 · Discover the crucial role of grid-connected inverters in Smart Grids, their benefits, and the technology behind them.



Does a grid-connected inverter need a grid to operate?

Sep 24, 2024 · A grid-connected inverter requires the grid to function properly because it relies on the frequency and phase reference signals provided by the grid and must synchronize with the ...

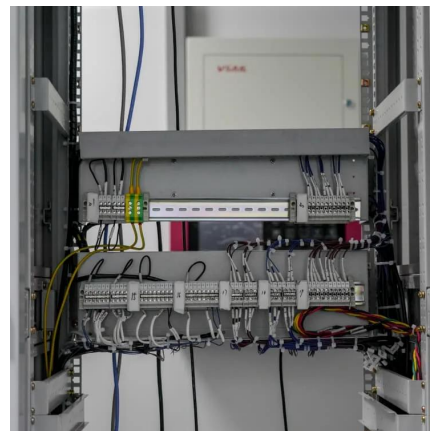


Grid Connected PV System Connects PV ...

Jun 21, 2024 · Grid Connected PV System Connecting your Solar System to the Grid A grid connected PV system is one where the photovoltaic ...

What Is A Grid-Tied Inverter?

What Exactly Is a Grid-Tied Inverter? A grid-tied inverter, also known as a grid-connected or on-grid inverter, is the linchpin that connects your solar ...



What is a Grid-Connected PV System?

Jul 22, 2025 · A grid-connected PV system is connected to the local utility grid. The exchange of electricity units between the system and the grid ...



Contact Us

For technical specifications, project proposals, or partnership inquiries, please visit:
<https://www.eiei.pl>

Scan QR Code for More Information



<https://www.eiei.pl>