

What does a base station site consist of





Overview

What does a base station do?

A base station connects your phone to the network. It acts as a hub between mobile devices and the core system. Base stations form the backbone of 4G LTE and 5G networks. They provide the coverage you need for calls and data. Base stations enable voice, data, and internet access. They transmit radio signals within a set area.

What is a base station in telecommunications?

In telecommunications, a base station is a fixed transceiver that serves as the main communication point for one or more wireless mobile client devices. It not only connects wireless devices to each other but also links them to other networks or devices, often through dedicated high-bandwidth wired or fiber optic connections.

What is a base station in a cellular network?

Base Stations A base station, often housed within a cell site, is the central point in a cellular network where signals are transmitted and received from mobile devices. It consists of electronic equipment, including transceivers, antennas, and signal processors, that manage the communication within a specific geographical area or "cell."

What are the components of a base station?

The base station will have one or more RF antennas installed to transmit and receive RF signals from other devices. The block diagram of a base station typically includes the following key components: **Baseband Processor:** The baseband processor too deals with different communication protocols and interfaces with mobile network infrastructure.



What does a base station site consist of



[What are Base Station in Telecommunications?](#)

Nov 21, 2025 · A base station connects your phone to the network. It acts as a hub between mobile devices and the core system.

Base Stations

Jul 23, 2025 · The present-day tele-space is incomplete without the base stations as these constitute an important part of the modern-day scheme of wireless communications. They are ...



[What Is A Base Station?](#)

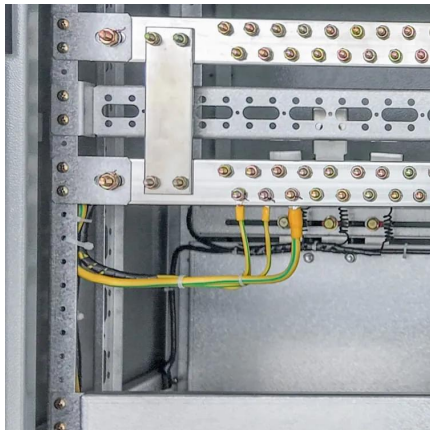
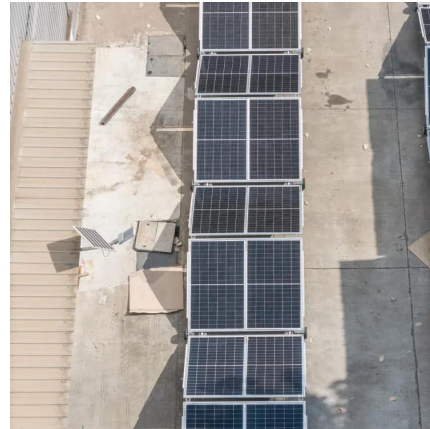
Apr 22, 2024 · A base station is an integral component of wireless communication networks, serving as a central point that manages the transmission and reception of signals between ...

[1. What Is a Base Station and What Are Its Core Components?](#)

Nov 28, 2025 · A mobile communication base station is the radio facility that covers a specific



area and enables data transmission between mobile phones and the core network. It is the ...



[What Is a Base Station? Definition and How It Works](#)

Oct 10, 2025 · The base station also executes a process known as "handoff" or "handover" as a mobile device moves from one cell's coverage area to another. The mobile device ...

[What Is a Base Station?](#)

Sep 7, 2025 · Alternatively called the cell tower or cell site, a base station is a tall tower equipped with electronics that transmit data to and cellular ...



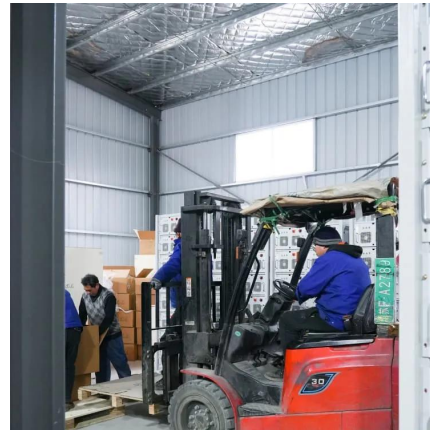
[Base Stations and Cell Towers: The Pillars of Mobile ...](#)

May 16, 2024 · Base Stations A base station, often housed within a cell site, is the central point in a cellular network where signals are transmitted and received from mobile devices. It consists ...



[What is a Base Station? A Complete Beginner's Guide](#)

Oct 10, 2025 · Frequently Asked Questions What is the typical range of a base station? The range of a base station varies significantly depending on its type, power output, and environmental ...



[What Is a Base Station?](#)

Sep 7, 2025 · Alternatively called the cell tower or cell site, a base station is a tall tower equipped with electronics that transmit data to and cellular phones. These towers are often located ...

What Is a Base Station? Exploring the Core of 5G Networks ...

Aug 19, 2025 · The base station is an indispensable piece of infrastructure in the mobile communication network, silently supporting every phone call, message, and network ...



[What is a base station?](#)

Mar 4, 2021 · What is a base station? In telecommunications, a base station is a fixed transceiver that is the main communication point for one or more ...



What is a base station?

Mar 4, 2021 · What is a base station? In telecommunications, a base station is a fixed transceiver that is the main communication point for one or more wireless mobile client devices. A base ...



Contact Us

For technical specifications, project proposals, or partnership inquiries, please visit:
<https://www.eiei.pl>

Scan QR Code for More Information



<https://www.eiei.pl>