

What battery should I use with a pure sine wave inverter





Overview

Which battery is best for a sine wave inverter?

Deep-cycle batteries work best for your sine wave inverters. Here's why: They can get discharged and recharged multiple times and produce steady power over an extended period. Deep-cycle batteries have low internal resistance. So, they don't get hot when you charge them up with solar power, unlike other lead-acid batteries.

Should you power up a pure sine wave power inverter?

Now let's talk about inefficiencies and that parasite draw. By just simply powering up the inverter, there is a no-load-draw, or what's commonly referred to as a parasitic draw coming off the battery pack. It is a good idea to power down the pure sine wave power inverter if you are not going to be using it.

What is a pure sine inverter?

Pure sine inverters, also known as true sine wave inverters, are a little more expensive than modified sine wave inverters, but they create a cleaner form of power that closely mimics your home's household plug.

Are deep cycle batteries good for sine wave inverters?

Deep-cycle batteries have low internal resistance. So, they don't get hot when you charge them up with solar power, unlike other lead-acid batteries. So, if you are looking for inverter batteries for your sine wave inverters, you can contact Exeltech. The company offers a wide range of batteries at affordable prices.



What battery should I use with a pure sine wave inverter

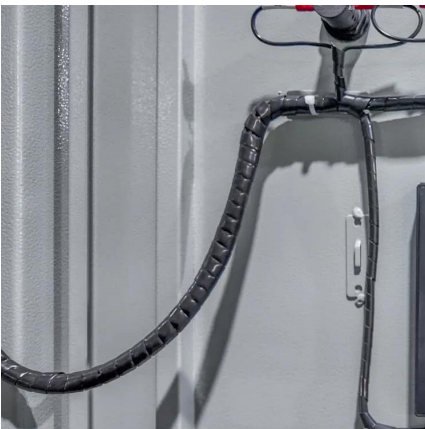


[What Type of Battery Should I Use for My Inverter?](#)

Sep 13, 2022 · When using an inverter, it is essential to use the correct type of battery to enhance the lifespan of both the inverter and the batteries. The wrong kind of battery may damage your ...

A Guide to Choosing Between Sine Wave and Square Wave Inverter

A guide to choosing between sine wave & square wave inverter batteries. Compare output quality, efficiency, safety & see SOROTEC's pure sine wave systems.



[Reliable Pure Sine Wave Inverter Selection](#)

Apr 27, 2025 · Learn how to choose, install, and use pure sine wave inverters to protect your electronics and keep everything running during blackouts ...

How to Determine Battery Sizes when using Pure Sine Wave ...

Oct 8, 2025 · Sine wave inverters come in all sizes, from a small micro sine wave inverter, to larger kilowatt pure sine wave power inverters. When choosing your sine waveform inverters, ...



[Step-by-Step Guide to Using a Pure Sine](#)

...

Jun 13, 2025 · Contents hide 1 Introduction 2 What Is a Pure Sine Wave Inverter 3000W? 3 Understanding Inverter Size and Capacity 4 LiFePO4 ...

[How to Size a Pure Sine Wave Inverter? , inverter](#)

Oct 5, 2024 · Consider battery pack capacity
Battery size: If you use a pure sine power inverter with a battery pack, make sure the battery can provide the required power. Consider the ...



[How to Size a Pure Sine Wave Inverter?](#)

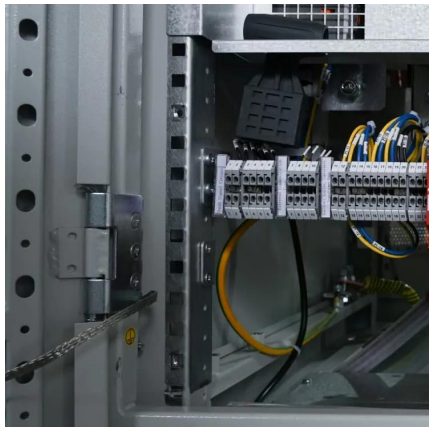
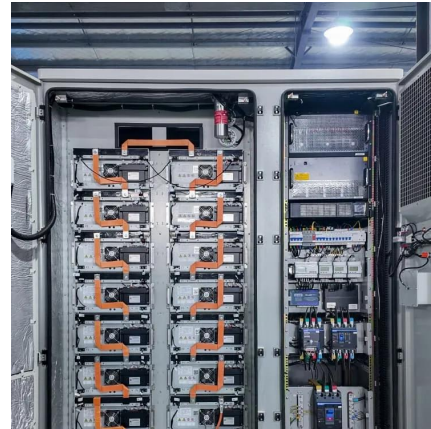
Oct 5, 2024 · Consider battery pack capacity
Battery size: If you use a pure sine power inverter with a battery pack, make sure the battery can ...





[How to Choose the Right Inverter for Lithium Batteries?](#)

Apr 11, 2025 · Answer: To choose the right inverter for lithium batteries, match the inverter's voltage and capacity to your battery's specifications, prioritize pure sine wave inverters for ...



[Do Pure Sine Wave Battery Backup Systems Have Inverters ...](#)

Apr 16, 2025 · An inverter in a pure sine wave battery backup system is a device that converts direct current (DC) from batteries into alternating current (AC) for household or commercial use.

[Calculate Battery Size For Any Size Inverter \(Using Our ...](#)

Inverter Battery Size Calculator
How to Calculate Battery Capacity For Inverter
How Many Batteries For 3000-Watt Inverter
Battery Size Chart For Inverter
Battery to Inverter Wire Size Chart
You would need around 24v150Ah Lithium or 24v 300Ah Lead-acid Battery to run a 3000-watt inverter for 1 hour at its full capacity
See more on dotwatts Exeltech



[What Type of Battery Should I Use for My ...](#)

Sep 13, 2022 · When using an inverter, it is essential to use the correct type of battery to enhance the lifespan of both the inverter and the batteries. ...

[Battery Compatibility Guide for Pure Sine](#)



[Wave Inverters](#)

Apr 22, 2025 · A pure sine wave inverter is only as good as the battery it's paired with. Whether you're using AGM, GEL, or lithium, ensure voltage and communication compatibility for the ...

[Step-by-Step Guide to Using a Pure Sine Wave Inverter ...](#)

Jun 13, 2025 · Contents hide 1 Introduction 2 What Is a Pure Sine Wave Inverter 3000W? 3 Understanding Inverter Size and Capacity 4 LiFePO4 Battery Sizing and Compatibility 5 Solar ...



[Reliable Pure Sine Wave Inverter Selection](#)

Apr 27, 2025 · Learn how to choose, install, and use pure sine wave inverters to protect your electronics and keep everything running during blackouts and off-grid adventures.

[Calculate Battery Size For Any Size Inverter \(Using Our ...](#)

Mar 3, 2023 · Assumptions Modified sine wave inverter efficiency: 85% Pure sine wave inverter efficiency: 90% Lithium Battery: 100% Depth of discharge limit lead-acid Battery: 50% Depth of ...





Contact Us

For technical specifications, project proposals, or partnership inquiries, please visit:
<https://www.eiei.pl>

Scan QR Code for More Information



<https://www.eiei.pl>