

# Ups battery cabinet alarm





## Overview

---

How do I connect a ups to a building alarm?

Line-Up-and-Match Wiring. Route the battery detect interface wiring from the UPS battery detect (building alarm) interface terminals through the top inter-cabinet access pass-through (see Figure 15) of the UPS cabinet and IBC to the IBC battery interface terminal block TB3. See Figure 27 or Figure 28 for terminal locations.

How many 93pm battery cabinets can a UPS system use?

The UPS system has been evaluated for use with a maximum of four 93PM Battery Cabinets. Use of any other configuration may result in fire, death, and voiding of the warranty. Disconnect the charging source prior to connecting or disconnecting battery terminals. Determine if the battery is inadvertently grounded.

What is the difference between a ups and a battery cabinet?

The UPS is available in 50 or 60 Hz with various output power ratings while the battery cabinet is available with 16 battery modules. The table below depicts the system model numbers and the stored energy capacity of the system. The End of Discharge Voltage limit for each battery cabinet for all models is 400.8V DC. Table 3.

How many battery modules does a ups have?

The System is housed in a one or two free-standing cabinets with safety shields behind the door and front panels. The UPS is available in 50 or 60 Hz with various output power ratings while the battery cabinet is available with 16 battery modules. The table below depicts the system model numbers and the stored energy capacity of the system.



## Ups battery cabinet alarm

---



### [Comprehensive UPS Battery Diagnostic System](#)

Each Albér BDS-40 unit will monitor all the batteries in one cabinet, up to 40 jars. Two different units are available. The Albér BDS-40 Base Unit is the central point where UPS-supplied ...

### [Albér BDSUi and Albér BDSU-50 Alb](#)

Nov 20, 2018 · How Confident Are You That Your Batteries Will Be Available When You Need Them? Unplanned data center outages present a difficult and costly challenge for ...



### [Eaton 93PM Integrated Battery Cabinet-Large and Large ...](#)

Mar 31, 2025 · In addition, the IBC-LH provides a single battery cabinet solution for 93PM UPS systems 200 kW and below. 93PM 400 kW UPS systems above 200 kW require at least two ...

## UPS Battery Cabinets

Mar 5, 2025 · ZincFive BC Series UPS Battery Cabinet Introduction Each ZincFive BC Series UPS Battery Cabinet features ZincFive's patented Nickel-Zinc batteries and a built-in battery ...



[Eaton three-phase UPS battery handbook](#)

Apr 3, 2025 · above safe levels, the management system independently disconnects the battery or string via multiple different disconnection means, and notifies the user via the battery ...



[What Your UPS Alarm Is Trying To Tell You - ...](#)

Apr 7, 2022 · The most common reason for a steady beeping alarm is to alert you that the power supply has been interrupted and your system is now ...



[Descriptions of Smart-UPS Audible Alarms](#)

Sep 22, 2023 · UPS is on battery, and in a low-battery state (battery is almost discharged). These four different conditions each will produce a different audible and visual alarm.





### [UPS Fire Suppression System , Tube-Based DLP Technology ...](#)

Nov 29, 2025 · Automatic tube-based DLP fire suppression system for UPS, battery cabinets and electrical panels. Fast heat detection, clean agent discharge, zero damage and 24x7 ...

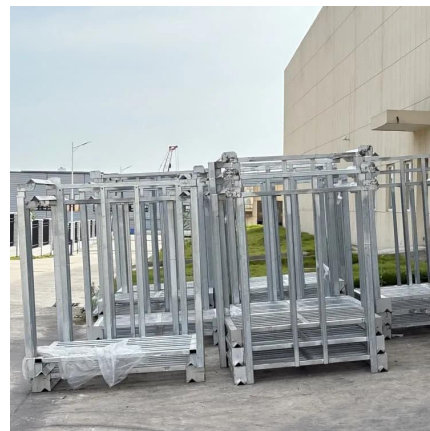


### [Eaton 93PM L \(208V\) UPS and Samsung Gen 3 Battery ...](#)

May 1, 2025 · The installation manuals of the UPS and battery cabinet describe how to install and operate the Eaton 93PM-L (208V) UPS and battery cabinets. Read and understand the ...

### [Alber BDS-40 Battery Monitoring and Diagnostic System](#)

Oct 18, 2025 · The BDS-40, especially designed and optimized to monitor UPS batteries in cabinets, continuously monitors all critical battery parameters, automatically performs periodic ...



### [What Your UPS Alarm Is Trying To Tell You - UPS Solutions](#)

Apr 7, 2022 · The most common reason for a steady beeping alarm is to alert you that the power supply has been interrupted and your system is now running from the backup battery. For ...



## Contact Us

---

For technical specifications, project proposals, or partnership inquiries, please visit:  
<https://www.eiei.pl>

### Scan QR Code for More Information



<https://www.eiei.pl>