

# UPS battery cabinet model and battery size





## Overview

---

How do I connect a battery to a ups?

Connect and route cables from positive (+) and negative (-) terminals in the bottom of the first battery cabinet into the UPS cabinet. Connect the (+) lead to terminal E4 (+) and the (-) to terminal E5 (-) in the UPS cabinet.

What size battery cabinet does Arimon offer?

Arimon offers several standard monobloc or top terminal battery cabinet sizes for 10 kVA to 125 kVA UPS systems accommodating monobloc batteries from 100 WPC (64 batteries) to 540 WPC (40 batteries) or can work with you on even larger custom battery cabinet solutions if needed.

Where is the UPS battery cabinet located?

The battery cabinet may be located to either the left or right of the UPS cabinet. The recommended location is to the left of the UPS cabinet. This procedure assumes the battery cabinet is located to the left of the UPS cabinet. Figure 3-2. UPS with Line-up-and-Match IBC-S.

How do I connect a ups to a battery cabinet?

Locate the UPS-to-battery cabinet breaker sensing cable inside the first battery cabinet. Mate the connector on this cable with the matching connector in the cabinet (see Drawing 164201536-8 on page A-17). Route the other end of this cable through conduit (top or bottom entry) to UPS cabinet and connect to terminal strip TB2.



## UPS battery cabinet model and battery size

---



### Battery cabinet UPS

Aug 4, 2022 · BATTERY CABINET FOR ALL THREE-PHASE UPS Universal battery cabinets for all three-phase Legrand UPS from 10kVA up to 800kVA power range. The Battery cabinet is ...

### Uninterruptible Power Supply (UPS) Backup Battery Cabinets ...

2 days ago · Top Terminal (Monobloc) Battery Cabinets Arimon offers several standard monobloc or top terminal battery cabinet sizes for 10 kVA to 125 kVA UPS systems accommodating ...



### UPS Battery Cabinets

Unified Power offers a complete line of battery cabinets for both UPS and Telecom Applications.

### [NICKEL-ZINC BC 2 UPS Battery Cabinets](#)

Nov 14, 2023 · Safety - No thermal runaway or shipping restrictions for NiZn batteries. More power, more runtime, more choices, with the BC 2 product line. The ZincFive BC 2 lineup ...



### [BKPOWER Battery Cabinet BK-BC Series](#) [---- Safe and ...](#)

Nov 15, 2025 · The BKPOWER Battery Cabinet BK-BC Series, made of high - quality materials, is durable, fire - resistant, dust - proof, and moisture - proof. It provides a stable storage ...



### **UPS Battery Cabinets**

Oct 7, 2024 · 1.- UPS Battery Cabinets: Keyitec provides batteries and battery cabinets to increase the battery run time of almost any UPS brands and sizes.



### [Eaton 9390 Integrated Battery Cabinet](#) [\(Models IBC-S ...](#)

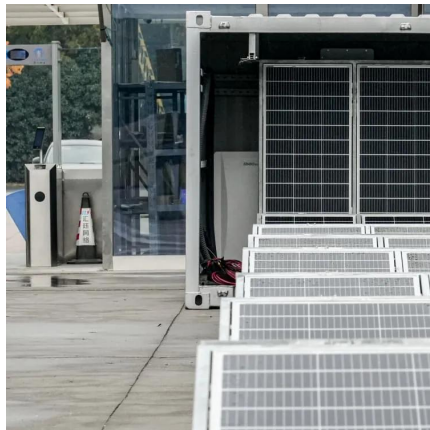
Aug 16, 2024 · The Integrated Battery Cabinet (IBC) systems are housed in single free-standing cabinets. Two models are available: Model IBC-S (small cabinet) and Model IBC-L (large ...





### Battery cabinets and accessories Extendable runtime

Mar 15, 2024 · Extendable runtime ABB offers a line of battery cabinets for its modular and standalone UPS series. These battery cabinets with integral overcurrent protection are ...

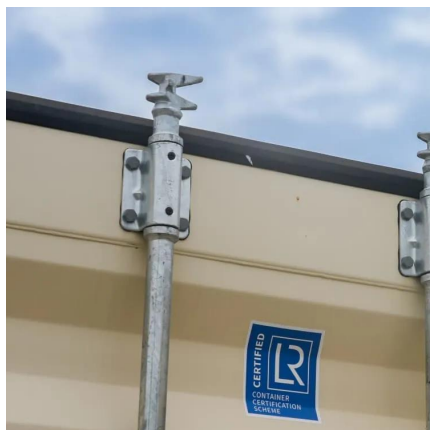


### BATTERY CABINET FOR 3PH UPS 310620-310621-310622 ...

Feb 10, 2023 · Legrand offers a complete range of battery cabinets for the whole Three-Phase UPS portfolio in Legrand UPS Catalog, from 10kVA up to 800kVA power range. The Battery ...

### Cabinet UPS Range Capacity dimensions Cabinet 7 AH.

Nov 14, 2019 · Cabinet UPS Range Capacity dimensions Cabinet 7 AH. 12 AH. 18 AH. 25 AH. 40 AH. 55 AH. 65 AH. 80 AH. 100 AH. 120 AH 150 AH 200 AH Width Depth Height Weight Above ...



### Uninterruptible Power Supply (UPS) Backup ...

2 days ago · Top Terminal (Monobloc) Battery Cabinets Arimon offers several standard monobloc or top terminal battery cabinet sizes for 10 ...



## Contact Us

---

For technical specifications, project proposals, or partnership inquiries, please visit:  
<https://www.eiei.pl>

### Scan QR Code for More Information



<https://www.eiei.pl>