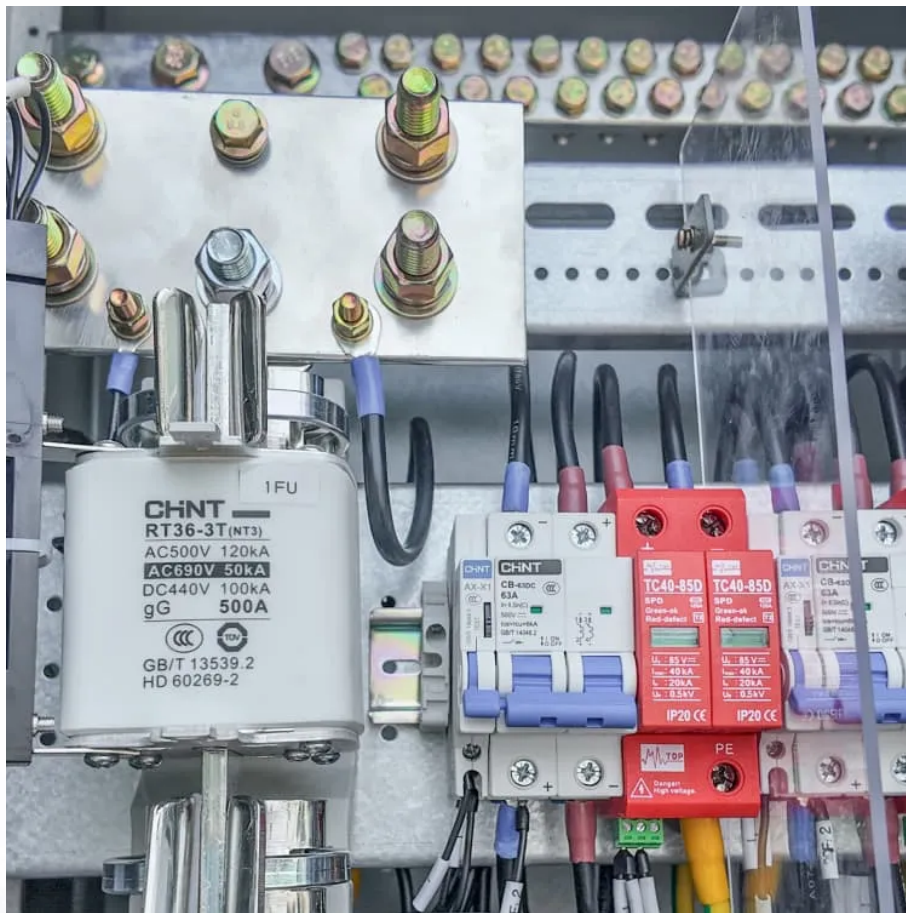


UPS battery cabinet and battery cabinet configuration





Overview

Where do I install a line-up and match Battery Cabinet?

Line-up-and-match battery cabinets are installed adjacent to the UPS. The recommended installation location is on the right side of the UPS cabinet as viewed from the front of the cabinet. See Figure 3 for line-up-and-match configuration views. Figure 3. Eaton 93PM 100 kW UPS and Two 93PM Integrated Battery Cabinets.

How do I connect a ups to a battery cabinet?

Locate the UPS-to-battery cabinet breaker sensing cable inside the first battery cabinet. Mate the connector on this cable with the matching connector in the cabinet (see Drawing 164201536-8 on page A-17). Route the other end of this cable through conduit (top or bottom entry) to UPS cabinet and connect to terminal strip TB2.

How many 93pm battery cabinets can a UPS system use?

The UPS system has been evaluated for use with a maximum of four 93PM Battery Cabinets. Use of any other configuration may result in fire, death, and voiding of the warranty. Disconnect the charging source prior to connecting or disconnecting battery terminals. Determine if the battery is inadvertently grounded.

Where is the battery cabinet located?

The battery cabinet may be located to either the right or left of the UPS cabinet. The recommended location is to the right of the UPS cabinet. This procedure assumes the battery cabinet is located to the right of the UPS cabinet. 21.



UPS battery cabinet and battery cabinet configuration

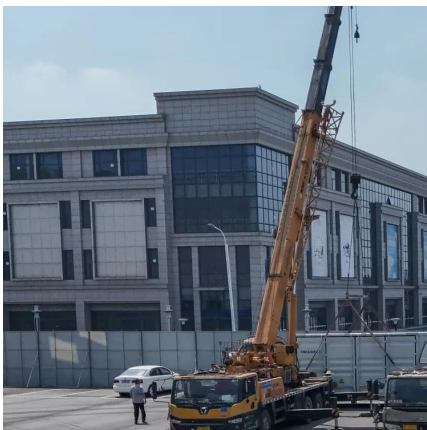


UPS Battery Cabinets

Mar 5, 2025 · ZincFive BC Series UPS Battery Cabinet Introduction Each ZincFive BC Series UPS Battery Cabinet features ZincFive's patented Nickel-Zinc batteries and a built-in battery ...

[UPS Battery Cabinet: Ensuring Reliable Power Backup & Safety](#)

Sep 26, 2024 · A UPS battery cabinet is a protective enclosure designed to house multiple batteries that work in tandem with a UPS system. These cabinets are essential for ...



[UNDERSTANDING UPS SYSTEMS AND BATTERIES](#)

Jul 17, 2024 · On battery cabinets, the disconnect switch should be mounted in the door to allow the battery to be disconnected from the UPS before the door is opened. This best practice is ...

Installation specification for UPS battery cabinets and racks

Aug 7, 2024 · The UPS battery cabinet can safely and beautifully fit batteries inside, and it can also save space. The distribution cabinet configured



for UPS is generally used for UPS output ...



[UPS Battery Cabinet: Ensuring Reliable Power ...](#)

Sep 26, 2024 · A UPS battery cabinet is a protective enclosure designed to house multiple batteries that work in tandem with a UPS system. These ...

U-ENM00044

Feb 3, 2025 · 3 SYSTEM OVERVIEW During normal UPS operation the UPS uses the AC input power source to supply the load with power while also maintaining the charge on the backup ...



[Eaton 9390 Integrated Battery Cabinet \(Models IBC-S ...](#)

Aug 16, 2024 · The term line-up-and-match refers to battery cabinets that are physically attached to the UPS, share internal wiring, and use the battery cabinet breaker as the battery isolation ...





Installation Procedure for UPS and Lithium-ion Battery Cabinets

For moving or decommissioning the UPS or the Lithium-ion battery cabinets after installation has been completed, see Decommission or Move the UPS to a New Location or Decommission or ...

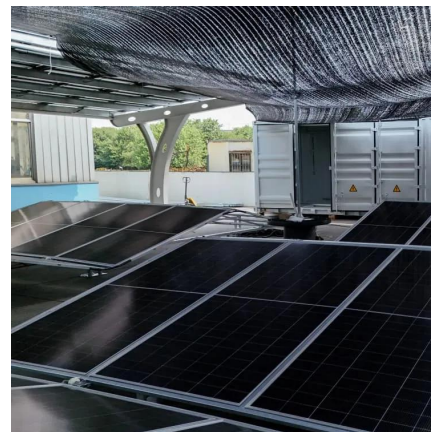


[Configuration Requirements of Master/Slave Cabinets and ...](#)

Jan 20, 2025 · Battery cabinet connection requirements: If the UPS capacity is 800 kVA or lower, connect battery cables only to the power cabinet 1. If the UPS capacity exceeds 800 kVA, ...

[Switching & Protection solutions for Battery Racks in ...](#)

Mar 23, 2024 · In Battery Energy Storage Systems, battery racks are responsible for storing the energy coming from the grid or power generator. They provide rack-level protection and are ...



[Eaton 93PM Integrated Battery Cabinet-Large and Large ...](#)

Mar 31, 2025 · In addition, the IBC-LH provides a single battery cabinet solution for 93PM UPS systems 200 kW and below. 93PM 400 kW UPS systems above 200 kW require at least two ...



Contact Us

For technical specifications, project proposals, or partnership inquiries, please visit:
<https://www.eiei.pl>

Scan QR Code for More Information



<https://www.eiei.pl>