

# **Transmission of base station communication signals**





## Overview

---

What is a signal transmission & reception base station?

Signal Transmission and Reception Base stations use antennas mounted on cell towers to send and receive radio signals to and from mobile devices within their coverage area. This communication enables users to make voice calls, send texts, and access data services, connecting them to the wider world.

What is a base station in a telecommunications network?

A base station is a critical component in a telecommunications network. A fixed transceiver that acts as the central communication hub for one or more wireless mobile client devices. In the context of cellular networks, it facilitates wireless communication between mobile devices and the core network.

Why is a base station important in wireless communication?

A base station is fundamental in wireless communication, because it facilitates the connection between your device and the wider network. Without base stations, mobile data and voice services would be impossible, as there would be no infrastructure to handle the transmission of signals.

How do base stations work?

Base stations use antennas mounted on cell towers to send and receive radio signals to and from mobile devices within their coverage area. This communication enables users to make voice calls, send texts, and access data services, connecting them to the wider world. Network Management and Optimization



## Transmission of base station communication signals

---



### [Exploring communication base stations](#)

Dec 18, 2024 · A base station is mainly composed of a base station transceiver station (BTS) and a base station controller (BSC). BTS is ...

### **What Is the Role of a Base Station in Wireless Communication?**

Jun 27, 2025 · Base stations are the backbone of wireless communication networks, playing a pivotal role in signal transmission, network reliability, and high-speed data connectivity. As ...



### [Understanding Base Stations in Mobile Communication](#)

Dec 5, 2025 · In summary, base stations play a multifaceted role in mobile communication by ensuring effective signal transmission and reception, executing seamless handoff procedures, ...

### [Base Stations and Cell Towers: The Pillars of Mobile ...](#)

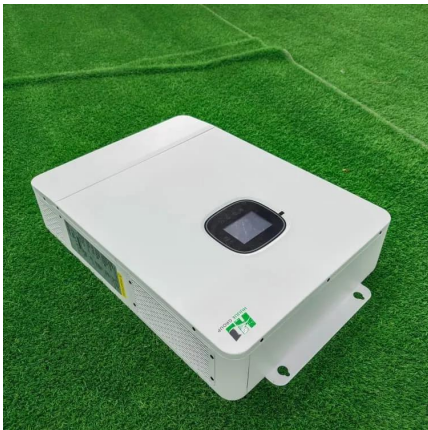
May 16, 2024 · Key Functions of Base Stations and Cell Towers Signal Transmission and Reception Base stations use antennas mounted on cell towers to send and receive radio ...



### [Base Station's Role in Wireless Communication Networks](#)

The base station transmits and receives signals, ensuring seamless communication over radio frequencies. In essence, it acts as the intermediary between the user and the network,

...



### **Base Stations**

Jul 23, 2025 · The present-day tele-space is incomplete without the base stations as these constitute an important part of the modern-day scheme of wireless communications. They are ...



### [Exploring communication base stations](#)

Dec 18, 2024 · A base station is mainly composed of a base station transceiver station (BTS) and a base station controller (BSC). BTS is responsible for the reception and transmission of

...





## What is a Base Station in Telecommunications?

What Does a Base Station do? Signal Transmission and Reception: The primary function of a base station is to transmit and receive radio signals. It communicates with mobile devices, ...

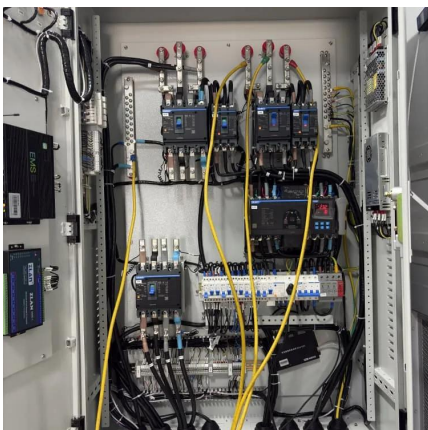
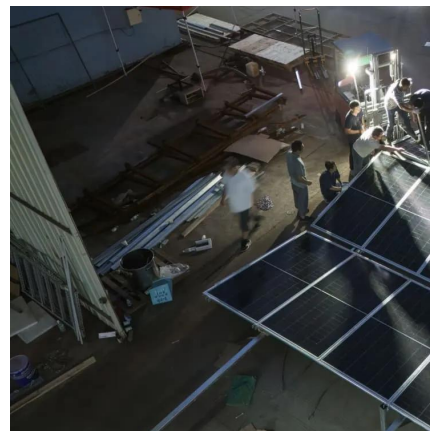


## **Cellular Network Base Stations: The Backbone of Wireless Communication**

Signal Transmission and Reception: Base stations transmit radio signals carrying data and voice information to mobile devices, and they receive signals from those devices. This two-way ...

## What is a Base Station in ...

What Does a Base Station do? Signal Transmission and Reception: The primary function of a base station is to transmit and receive radio signals. ...



## **Understanding the Basics of a Base Transceiver Station: A ...**

Aug 19, 2025 · The base station control function (BCF) is responsible for managing the operational states of the transceivers, optimizing signal transmission and reception, and ...



## What Is A Base Station?

Apr 22, 2024 · A base station is an integral component of wireless communication networks, serving as a central point that manages the transmission and reception of signals between ...



## Contact Us

---

For technical specifications, project proposals, or partnership inquiries, please visit:  
<https://www.eiei.pl>

## Scan QR Code for More Information



<https://www.eiei.pl>