

# Total voltage of base station battery pack is too high





## Overview

---

What makes a telecom battery pack compatible with a base station?

Compatibility and Installation Voltage Compatibility: 48V is the standard voltage for telecom base stations, so the battery pack's output voltage must align with base station equipment requirements. Modular Design: A modular structure simplifies installation, maintenance, and scalability.

What is the difference between a BMS and a total pack voltage sensor?

In the context of a battery system, a Battery Management System (BMS) manages, protects, and balances the battery pack. A total pack voltage sensor is a component within the BMS that provides the system with a measurement of the total voltage of the battery pack.

How does a battery pack work?

A battery pack is made up of multiple cells connected in series. Even slight variations in individual cell characteristics can significantly affect the overall performance of the battery pack. That's why it's essential to monitor voltage and temperature at the cell level, and not just the pack level.

What is a total pack voltage sensor in a BMS?

In the context of a BMS, a total pack voltage sensor is used to provide the BMS with a measurement of the total voltage of the battery pack. In versions of the firmware 2.6.5 and prior, the voltage measured by the total pack voltage sensor is used for enforcing the minimum and maximum pack voltage limits.



## Total voltage of base station battery pack is too high

---



### [Telecom Base Station Backup Power Solution: Design Guide ...](#)

Jun 5, 2025 · Discover the 48V 100Ah LiFePO4 battery pack for telecom base stations: safe, long-lasting, and eco-friendly. Optimize reliability with our design guide.

### [MAX CHARGING POWER TOO HIGH-HIGH ...](#)

Nov 16, 2023 · You have defined a battery pack of 512V / 103 Ah, i.e. 52.7 kW "gross". You have defined a PV system which will deliver 5.4 kW ...



### **Pack voltage is reading a different voltage than measured by ...**

The total pack voltage sensor is used to provide the BMS with a measurement of the total voltage of the battery pack. In versions of the firmware 2.6.5 and prior, the voltage measured by total ...



### [Battery Pack Voltage Measurement: What You Need to Know](#)

The terminal-to-ground voltage and module-to-module voltage of an instrument are important to safely measure battery cell voltage and temperature during charge/discharge testing of high ...



### [Telecom Base Station Backup Power Solution: ...](#)

Jun 5, 2025 · Discover the 48V 100Ah LiFePO4 battery pack for telecom base stations: safe, long-lasting, and eco-friendly. Optimize reliability with ...



### [3102 Battery Pack Overvoltage](#)

3102 Battery Pack Overvoltage - LUNA2000-(107-215) Series Smart String ESS Alarm Reference - Huawei



### [what happens if battery voltage is too high](#)

Dec 8, 2023 · The effect of excessive charging voltage on the battery: 1, the charger and rechargeable battery is to match, charging voltage is too large will cause excessive current, ...





### MAX CHARGING POWER TOO HIGH-HIGH VOLTAGE BATTERY ...

Nov 16, 2023 · You have defined a battery pack of 512V / 103 Ah, i.e. 52.7 kW "gross". You have defined a PV system which will deliver 5.4 kW under full irradiance, corresponding to a full ...



### How High-Voltage BMS Enhance Safety and Battery ...

Mar 27, 2025 · Ensuring Battery-Monitor Accuracy A battery pack monitor can not only increase the accuracy of cell voltage measurements; it can also help improve state-of-charge ...



### What Happens If Battery Voltage Is Too High?

4 days ago · From early lab prototypes in the '90s to high-voltage systems in solar farms, I've watched lithium cells bubble, NiMH packs swell, and lead-acids hiss like angry kettles--all ...



### Understanding Overvoltage and Undervoltage in Battery ...

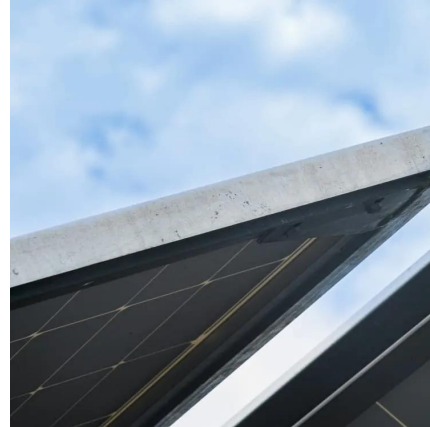
Feb 28, 2025 · What is Undervoltage in BESS? On the opposite end, undervoltage happens when the battery voltage drops below a critical threshold, often due to excessive discharging or ...





### [Battery Pack Voltage Measurement: What ...](#)

The terminal-to-ground voltage and module-to-module voltage of an instrument are important to safely measure battery cell voltage and ...

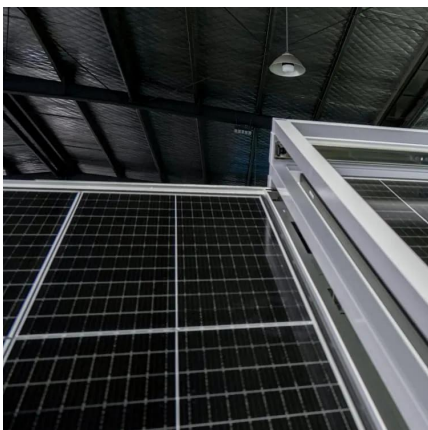
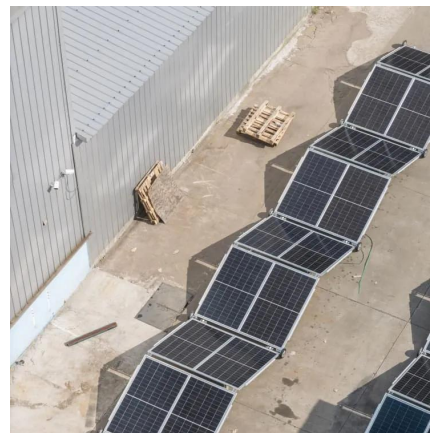


### [What Happens If Battery Voltage Is Too High?](#)

4 days ago · From early lab prototypes in the '90s to high-voltage systems in solar farms, I've watched lithium cells bubble, NiMH packs swell, and lead ...

### [what happens if battery voltage is too high](#)

Dec 8, 2023 · The effect of excessive charging voltage on the battery: 1, the charger and rechargeable battery is to match, charging voltage is too ...



### [Base station battery pack maintenance](#)

On Backup Battery Data in Base Stations of Mobile Networks: ... and the rated voltage of battery group is 53.5v, where 24 cell batteries are connected in serial as one battery group. Based on ...



## Contact Us

---

For technical specifications, project proposals, or partnership inquiries, please visit:  
<https://www.eiei.pl>

### Scan QR Code for More Information



<https://www.eiei.pl>