

# Three-phase inverter vng





## Overview

---

What is a three phase voltage source inverter?

Three-phase voltage source inverter The Three-Phase Voltage Source Inverter block implements a three-phase voltage source inverter that generates neutral voltage commands for a balanced three-phase load. Configure the voltage switching function for continuous vector modulation or inverter switch input signals.

What does a three-phase inverter convert?

The voltage source inverter (VSI) is a commonly used power inverter. It converts a DC voltage into a three-phase AC voltage. So a three-phase inverter is required.

What is a three-phase inverter used for?

It is widely used in various applications such as motor drives, renewable energy systems, and power transmission. The main function of a three-phase inverter is to control the switching of power electronic devices, typically transistors or IGBTs (Insulated Gate Bipolar Transistors), to generate three-phase AC output voltage.

What is the difference between a single phase and a three phase inverter?

Three-phase topologies distribute current across three legs rather than two, reducing RMS current per switch by  $\sqrt{3}$  for the same output power: versus single-phase: The reduced current stress allows three-phase inverters to achieve higher efficiency (typically 97-99%) compared to single-phase (94-97%) at power levels above 5kW.



## Three-phase inverter vng

---



### [Three-Phase Voltage Source Inverter](#)

The Three-Phase Voltage Source Inverter block implements a three-phase voltage source inverter that generates neutral voltage commands for a ...

### [Three-phase three-level boost inverter with self](#)

Oct 24, 2024 · In this study, we propose a novel topology for the three-level inverter. The proposed inverter has high voltage gain, self-balanced capacitor voltage, and low-voltage stress.



### **Three-Phase Inverter Design , Tutorials on Electronics , Next ...**

Dec 4, 2025 · The most common three-phase inverter topology is the Voltage Source Inverter (VSI), where a fixed DC voltage is converted into a variable AC output. The VSI employs six ...

### [Three-Phase String Inverter Systems Overview](#)

Oct 25, 2023 · A three-phase inverter system is operating at an output power level ranging from 10kW to above 300kW, used in commercial and decentralized utility-scale applications. High ...



### Three Phase VSI with 120° and 180° ...

Oct 27, 2024 · A three-phase inverter is a type of power electronic device that converts DC (Direct Current) power into AC (Alternating Current) ...



### **Modulation and control of transformerless boosting inverters for three**

Apr 23, 2025 · This paper examines the performance of three power converter configurations for three-phase transformerless photovoltaic systems. This first configuration consists of a two ...



### **Three-Phase Inverter**

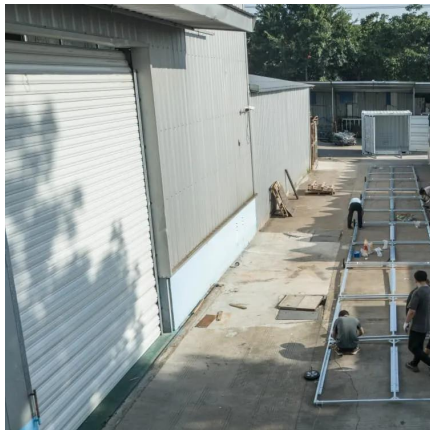
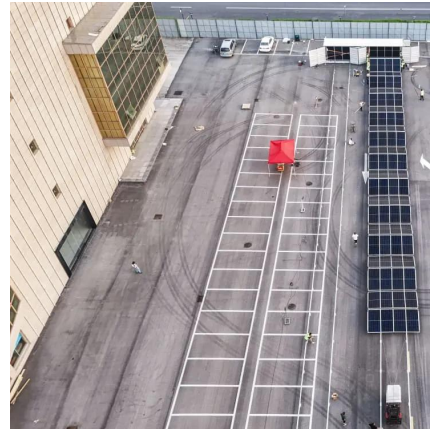
A three-phase inverter is defined as a device used to convert direct current (DC) into alternating current (AC) for medium to high power applications, typically greater than 5 kW, and is ...





## Analysis and design of an efficient three-phase voltage source inverter

May 10, 2024 · Summary The paper designs a novel efficient three-phase voltage source inverter with performance optimization. When auxiliary circuits connected in parallel with every bridge ...



### [Three-phase inverter reference design for 200-480VAC ...](#)

May 11, 2022 · This reference design uses a converter inverter brake (CIB) IGBT module to implement the three phase inverter. A CIB IGBT module has a diode based three phase ...

### [Three-Phase Voltage Source Inverter](#)

The Three-Phase Voltage Source Inverter block implements a three-phase voltage source inverter that generates neutral voltage commands for a balanced three-phase load. Configure the ...



### [Analysis and design of an efficient ...](#)

May 10, 2024 · Summary The paper designs a novel efficient three-phase voltage source inverter with performance optimization. When auxiliary ...



## Three-Phase Inverters

We will go through numerous three-phase inverter types, their essential parts, and circuit topologies in the following sections. Commonly the full-bridge topology is used for three-phase ...



## Three Phase VSI with 120° and 180° Conduction Mode

Oct 27, 2024 · A three-phase inverter is a type of power electronic device that converts DC (Direct Current) power into AC (Alternating Current) power with three phases. It is widely used in ...

## Contact Us

---

For technical specifications, project proposals, or partnership inquiries, please visit:  
<https://www.eiei.pl>

**Scan QR Code for More Information**



<https://www.eiei.pl>