

Thimphu solar container communication station wind and solar complementary generator set





Overview

What is the spatial distribution of wind and solar resources in China?

Therefore, the spatial distribution of wind and solar resources in China is basically consistent with their complementarity, which is beneficial to the development of wind and solar power and the construction of the new power system.

Where is the complementarity of wind and solar resources in China?

It can be seen from the spatial distribution that wind and solar resource complementarity is relatively high in northwest, northeast, and central China, while the complementarity in the southwest and southern areas of China is relatively low.

Does complementarity support integration of wind and solar resources?

Monforti et al. assessed the complementarity between wind and solar resources in Italy through Pearson correlation analysis and found that their complementarity can favourably support their integration into the energy system. Jurasz et al. simulated the operation of wind-solar HES for 86 locations in Poland.

Are wind and solar resources compatible with hydropower resources in China?

From this, the complementarity between wind and solar resources in China is assessed, and the trend and persistence are tested. Furthermore, the spatial compatibility between wind and solar resources and hydropower resources in China for supporting the expansion of wind and solar power is discussed.



Thimphu solar container communication station wind and solar com



5kw Wind-Solar Complementary System for Communication Base Station

Apr 4, 2007 · 5kW Hybrid Solar Wind System 1. Pitch controlled technology 2.30% electricity generated more than normal wind generator 3. Tilt up tower, easy installation 4. Mature ...

[Design of a Wind-Solar Complementary Power Generation ...](#)

Apr 27, 2025 · In order to improve the utilization efficiency of wind and photovoltaic energy resources, this paper designs a set of wind and solar complementary power generation ...

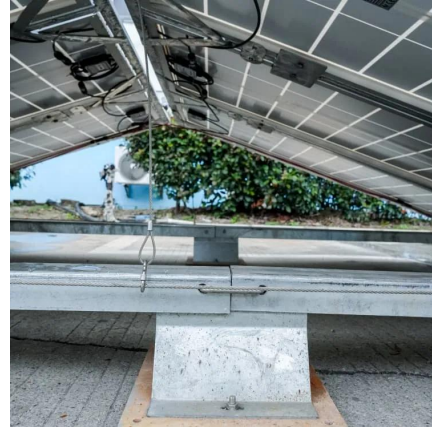


[Introduction to the Wind-Solar ...](#)

Wind-solar complementary power station is an economical and practical power station for communication base stations, microwave stations, ...

Variation-based complementarity assessment between wind and solar

Feb 15, 2023 · From this, the complementarity between wind and solar resources in China is assessed, and the trend and persistence are tested. Furthermore, the spatial compatibility ...



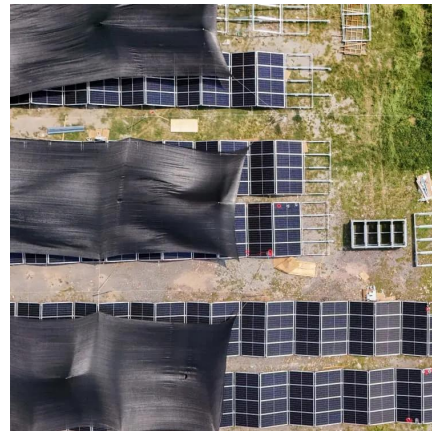
[Introduction to the Wind-Solar Complementary Power ...](#)

Wind-solar complementary power station is an economical and practical power station for communication base stations, microwave stations, border posts, remote pastoral areas, areas ...



[Communication container station energy storage systems](#)

Dec 3, 2025 · Communication container station energy storage systems (HJ-SG-R01) Product Features Supports Multiple Green Energy Sources Integrates solar, wind power, diesel ...



[Wind power energy saving , Shanghai Warner ...](#)

Wind and solar energy complementary working system well meet the power demand of the communication base station. The wind and solar hybrid ...





[Integrated Solar-Wind Power Container for Communications](#)

This large-capacity, modular outdoor base station seamlessly integrates photovoltaic, wind power, and energy storage to provide a stable DC48V power supply and optical distribution. Perfect ...



[Wind power energy saving , Shanghai Warner Telecom Co., ...](#)

Wind and solar energy complementary working system well meet the power demand of the communication base station. The wind and solar hybrid integrated power supply system uses ...

[Wind-solar hybrid for outdoor communication base ...](#)

4 days ago · Integrated Solar-Wind Power Container for Communications This large-capacity, modular outdoor base station seamlessly integrates photovoltaic, wind power, and energy ...



[Communication base station wind and solar ...](#)

Nov 27, 2025 · The wind-solar-diesel hybrid power supply system of the communication base station is composed of a wind turbine, a solar cell module, an integrated controller for hybrid ...



[Construction of wind and solar complementary ...](#)

Dec 1, 2025 · The successful grid connection of a 54-MW/100-kWp wind-solar complementary power plant in NanâEUR(TM)ao, Guangdong Province, in 2004 was the first windâEUR"solar ...



Contact Us

For technical specifications, project proposals, or partnership inquiries, please visit:
<https://www.eiei.pl>

Scan QR Code for More Information



<https://www.eiei.pl>