

The voltage of a single inverter string is negative





Overview

What is the maximum voltage a string inverter can run?

Maximum String Voltage: Ensure the total Voc does not exceed the inverter's maximum DC input voltage, typically 600V or 1000V for residential and commercial applications. **MPPT Voltage Range:** The inverter operates efficiently when the Vmp of the string falls within its MPPT range (e.g., 250-850V for utility-scale inverters).

How do you calculate a voltage rating for an inverter?

Simply divide the inverter's maximum system voltage rating by the open circuit voltage (Voc) of the module used and you're good. Well, that does get you in the ballpark, however, you could be at risk of over-sizing or under-sizing the number of modules in a string depending on where you are located in the world.

What is a single-phase string inverter system?

Single-phase string inverter systems convert the DC power generated by the photovoltaic (PV) panel arrays into the AC power fed into a 120 V / 220 V single-phase grid connection. The power rating typically ranges from 1kW to 10kW and is primarily used in residential market. The system's main components handle the DC-AC conversion.

How many modules can a series inverter have?

The maximum number of modules in series can be as much as 11. Now we have all the parameters that we need to design a system which will not go over the maximum input voltage of the inverter at record lows and will meet the minimum start-up voltage of the inverter where cell temps are at their highest.



The voltage of a single inverter string is negative

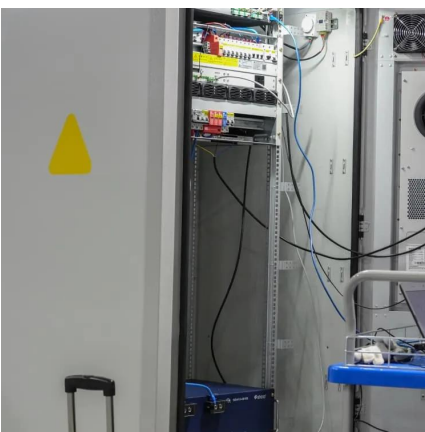


String Voltage and Current Calculation for Different Solar ...

Mar 14, 2025 · When designing a solar photovoltaic (PV) system, calculating string voltage and current is crucial for ensuring compatibility with inverters and maximizing efficiency. A well ...

[Power Inverters: What Are They & How Do ...](#)

Dec 17, 2019 · What is an Inverter? An inverter (or power inverter) is defined as a power electronics device that converts DC voltage into AC voltage. ...



[DC Voltage Test \(Completed String and Polarity\)](#)

Sep 26, 2025 · The voltage of a combined string is typically equal to the sum of the two individual string voltages after they've been paralleled. For ...

[MCI and PV String Issues](#)

Sep 26, 2025 · MCI and PV String Issues Perform Insulation Resistance Test to Identify Faulty String Determine True String VOC DC Voltage Test ...



[Solar Inverter String Design Calculations](#)

2 days ago · For many new to photovoltaic system design, determining the maximum number of modules per series string can seem straight forward, ...



[Inverter Underproduction / No Production \(Causes and ...\)](#)

If one string under a shared MPPT is partially shaded, its voltage will drop below that of unshaded strings. This voltage difference can cause current to backfeed from the higher-voltage strings ...



[String Inverter: What It Is, How It Works, and ...](#)

Jun 11, 2025 · Conclusion The string inverter remains one of the most reliable and efficient components in modern solar installations. Understanding ...





[What is a String Solar Inverter and How Does it Work?](#)

Solar string inverters are electrical devices that convert the direct current (DC) generated by solar panels into alternating current (AC) that businesses can use. They are usually installed in a ...



[MCI and PV String Issues](#)

Sep 26, 2025 · MCI and PV String Issues Perform Insulation Resistance Test to Identify Faulty String Determine True String VOC DC Voltage Test (Completed String and Polarity) MCI ...

[String Voltage and Current Calculation for ...](#)

Mar 14, 2025 · When designing a solar photovoltaic (PV) system, calculating string voltage and current is crucial for ensuring compatibility with ...



[Single-Phase String Inverter Systems Overview](#)

Oct 13, 2023 · When the PV string reaches the DC link operating voltage level, the DC-DC converter is bypassed (via a low VF diode) to maximize efficiency. To ensure reliability and ...



[Solar panel wiring basics: An intro to how to ...](#)

Oct 15, 2019 · Solar panel wiring (aka stringing), and how to string solar panels together, is a fundamental topic for any solar installer. You need to ...

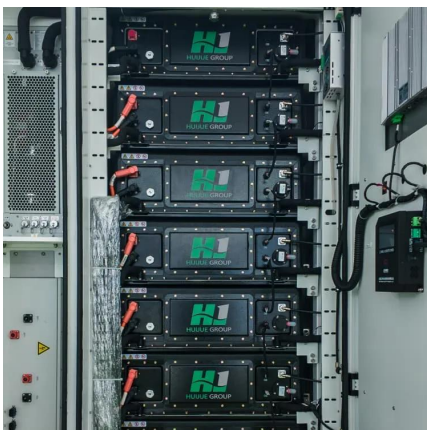


[When to Fuse, When not to Fuse for Solar ...](#)

Sep 2, 2019 · Single-phase inverters of below 6 kW and three-phase inverters of below 10 kW generally use two MPPT loops. Each MPPT loop ...

[How to Detect Ground Faults in Your PV ...](#)

Sep 15, 2025 · Share this article: Share via Email
How to Detect Ground Faults in Your PV System
Introduction: Ground faults in PV systems are ...



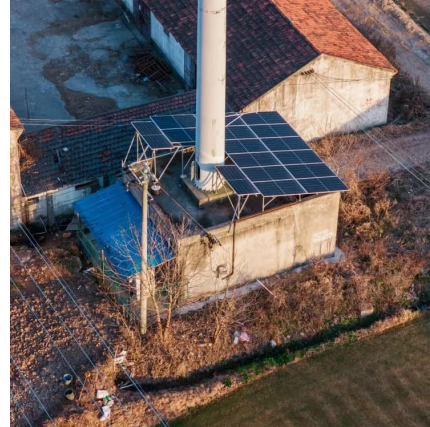
[Common faults and solutions of inverters](#)

1 day ago · Solution: Check the parameters of the inverter, determine the input range of the DC voltage, and then measure whether the open circuit voltage of the string is within the allowable ...



[How to Troubleshoot the Wrong Wired On ...](#)

Aug 28, 2019 · The inverter A phase will display the line voltage of 380V. B and C will display the phase voltage of 220V. The grid connected inverter ...

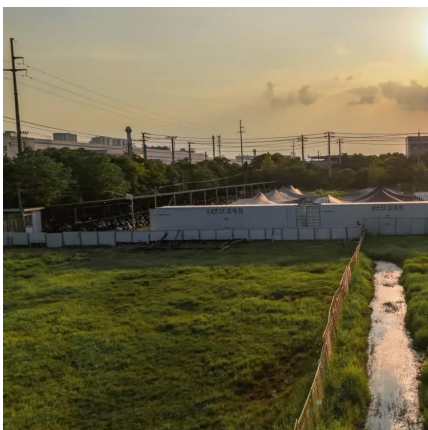
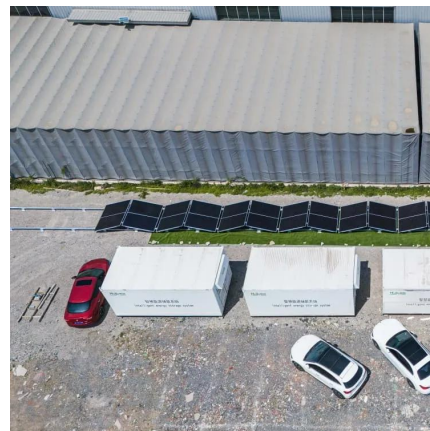


[String Inverter: Advantages and Disadvantages](#)

Nov 16, 2022 · During the inverter's operation, the DC power received from each solar panel is combined and, at the same time, converted into AC power. The number of solar panels that ...

[Solar Inverter String Design Calculations](#)

2 days ago · For many new to photovoltaic system design, determining the maximum number of modules per series string can seem straight forward, right? Simply divide the inverter's ...



[Solar Inverter String Design Calculations](#)

Dec 12, 2023 · 2. No. of solar panels in the series string: When solar panels are wired in series strings (that is the positive of one panel is connected to the negative of the next panel), the ...



Industry Testing Methods for PV Modules and Strings

Open Circuit Test An open circuit test can be performed to measure the open circuit voltage of the module or the string. The test requires a DC voltage meter, and it helps to detect intermittent ...



Solis Seminar ?Episode 55?: Using the piecewise method...

Sep 15, 2023 · Under normal circumstances, the absolute value of the voltage to ground at the positive or negative terminals should be between 100 ~ 1000 V, gradually dropping within 20V ...

Test PV Strings with MCIs

Sep 6, 2025 · The following tests are performed on each PV string to confirm the PV wiring has been installed correctly and the array is functioning as expected: Verify PV String Polarity: ...



Single Phase Inverter

Jul 23, 2025 · Single Phase Inverter A single-phase inverter is a type of inverter that converts DC source voltage into single-phase AC output ...



Contact Us

For technical specifications, project proposals, or partnership inquiries, please visit:
<https://www.eiei.pl>

Scan QR Code for More Information



<https://www.eiei.pl>