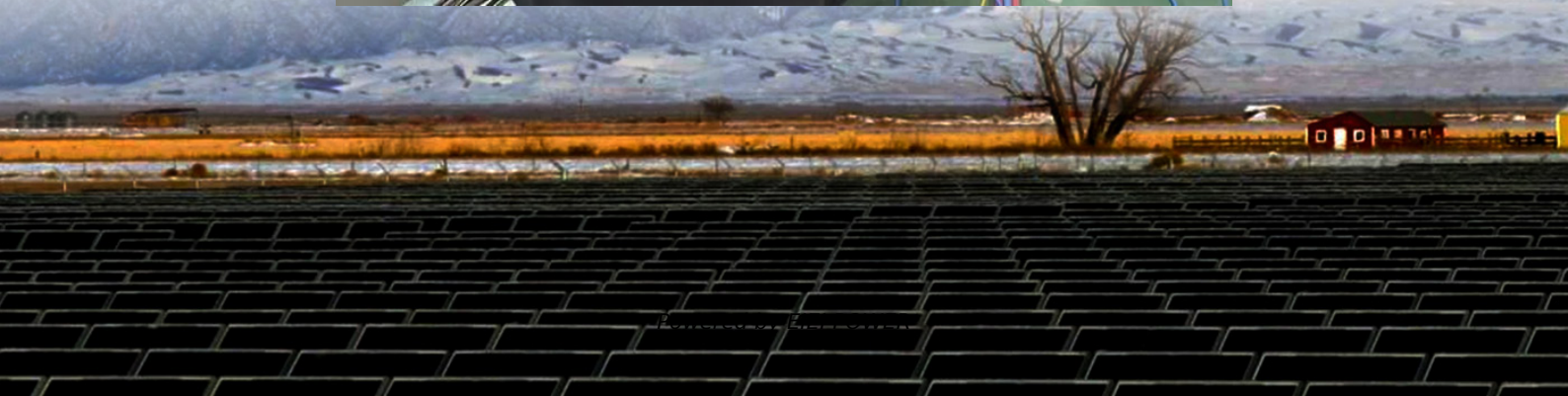
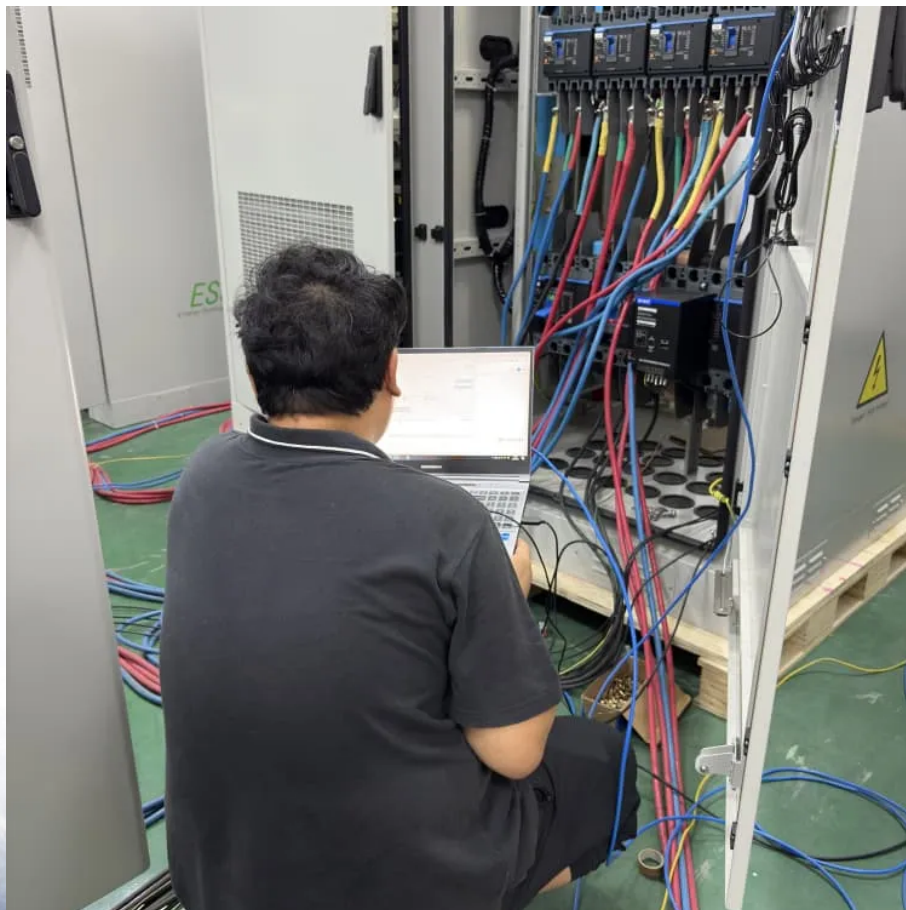


# **The solar container communication station wind and solar complementary installation project includes**





## Overview

---

Can a multi-energy complementary power generation system integrate wind and solar energy?

Simulation results validated using real-world data from the southwest region of China. Future research will focus on stochastic modeling and incorporating energy storage systems. This paper proposes constructing a multi-energy complementary power generation system integrating hydropower, wind, and solar energy.

Are multi-energy complementary systems effective in ensuring power supply to the grid?

This validates the effectiveness of multi-energy complementary systems in ensuring power supply to the grid. Additionally, it can be deduced that the ratio of maximum integrable wind and solar capacity to hydropower capacity increases with the increase in hydropower capacity.

Is a multi-energy complementary wind-solar-hydropower system optimal?

This study constructed a multi-energy complementary wind-solar-hydropower system model to optimize the capacity configuration of wind, solar, and hydropower, and analyzed the system's performance under different wind-solar ratios. The results show that when the wind-solar ratio is 1.25:1, the overall system performance is optimal.

Can a solar-wind system meet future energy demands?

Accelerating energy transition towards renewables is central to net-zero emissions. However, building a global power system dominated by solar and wind energy presents immense challenges. Here, we demonstrate the potential of a globally interconnected solar-wind system to meet future electricity demands.



## The solar container communication station wind and solar complem



### 5kw Wind-Solar Complementary System for Communication Base Station

Apr 4, 2007 · 5kW Hybrid Solar Wind System 1. Pitch controlled technology 2.30% electricity generated more than normal wind generator 3. Tilt up tower, easy installation 4. Mature ...

### [Optimal Design of Wind-Solar complementary power ...](#)

Dec 15, 2024 · The results indicate that a wind-solar ratio of around 1.25:1, with wind power installed capacity of 2350 MW and photovoltaic installed capacity of 1898 MW, results in ...



### [Communication base station wind and solar ...](#)

Nov 21, 2025 · The wind-solar-diesel hybrid power supply system of the communication base station is composed of a wind turbine, a solar cell module, an integrated controller for hybrid ...



### [COMMUNICATION BASE STATION WIND AND SOLAR COMPLEMENTARY](#)

The article covers the key specifications of solar panels, including power output, efficiency, voltage, current, and temperature coefficient, as presented in solar panel datasheets, and ...



### ASSESSING THE POTENTIAL AND COMPLEMENTARY

The invention relates to a communication base station stand-by power supply system based on an activation-type cell and a wind-solar complementary power supply system.



### **solar power system, off grid power system, hybrid inverter, wind**

The system configuration of the communication base station wind solar complementary project includes wind turbines, solar modules, communication integrated control cabinets, battery ...



### Communication base station wind and solar ...

Nov 27, 2025 · The wind-solar-diesel hybrid power supply system of the communication base station is composed of a wind turbine, a solar cell module, an integrated controller for hybrid ...





## [Globally interconnected solar-wind system ...](#)

May 15, 2025 · A globally interconnected solar-wind power system can meet future electricity demand while lowering costs, enhancing resilience, and ...



## [Construction of wind and solar complementary ...](#)

Dec 1, 2025 · The successful grid connection of a 54-MW/100-kWp wind-solar complementary power plant in NanâEUR(TM)ao, Guangdong Province, in 2004 was the first windâEUR"solar ...

## **Globally interconnected solar-wind system addresses future ...**

May 15, 2025 · A globally interconnected solar-wind power system can meet future electricity demand while lowering costs, enhancing resilience, and supporting a stable, sustainable ...



## **solar power system, off grid power system, hybrid inverter, ...**

The system configuration of the communication base station wind solar complementary project includes wind turbines, solar modules, communication integrated control cabinets, battery ...



## COMMUNICATION BASE STATION WIND TURBINE SOLAR ...

Uzbekistan installs wind and solar hybrid communication base station As part of the implementation of the Voltalia project to build the first hybrid solar and wind power station with ...



## Contact Us

---

For technical specifications, project proposals, or partnership inquiries, please visit:  
<https://www.eiei.pl>

## Scan QR Code for More Information



<https://www.eiei.pl>