

The inverter is equivalent to a controllable voltage source





Overview

What is a voltage source inverter?

A Voltage Source Inverter (VSI) is a type of power electronic device that converts a fixed DC voltage into a variable AC voltage with controllable frequency and amplitude. VSIs are characterized by their ability to supply a stable DC voltage to the inverter circuit while regulating the output AC voltage according to the desired specifications.

What is voltage source inverter with pre-charge?

The demo model “Voltage Source Inverter with Pre-Charge” includes DC-link pre-charging resistors connected to the three-phase source to limit the inrush current at startup. The inverter is controlled with an outer voltage control loop and an inner current control loop. The DC-link voltage is measured and compared against a voltage set point.

Why do we need a current source inverter?

Thus, in improving the cost and life expectancy of the power electronic interface, a current source inverter is an alternative which offers short-circuit protection capabilities, implicit voltage boosting and a simple ac-side filter structure.

What is a self commutated inverter?

Thus, an inverter is a device that converts DC to AC. Self-commutated inverters are classified as current source inverters and voltage source inverters. A voltage source inverter is a device that converts its voltage from DC form to AC form. It can be represented in a single phase or in 3 phases.



The inverter is equivalent to a controllable voltage source

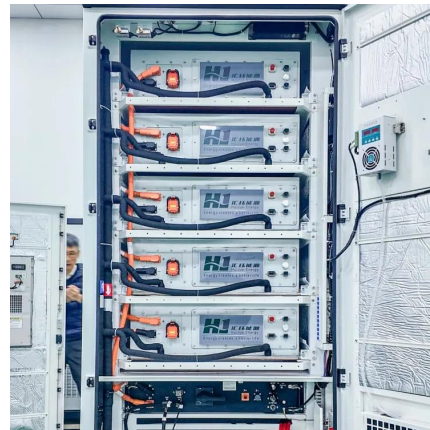


[Current-Controlled Voltage Source Inverter](#)

In the current, widely used current-controlled voltage-source inverters, the inverter output ac current is normally controlled in order to control the active and reactive power output of the ...

[Voltage Source Inverter : Construction, Phases & Its ...](#)

Finally, the paper describes the performance evaluation of the control schemes on a voltage source inverter (VSI) and proposes the different aspects to be considered for selecting a ...



[PQ Mode · ElectricGrid.jl](#)

Oct 5, 2023 · The control structure of power electronic inverters can be divided into cascading levels. The lowest of these employed in the package is an "inner" current control loop, on top ...

[The inverter is equivalent to a controllable voltage source](#)

About The inverter is equivalent to a controllable voltage source video introduction Our solar industry solutions encompass a wide range of applications from residential rooftop installations

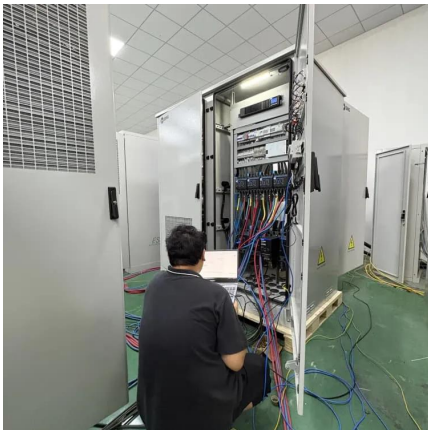


...



[Voltage Source Inverter \(VSI\) : Know ...](#)

A Voltage Source Inverter (VSI) is a type of power electronic device that converts a fixed DC voltage into a variable AC voltage with controllable ...



[Voltage Source Inverter \(VSI\) Operation](#)

1 day ago · The article provides an overview of Voltage Source Inverter (VSI) operation, discussing its working principle, waveform generation, ...



[Voltage Source Inverter \(VSI\) : Know Definition, Working, ...](#)

A Voltage Source Inverter (VSI) is a type of power electronic device that converts a fixed DC voltage into a variable AC voltage with controllable frequency and amplitude. VSIs are ...





[Voltage Source Inverter \(VSI\) Operation, Electrical Academia](#)

1 day ago · The article provides an overview of Voltage Source Inverter (VSI) operation, discussing its working principle, waveform generation, switching patterns, and harmonic effects.



Comparative analysis between voltage and current source inverters

...

Sep 8, 2011 · The voltage source inverter is mainly used for grid interfacing of distributed generation systems. In order to boost the voltage of a renewable energy source to the required ...

[PQ Mode · ElectricGrid.jl](#)

Oct 5, 2023 · The control structure of power electronic inverters can be divided into cascading levels. The lowest of these employed in the ...



[PQ Control of Micro Grid Inverters with Axial Voltage ...](#)

The 1st regulator involves the output voltage amplitude and output impedance, while the 2nd regulator controls the output frequency. The inverter system is equivalent to a controllable ...



Voltage Source Inverter : Construction, Phases & Its ...

The external commutation inverters, acquire sources externally from motors or power supply and the self-commutated inverters control the circuit with the help of capacitor function. Self ...



Digital Control Techniques Based on Voltage Source Inverters ...

Finally, the paper describes the performance evaluation of the control schemes on a voltage source inverter (VSI) and proposes the different aspects to be considered for selecting a ...

Voltage Source Inverter

Feb 13, 2024 · 2.1 Electrical model A stiff three-phase voltage source with line inductance is connected to the AC-side of a 2-level IGBT converter. The DC-side of the inverter is ...



Contact Us

For technical specifications, project proposals, or partnership inquiries, please visit:
<https://www.eiei.pl>



Scan QR Code for More Information



<https://www.eiei.pl>