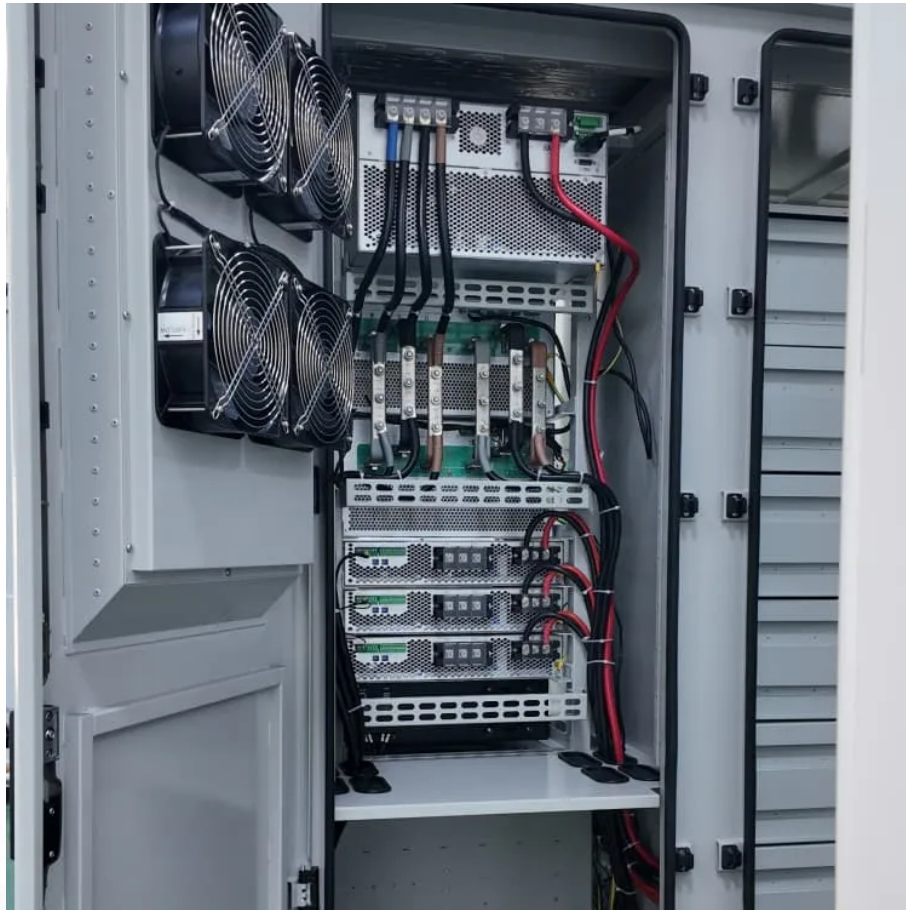


The digital container is composed of a base station





Overview

What is a base station in a telecommunications network?

A base station is a critical component in a telecommunications network. A fixed transceiver that acts as the central communication hub for one or more wireless mobile client devices. In the context of cellular networks, it facilitates wireless communication between mobile devices and the core network.

What is a base transceiver station?

One key component in mobile networks is the Base Transceiver Station, often abbreviated as BTS. But what is base transceiver station, and why is it so crucial to the functioning of our mobile phones?

At its core, a BTS is the equipment that facilitates wireless communication between the mobile network and your phone.

How does a base station work?

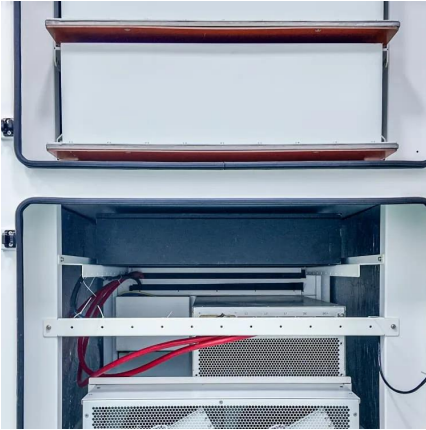
It not only connects wireless devices to each other but also links them to other networks or devices, often through dedicated high-bandwidth wired or fiber optic connections. Most base stations function as transceivers, meaning they are capable of both sending and receiving wireless signals.

What is a base station subsystem (BSS)?

GSM - The Base Station Subsystem (BSS) The BSS is composed of two parts – The Base Transceiver Station (BTS) The Base Station Controller (BSC) The BTS and the BSC communicate across the specified Abis interface, enabling operations between components that are made by different suppliers.



The digital container is composed of a base station

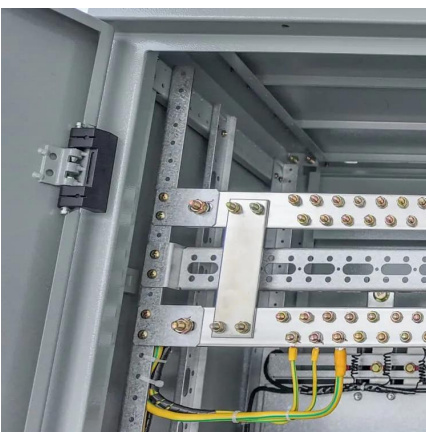


GSM

Jul 28, 2021 · The Base Transceiver Station BTS
The BTS houses the radio transceivers that define a cell and handles the radio link protocols with the MS. In a large urban area, a large ...

Understanding the Basics: What is a Base Transceiver Station?

Aug 19, 2024 · A Base Transceiver Station (BTS) is composed of several key hardware elements, each playing a vital role in its operation. First and foremost is the antenna system, which ...



Base Stations

Jul 23, 2025 · What is Base Station? A base station represents an access point for a wireless device to communicate within its coverage area. It usually connects the device to other ...

gsm base station

Nov 30, 2023 · A GSM (Global System for Mobile Communications) base station, also known as a BTS (Base Transceiver Station), is a critical



component in a GSM cellular network. It provides ...



What is a Base Station Subsystem?

Dec 1, 2025 · A Base Station Subsystem (BSS) is a critical component in mobile telecommunications that manages the radio communication between mobile devices and the ...

What is a Base Station in Telecommunications?

What is a Base Station? A base station is a critical component in a telecommunications network. A fixed transceiver that acts as the central communication hub for one or more wireless mobile ...



What is a Base Station Subsystem? Your Cell Signal Explained

Aug 12, 2025 · The Core Components of a Base Station Subsystem The BSS is not a single piece of equipment but is made up of two main components that work in tandem: the Base ...





What Is A Base Station?

Apr 22, 2024 · A base station is an integral component of wireless communication networks, serving as a central point that manages the transmission and reception of signals between ...



What is a Base Station in ...

What is a Base Station? A base station is a critical component in a telecommunications network. A fixed transceiver that acts as the central ...

Understanding the Basics: What is a Base ...

Aug 19, 2024 · A Base Transceiver Station (BTS) is composed of several key hardware elements, each playing a vital role in its operation. First and ...



What is Telecommunication Base Station

Most people think that the towering iron tower is the entirety of the base station, but in fact, it is just the tower and antenna, just a component of ...



[What is Telecommunication Base Station , China Hop](#)

Most people think that the towering iron tower is the entirety of the base station, but in fact, it is just the tower and antenna, just a component of the base station. In addition to these visible ...



Base Stations

Jul 23, 2025 · What is Base Station? A base station represents an access point for a wireless device to communicate within its coverage area. It ...

[GSM Network Architecture: BSS, BTS, BSC Explained](#)

GSM - The Base Station Subsystem (BSS) The BSS is composed of two parts - The Base Transceiver Station (BTS) The Base Station Controller (BSC) The BTS and the BSC ...





Contact Us

For technical specifications, project proposals, or partnership inquiries, please visit:
<https://www.eiei.pl>

Scan QR Code for More Information



<https://www.eiei.pl>