

# Temperature difference wind power generation system





## Overview

---

Why is wind power generation correlated with temperature?

Similarly, wind power generation exhibits seasonal variations correlated with temperature. In most parts of China, due to the influence of Asian high pressure, high power and high wind are more likely to occur in cold winter, while the wind speed is low in summer.

Does temperature affect wind power output?

Firstly, the influence of temperature on wind power output is analyzed via Pearson coefficient to obtain the correlation between wind power and temperature.

How is wind power output based on the historical wind power curve?

Secondly, based on the historical wind power curve, a large number of wind power output scenarios are randomly generated while fully preserving its characteristics, and probabilistic supply-demand analysis is carried out.

Is a stochastic and extreme scenario generation method suitable for wind power?

In the context of large-scale wind power access to the power system, it is urgent to explore new probabilistic supply-demand analysis methods. This paper proposes a wind power stochastic and extreme scenario generation method considering wind power-temperature correlations and carries out probabilistic supply-demand balance analysis based on it.



## Temperature difference wind power generation system

---



### [Effect of temperature on seasonal wind power and energy ...](#)

Oct 9, 2024 · In the Nordic countries, where temperature differences of over 50°C are commonly experienced between seasons, understanding the effect of temperature on peak wind power ...

### [How do the seasons of the year affect wind ...](#)

The temperature difference between the cold ground and the air layers creates strong wind currents ideal for power generation. In many regions, ...



### [Daily Variation and Regional Differences in ...](#)

Sep 19, 2023 · By comparison, the daily cumulative wind power generation increases significantly on CW days, and the monthly distribution of CW ...

### [Modeling Wind-Turbine Power Curves: Effects ...](#)

Sep 21, 2020 · Modeling Wind-Turbine Power Curves: Effects of Environmental Temperature on Wind Energy Generation



### How do the seasons of the year affect wind energy ...

The temperature difference between the cold ground and the air layers creates strong wind currents ideal for power generation. In many regions, it is the season with the highest energy

...



### Daily Variation and Regional Differences in Wind Power ...

Sep 19, 2023 · By comparison, the daily cumulative wind power generation increases significantly on CW days, and the monthly distribution of CW days is expected to undergo notable changes ...



### Lifetime improvement for wind power generation system ...

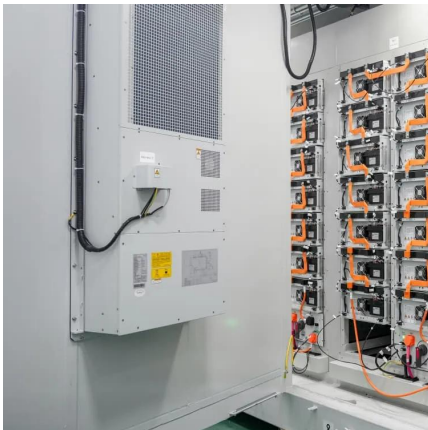
Mar 15, 2021 · Results show that the consumed lifetime reduced by each application of temperature control is  $6.04 \times 10^{-3} \%$ . The expected lifetime of power module is extended from ...





### [Design of micro temperature difference power ...](#)

Sep 1, 2023 · The temperature difference power generation system consists of three parts: a temperature sensor to detect the temperature, a storage liquid or liquid mixture which is used ...

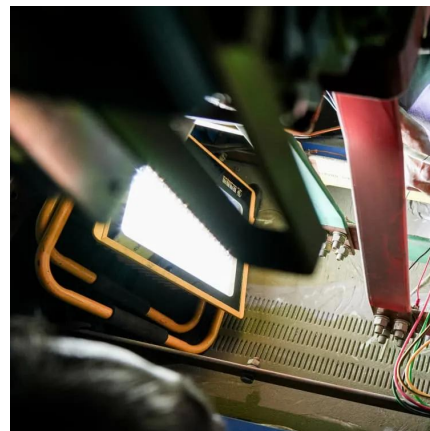


### **Research on temperature difference power generation system ...**

Oct 16, 2024 · This paper designs a temperature difference power generation system based on the Seebeck effect, tests the power that can be generated by the system under different ...

### **Cold energy temperature difference wind power generation system**

A technology of wind power generation system and temperature difference, which is applied in wind power generation, wind turbines, wind turbine combinations, etc., can solve the problems ...



### **Stochastic and Extreme Scenario Generation of Wind Power ...**

May 27, 2024 · In the context of large-scale wind power access to the power system, it is urgent to explore new probabilistic supply-demand analysis methods. This paper proposes a wind ...



## [Stochastic and Extreme Scenario Generation of Wind ...](#)

May 27, 2024 · In the context of large-scale wind power access to the power system, it is urgent to explore new probabilistic supply-demand analysis methods. This paper proposes a wind ...



## [Effect of temperature on seasonal wind power and energy ...](#)

Oct 9, 2024 · A major obstacle standing in the way of full-scale adoption of renewable energy sources is their intermittency and seasonal variability. To better understand the power ...

## [Modeling Wind-Turbine Power Curves: Effects of ...](#)

Sep 21, 2020 · Modeling Wind-Turbine Power Curves: Effects of Environmental Temperature on Wind Energy Generation



## Contact Us

---

For technical specifications, project proposals, or partnership inquiries, please visit:  
<https://www.eiei.pl>



## Scan QR Code for More Information



<https://www.eiei.pl>