

Special carbon brush for power station generator





Overview

What is a generator carbon brush?

A generator carbon brush serves as the critical electrical bridge in power generation systems. These specialized components, typically made from carbon graphite or metal-graphite materials, maintain continuous electrical contact between the stationary components and rotating elements like slip rings or the commutator surface.

Which carbon brushes are best for a generator & alternator?

Mersen's generators and alternators carbon brushes (LFC554 grades, CG626 and CG677 grades) Mersen offers a wide range of carbon brushes for medium and high-speed applications. For turbogenerators, our LFC brush grades are internationally renowned, especially LFC554 grades.

What material should a generator carbon brush be made of?

The right material selection is key to the efficiency and service life of generator carbon brushes. Depending on the application, materials such as metal graphite or electrographite are used.

What is a carbon brush?

Unlike simple wire connections, carbon brushes are engineered to withstand the demanding conditions inside generators and electric motor assemblies. Their unique composition allows them to conduct electrical current while providing self-lubricating properties that reduce friction and wear on rotating surfaces.



Special carbon brush for power station generator



[Best Generator Carbon Brushes: Reliable Replacement Options](#)

Oct 10, 2025 · Choosing high-quality carbon brushes is essential for maintaining generator performance and longevity. This guide highlights top replacement options and practical buying ...

[carbon-brushes-for-motors-and-generators-mersen-1605](#)

Jul 1, 2024 · The carbon brush has to be guided by a brush-holder of sufficient height and with an adequate clearance to avoid either the brush getting stuck or the brush rattling in the holder.



[Carbon brushes for Generators & alternators](#)

Carbon Brushes for Generators & Alternators Ensure Reliable Power Generation with High-Performance Carbon Brushes Generators and alternators are critical components in power ...



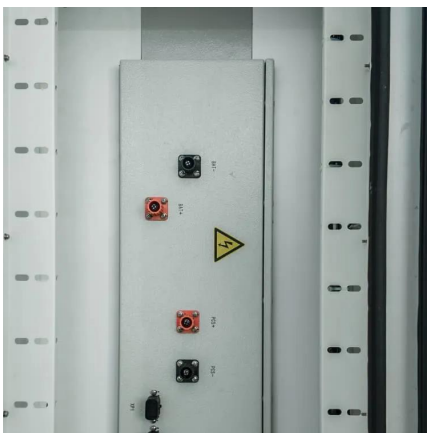
[Carbon brushes , Schunk Carbon Technology](#)

High-quality carbon brushes keep industrial systems and household appliances running smoothly. As sliding contacts, they are essential for ...



[High-Performance Carbon Brushes for Generators: Enhanced ...](#)

The carbon brush effectively bridges the gap between the commutator or slip rings and the external circuit, facilitating smooth power transfer during generator operation. Modern carbon ...



[Generator Carbon Brush Guide: Selection, Maintenance Tips](#)

Jun 3, 2025 · A generator carbon brush serves as the critical electrical bridge in power generation systems. These specialized components, typically made from carbon graphite or metal ...



[Carbon brushes for Generators & alternators](#)

1 day ago · Generator, turbogenerator and alternator carbon brushes Mersen offers a wide range of carbon brushes for medium and high-speed applications. For turbogenerators, our LFC ...





[Carbon brushes , Schunk Carbon Technology](#)

High-quality carbon brushes keep industrial systems and household appliances running smoothly. As sliding contacts, they are essential for the safe transmission of electrical current between ...



[Carbon brushes for Generators & alternators](#)

Carbon Brushes for Generators & Alternators Ensure Reliable Power Generation with High-Performance Carbon Brushes Generators and ...

[Carbon Brush for Generators , Schunk Carbon ...](#)

Robust carbon brushes for generators in wind power, power plants, and industry. Request the right solution now--precisely manufactured for ...



[NCC634 Carbon Brushes For Thermal Power ...](#)

NCC634 Carbon Brushes For Thermal Power Stations NCC634 carbon brushes are made from nature graphite material. NCC634 carbon brush ...



[Carbon brushes for Generators & alternators](#)

1 day ago · Generator, turbogenerator and alternator carbon brushes Mersen offers a wide range of carbon brushes for medium and high-speed ...



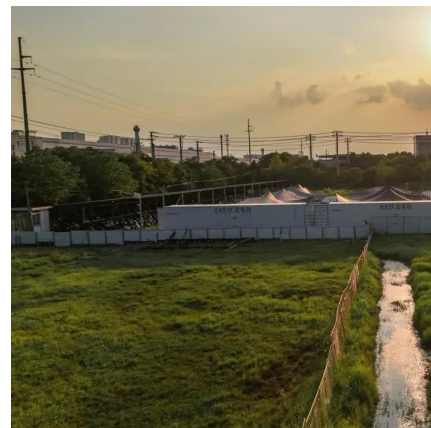
[Carbon Brush for Generators , Schunk Carbon Technology](#)

Robust carbon brushes for generators in wind power, power plants, and industry. Request the right solution now--precisely manufactured for maximum performance.



[Premium Generator Carbon Brushes for AC & DC Motors](#)

Types of Generator Carbon Brushes A generator carbon brush is a vital electrical component used in generators, motors, and other rotating machinery to conduct current between ...





[NCC634 Carbon Brushes For Thermal Power Stations](#)

NCC634 Carbon Brushes For Thermal Power Stations NCC634 carbon brushes are made from nature graphite material. NCC634 carbon brush has resistivity of 18, flexural strength of 5.2, ...

Contact Us

For technical specifications, project proposals, or partnership inquiries, please visit:
<https://www.eiei.pl>

Scan QR Code for More Information



<https://www.eiei.pl>