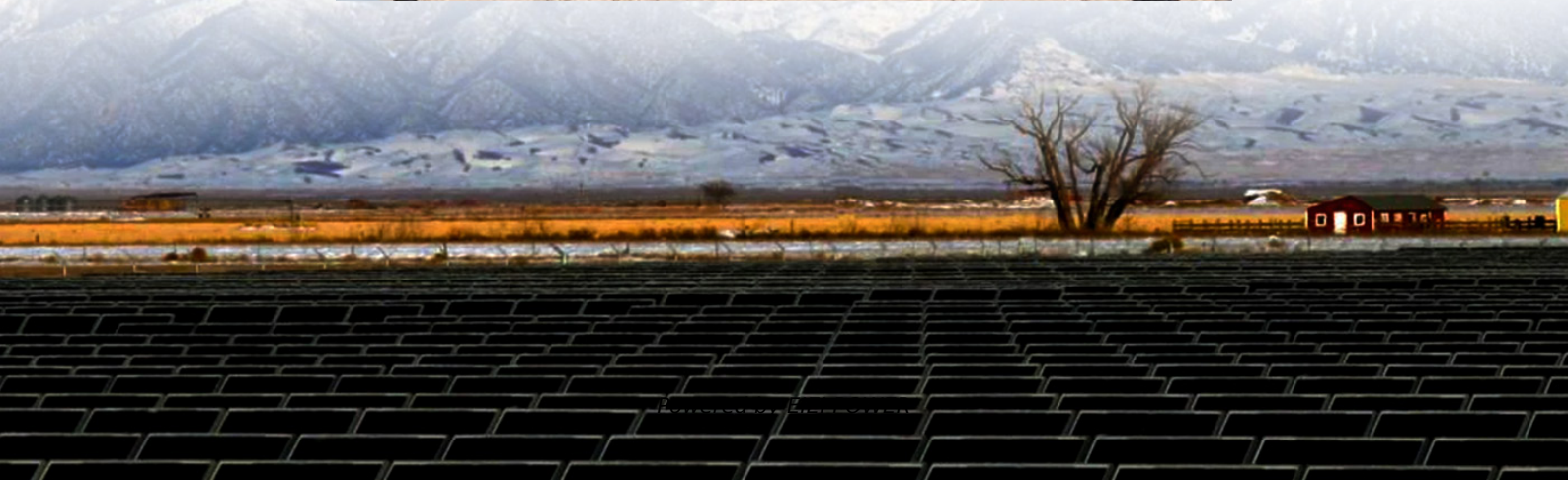


Somaliland BMS Battery Management Power System Enterprise





Overview

What is a battery management system (BMS)?

Battery management systems (BMSs) are discussed in depth, as are their applications in EVs and renewable energy storage systems. This review covered topics ranging from voltage and current monitoring to the estimation of charge and discharge, protection, equalization of cells, thermal management, and actuation of stored battery data.

What is a BMS used for?

A Battery Management System (BMS) is widely used in various applications such as electric vehicles (EVs), energy storage systems (ESS), uninterruptible power supplies (UPS), and industrial battery applications.

What are the applications of battery management systems?

In general, the applications of battery management systems span across several industries and technologies, as shown in Fig. 28, with the primary objective of improving battery performance, ensuring safety, and prolonging battery lifespan in different environments . Fig. 28. Different applications of BMS. 5. BMS challenges and recommendations.

How do BMS devices interact with power conversion systems (PCs)?

4. Communication Management BMS devices commonly interact with Power Conversion Systems (PCS), Energy Management Systems (EMS), or other equipment through interfaces like CAN bus or Modbus. In more complex setups, wireless communication offers remote monitoring, crucial for extensive battery banks or hard-to-reach locations.



Somaliland BMS Battery Management Power System Enterprise



[Whitepaper: Understanding Battery Management ...](#)

Jan 1, 1980 · At the heart of this effort lies the Battery Management System (BMS), an electronic system designed to monitor and manage the performance of rechargeable batteries. This ...

[Somaliland BMS Battery Management Power System Enterprise](#)

What is a battery management system (BMS)? Battery management systems (BMSs) are discussed in depth, as are their applications in EVs and renewable energy storage systems. ...



[Somalia largest battery energy storage system](#)

Battery Management System (BMS): A system that manages the charging and discharging of batteries, ensuring the safety and efficiency of the storage system. Power Conversion System ...

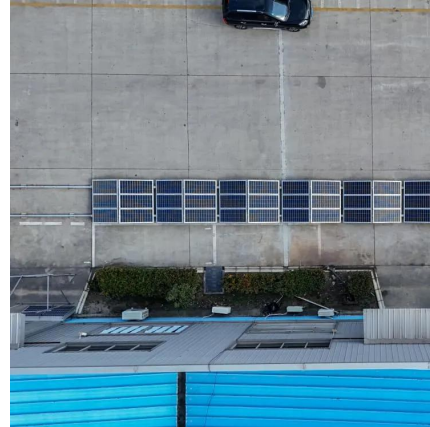


[Battery Management System \(BMS\) Detailed Explanation: ...](#)

May 7, 2025 · Battery Management System (BMS) is the "intelligent manager" of modern battery packs, widely used in fields such as electric vehicles, energy storage stations, and



consumer ...



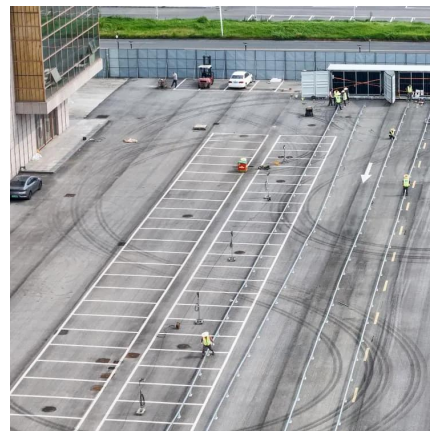
[Battery Management System \(BMS\) Detailed ...](#)

May 7, 2025 · Battery Management System (BMS) is the "intelligent manager" of modern battery packs, widely used in fields such as electric ...



[Understanding BMS \(Battery Management System\): The ...](#)

Nov 11, 2025 · Discover how an advanced Battery Management System (BMS) is the critical brain behind lithium-ion batteries, enhancing safety, maximizing performance, and extending ...



[SOMALILAND LITHIUM BATTERY NETWORK](#)

The battery management system (BMS) maintains continuous surveillance of the battery's status, encompassing critical parameters such as voltage, current, temperature, and state of charge ...





[Battery Management Systems \(BMS\): A Complete Guide](#)

Mar 6, 2025 · A Battery Management System (BMS) is essential for ensuring the safe and efficient operation of battery-powered systems. From real-time monitoring and cell balancing to thermal ...



[Understanding Battery Management Systems \(BMS\): ...](#)

Jan 18, 2025 · Explore how Battery Management Systems (BMS) optimize battery performance, ensure safety, and enable efficient energy storage. Learn about key features, architectures, ...

[BMS Battery Management system EV Energy Storage](#)

Mar 6, 2025 · Battery Management System (BMS) role in battery packs and energy storage system is critical to ensure safe operation and extend lifetime.



A review of battery energy storage systems and advanced battery

May 1, 2024 · Battery management systems (BMS) are crucial to the functioning of EVs. An efficient BMS is crucial for enhancing battery performance, encompassing control of charging ...



Contact Us

For technical specifications, project proposals, or partnership inquiries, please visit:
<https://www.eiei.pl>

Scan QR Code for More Information



<https://www.eiei.pl>