

Solar power station transmission power generator





Overview

Will new electric transmission facilities be required for new solar power plants?

New electric transmission facilities might be required for some new solar energy power plants. Electric power transmission is the process by which large amounts of electricity produced at power plants, such as industrial-scale solar facilities, is transported over long distances for eventual use by consumers.

What is electric power transmission?

Electric power transmission is the process by which electricity is transported over long distances to consumers. New electric transmission facilities might be required for some new solar energy power plants.

How does a solar power plant work?

A solar (PV) plant consisting of arrays will output power to a grid-tied power substation. The output of the plant is 60 MW. The solar power plant will produce DC current which is routed through a set of series/parallel conductors to an inverter. The inverter outputs three phase AC current to a step-up transformer.

How does a solar substation work?

Finally, it is fed to the grid at 115 kV. The purpose of the substation is to collect all solar array power and feed into the grid after stepping up voltage to distribution level. This substation is based on an Arcadia design, modified for the project. Power flow is bottom to top, 34.5 kV bus to 115 kV bus.



Solar power station transmission power generator



Jackery HomePower 3600 Plus Portable Power Station with 2x 200W Solar

Aug 19, 2025 · It also supports charging via AC in 2.5 hours, solar in 4 hours, or a gas generator in 2.5 hours --delivering a full day of quiet, clean energy. Ultra-Portable & Lightweight: The ...

60 MW grid tied solar power plant with 115 kV/34.5 kV substation ...

Apr 21, 2025 · System Power Flow A solar (PV) plant consisting of arrays will output power to a grid-tied power substation. The output of the plant is 60 MW. The solar power plant will ...



[Solar Power Plants: Types, Components and Working Principles](#)

Jun 18, 2023 · The layout of a photovoltaic power plant depends on several factors, such as site conditions, system size, design objectives, and grid requirements. However, a typical layout ...

[Jackery HomePower 3600 Plus Portable Power Station with ...](#)

Aug 19, 2025 · It also supports charging via AC in 2.5 hours, solar in 4 hours, or a gas generator in 2.5 hours --delivering a full day of quiet, clean energy. Ultra-Portable & Lightweight: The ...



[Solar Power Plants: Types, Components and ...](#)

Jun 18, 2023 · The layout of a photovoltaic power plant depends on several factors, such as site conditions, system size, design objectives, and grid ...

Solar Power Station

This thermal power triggers Rankine, Brayton or Sterling cycles and finally, mechanical energy is converted into electricity through an electric generator which is further injected into the ...



Storage and Transmission Capacity Requirements of a Remote Solar Power

Nov 9, 2021 · Large solar power stations are usually located in remote areas and connect to the main grid via a long transmission line. The energy storage unit is deployed locally with the ...



Storage and Transmission Capacity Requirements of a ...

Sep 14, 2021 · Abstract--Large solar power stations usually locate in remote areas and connect to the main grid via a long transmission line. Energy storage unit is deployed locally with the ...

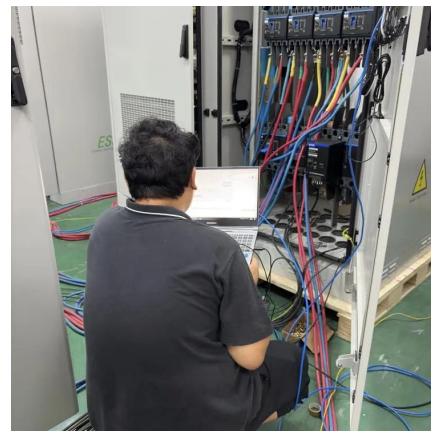


Electrical Power Generation, Conversion and Transmission ...

May 16, 2025 · The objective of this chapter to give students a basic understanding of the electrical power systems required in renewable energy systems. This includes generators, ...

Electric Transmission and Transmission Facilities

For newly constructed solar energy power plants, if no existing suitable transmission facilities were available, new transmission lines and associated facilities would be required. The ...



Solar Power and the Electric Grid, Energy Analysis (Fact ...

Sep 30, 2013 · The grid also allows generators to be located closer to resources (e.g., fuel supply, water, available land) and ship electricity over the transmission and distribution network to ...



[60 MW grid tied solar power plant with 115 ...](#)

Apr 21, 2025 · System Power Flow A solar (PV) plant consisting of arrays ...



[\(PDF\) A Lightweight Space-based Solar Power ...](#)

Jun 15, 2022 · We propose a novel design for a lightweight, high-performance space-based solar power array combined with power ...

(PDF) A Lightweight Space-based Solar Power Generation and Transmission

Jun 15, 2022 · We propose a novel design for a lightweight, high-performance space-based solar power array combined with power beaming capability for operation in geosynchronous orbit ...



Contact Us

For technical specifications, project proposals, or partnership inquiries, please visit:
<https://www.eiei.pl>



Scan QR Code for More Information



<https://www.eiei.pl>