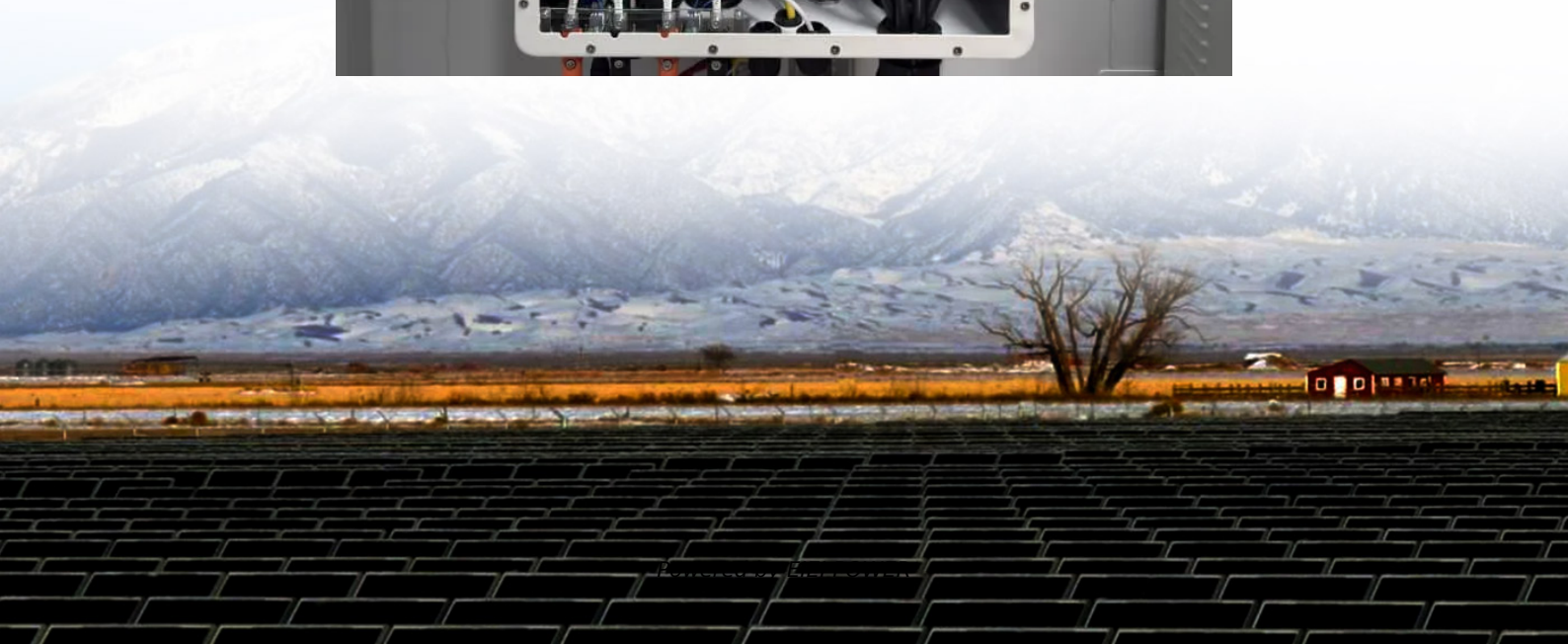


Solar panel installation angle and power





Overview

What is solar panel angle?

Solar panel angle is the tilt at which a solar panel is installed. Installing solar energy is more cost-effective and energy-efficient if you select the right angle for the solar panels. The solar panel angle is calculated in relation to the ground or the horizontal plane of the equator in technical terms.

How to choose a solar installation angle?

If connected to a stand-alone power system, the installation angle of solar panels should be based on the light conditions to obtain the maximum power output. Generally, if the output of the solar panels can be met even on the lowest light intensity of the year, then the solar output the chosen angle will meet the year-round demand.

What is solar panel orientation & angle?

This makes the orientation and angle of solar panels important in maximizing the solar output. Solar panel orientation refers to the cardinal direction the panel is facing: north, south, east or west. To be more specific, the orientation refers to the horizontal direction of solar panels in relation to the equator.

What angle should a solar panel be tilted to?

As a general rule of thumb, the ideal solar panel angle will match your home's latitude, usually around 30°- 45° and facing south in the US. For maximum energy output in summer, tilt the solar panel to your home's latitude minus 15 degrees. For maximum energy output in winter, tilt the panel to your home's latitude plus 15 degrees.



Solar panel installation angle and power

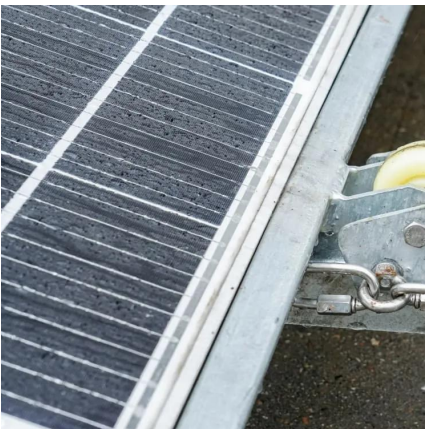


[The Best Angle for Solar Panel Installation](#)

Jul 16, 2025 · The importance of solar panel orientation, the best angle for solar panels, and the factors that influence the optimum solar installation angle.

[Optimal Solar Panel Angle for Max Output and good ...](#)

Mar 19, 2024 · Set up your solar panels at the perfect angle to capture the most sunlight and generate maximum power. Boost your energy efficiency now!



[Solar Panel Angle: Definition, and How to ...](#)

Aug 19, 2024 · Solar panel angle is the tilt at which a solar panel is installed. Installing solar energy is more cost-effective and energy-efficient if you ...

[How to Find the Best Orientation and Angle of Solar Panels?](#)

Putting solar panels at the optimal angle and to the best orientation is essential to obtain the maximum energy in a solar power system. To maximize the energy conversion efficiency, use



...



[Solar Panel Best Angle , Tilt & Orientation ...](#)

Sep 6, 2025 · Find the best solar panel angle for your location. Learn tilt formulas, seasonal adjustments, and tips to maximize energy efficiency in ...



[Solar Panel Angle: Definition, and How to Calculate](#)

Aug 19, 2024 · Solar panel angle is the tilt at which a solar panel is installed. Installing solar energy is more cost-effective and energy-efficient if you select the right angle for the solar ...



[Solar Panel Direction & Orientation: 2025 Complete Guide](#)

Aug 8, 2025 · Discover the optimal direction and angle for solar panels to maximize energy output. Complete guide with calculations, tools, and location-specific recommendations for 2025.



Best Angle for Solar Panel Installation: Complete Guide 2025

Discover the best angle for solar panels in 2025. Learn tilt, direction, and tips to boost efficiency using solar panel angle ...

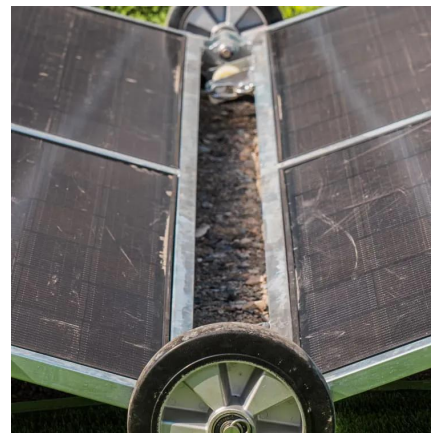


What is the best angle for solar panels - ...

Aug 22, 2025 · When it comes to solar panels, angle matters more than you think. The right tilt can boost efficiency, lower energy bills, and make the ...

How to Find the Best Orientation and Angle ...

Putting solar panels at the optimal angle and to the best orientation is essential to obtain the maximum energy in a solar power system. To ...



Solar Panel Direction and Angle

Jun 28, 2025 · The best solar panel direction and angle depends on your location. You have to check your latitude and longitude to determine the right direction and tilt angle.



[Solar Panel Best Angle , Tilt & Orientation Guide 2025](#)

Sep 6, 2025 · Find the best solar panel angle for your location. Learn tilt formulas, seasonal adjustments, and tips to maximize energy efficiency in 2025.

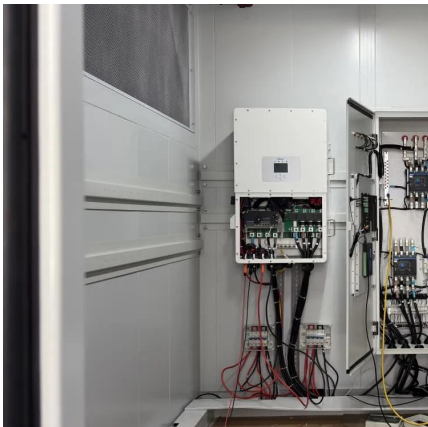


[The Best Angle for Solar Panel Installation](#)

Jul 16, 2025 · The importance of solar panel orientation, the best angle for solar panels, and the factors that influence the optimum solar installation ...

[How to calculate the solar installation angle , NenPower](#)

Jun 24, 2024 · To accurately determine the solar installation angle, several key factors must be considered. 1. Latitude, 2. Seasonal Variation, 3. Roof Characteristics, 4. Orientation Towards ...



[What is the best angle for solar panels - Expert Tips](#)

Aug 22, 2025 · When it comes to solar panels, angle matters more than you think. The right tilt can boost efficiency, lower energy bills, and make the most of your investment. This guide ...



[Solar Panel Direction & Orientation: 2025](#)

...

Aug 8, 2025 · Discover the optimal direction and angle for solar panels to maximize energy output. Complete guide with calculations, tools, and ...



[How to calculate the solar installation angle](#)

Jun 24, 2024 · To accurately determine the solar installation angle, several key factors must be considered. 1. Latitude, 2. Seasonal Variation, 3. ...

[Best Angle for Solar Panel Installation: Complete Guide 2025](#)

Discover the best angle for solar panels in 2025. Learn tilt, direction, and tips to boost efficiency using solar panel angle calculators.



[Solar Panel Direction and Angle](#)

Jun 28, 2025 · The best solar panel direction and angle depends on your location. You have to check your latitude and longitude to determine the ...



Contact Us

For technical specifications, project proposals, or partnership inquiries, please visit:
<https://www.eiei.pl>

Scan QR Code for More Information



<https://www.eiei.pl>