

# Solar inverter shutdown due to high load





## Overview

---

What causes a solar inverter to fail?

This fault occurs when the solar inverter loses synchronization with the grid, either due to a grid failure or anomalies in the grid's voltage or frequency. These anomalies might include voltage levels that are too high or too low, or frequency deviations from the standard 50 or 60 Hz, depending on regional standards.

Why does my solar inverter automatically shut off?

A solar inverter is designed to handle a certain amount of power. If it exceeds that limit, it will automatically shut off. This is done as a safety precaution in order to protect the inverter and keep it from overheating. You can prevent your solar inverter from shutting off by ensuring that your system is not overloaded.

Can inverter failure cause a shutdown?

Inverter failure can lead to a shutdown, but most failures can be fixed by the installer or user with assistance available from the Aftersales team if needed. High voltage in the inverter or the residence can trigger automatic shutdowns, and proper setup of shut-down parameters and voltage drop is important to prevent this.

What happens if a solar inverter overloads?

An overload in a solar inverter occurs when the power input from the solar panels exceeds the inverter's capacity to handle or convert it safely into output power. This condition can stress the inverter's components, such as capacitors and cooling systems, beyond their operational limits.



## Solar inverter shutdown due to high load

---



### [How to Resolve Inverter Capacity Overload and Prevent ...](#)

Dec 5, 2025 · Inverter capacity overload happens when the electrical load (the total amount of power drawn by connected appliances) exceeds the power rating of the inverter. This situation ...

### [Why does too much sun shut down a PV system?](#)

On especially sunny days, installers often receive the following question from customers: "Our solar energy system sometimes shuts down when the sun is shining. Why does this happen ...



### [Why Is My Inverter Shutting Off? A Complete Guide](#)

Inverter smells burnt Overheating occurs even on low load Warranty has expired and repair cost is high Why Choose Us for Inverters & Batteries? Being a leading solar products ...

### [Solar Inverter Keep Shutting Off? Why and ...](#)

Jun 29, 2022 · Why Does My Solar Inverter Keep Shutting Off - Main Reason A solar inverter is designed to handle a certain amount of power. ...



## [Solar Inverter Keep Shutting Off? Why and How to Fix It!](#)

Jun 29, 2022 · Why Does My Solar Inverter Keep Shutting Off - Main Reason A solar inverter is designed to handle a certain amount of power. If it exceeds that limit, it will automatically shut ...

## [5 Reasons Your Inverter Keeps Shutting Off](#)

Voltage Is Too High  
Inverter Cable Size Is Incorrect  
Internal System Failure  
Insufficient Solar Power  
No Grid Power  
Incorrect Inverter Parameters  
Why Is My Inverter beeping?  
How Do I Reset My Inverter?  
What Causes An Inverter to Fail?  
Conclusion  
The inverter is the most sensitive part of a solar system. This is understandable as it is designed to run your appliances. Seeing it shut down suddenly can be scary, but with the tips in this guide you can fix the problem. See more on [portablesolarexpert.lentoindia](#)



## **Why Is My Inverter Shutting Off? A Complete Guide**

Inverter smells burnt  
Overheating occurs even on low load  
Warranty has expired and repair cost is high  
Why Choose Us for Inverters & Batteries?  
Being a leading solar products ...

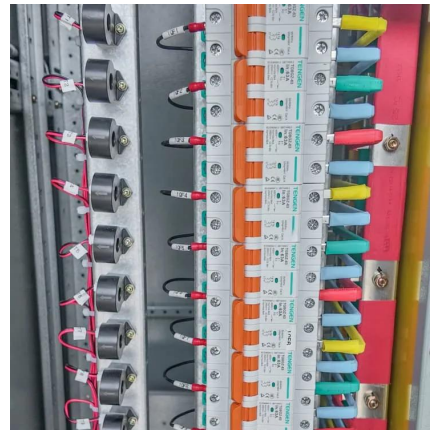


### [Why Does My Solar Inverter Shut Down, Trip ...](#)

The inverter shutting down due to high voltage is an important safety feature. It prevents damage to the inverter and other electrical equipment in your ...

### [Three Common Faults in PV Inverters and ...](#)

Load Mismatch or Sudden Changes: Large, abrupt load changes (e.g., simultaneous startup/shutdown of high-power devices) or loads with low ...



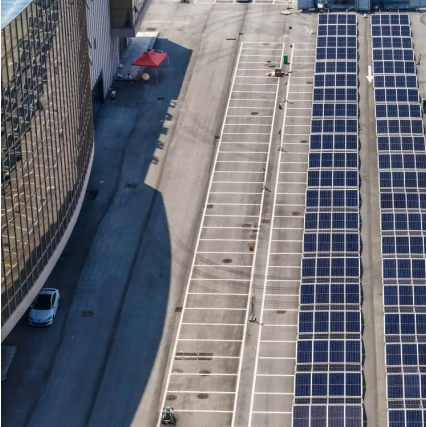
### [How to Resolve Inverter Capacity Overload ...](#)

Dec 5, 2025 · Inverter capacity overload happens when the electrical load (the total amount of power drawn by connected appliances) exceeds the ...

### [5 Reasons Your Inverter Keeps Shutting Off](#)

An inverter that keeps shutting off is a sign that something is wrong. Diagnose the problem correctly and get your inverter running again.



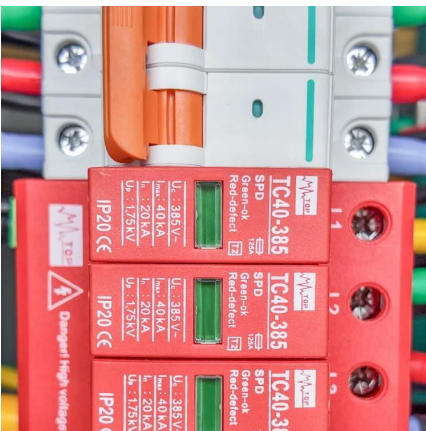


## Three Common Faults in PV Inverters and Their Solutions

Load Mismatch or Sudden Changes: Large, abrupt load changes (e.g., simultaneous startup/shutdown of high-power devices) or loads with low power factors/high harmonics ...

### **Solar Inverter Failures: Causes, Consequences, and Impact on ...**

May 13, 2024 · What is it? This fault occurs when the solar inverter loses synchronization with the grid, either due to a grid failure or anomalies in the grid's voltage or frequency. These ...



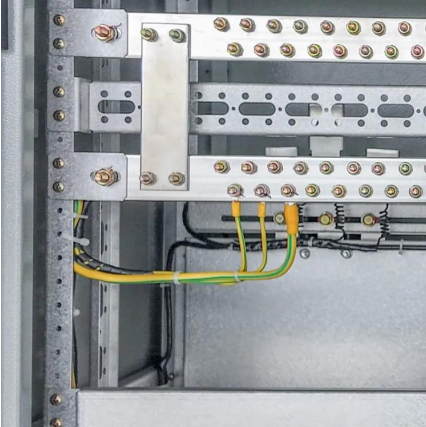
### **What Happens If You Overload Your Inverter? Real Dangers ...**

May 26, 2025 · What happens if you overload your inverter? From automatic shutdowns to serious damage, an overloaded inverter can lead to real trouble. This in-depth guide breaks ...

### Solar Inverter Failures: Causes, Consequences, ...

May 13, 2024 · What is it? This fault occurs when the solar inverter loses synchronization with the grid, either due to a grid failure or anomalies in ...





## [Why Does My Solar Inverter Shut Down, Trip or Reduce Power?](#)

The inverter shutting down due to high voltage is an important safety feature. It prevents damage to the inverter and other electrical equipment in your home. To resolve this issue, you may ...

## [Common Solar Inverter Problems and How to Fix Them](#)

Aug 19, 2025 · Discover the top 5 solar inverter problems, how to fix them, and expert tips to extend inverter life. Troubleshoot issues before they impact your solar savings.



## Contact Us

For technical specifications, project proposals, or partnership inquiries, please visit:  
<https://www.eiei.pl>

**Scan QR Code for More Information**



<https://www.eiei.pl>