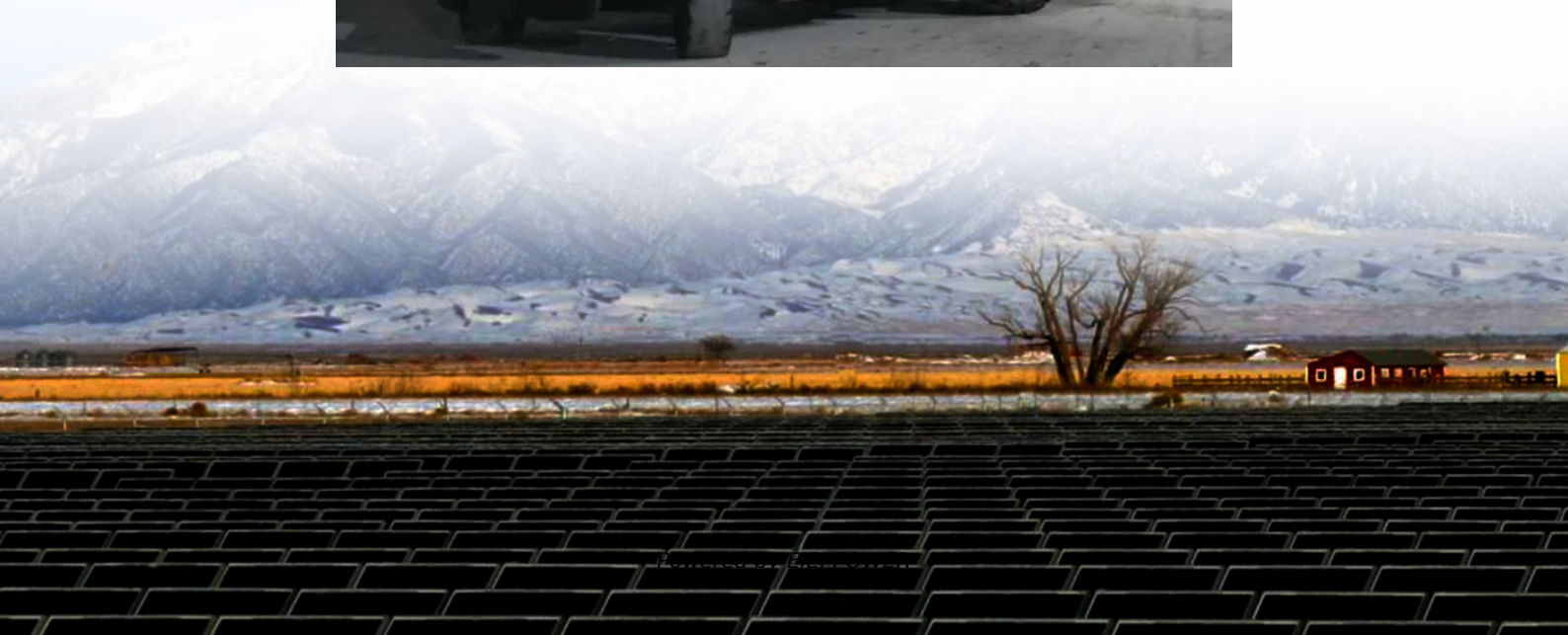


Solar grid-connected inverter heat loss





Overview

What is grid connected solar photovoltaic inverter?

Grid Connected Solar Photovoltaic inverters are always part of the 'RE systems which are connected to the grid. Based on the discussions with the inverter manufacturers, suppliers, distributors, and skilled installation workers, inverter failures are one of the major parts of grid-based RE systems.

How do PV inverter topologies affect power loss?

The power devices employed in various PV inverter topologies inevitably result in a redistribution of power losses within the system, particularly when the solar irradiance and ambient temperature are variable.

What are power losses & temperature modeling in PV inverters?

Power losses and temperature modeling Power losses in semiconductor devices are closely related to junction temperature. In PV inverters, power losses occur due to conduction and switching processes within the IGBT devices.

How a grid-connected solar power plant works?

The heart of grid-connected solar power plant operation is the performance of grid tie inverter. The inverter will operate only when the grid is alive and its main function is to convert the solar input from photovoltaic modules to output AC power for grid supply.



Solar grid-connected inverter heat loss



Design, Implementation, and Analysis for Reducing Energy ...

Dec 25, 2024 · The proposed inverter design focuses on reducing switching losses, minimizing heat dissipation, and achieving higher switching frequencies compared to traditional silicon ...

[Heat Dissipation in Solar Inverters](#)

Dec 19, 2024 · Solar inverters play a critical role in converting direct current generated by solar panels into alternating current suitable for household or industrial use. One of the key ...

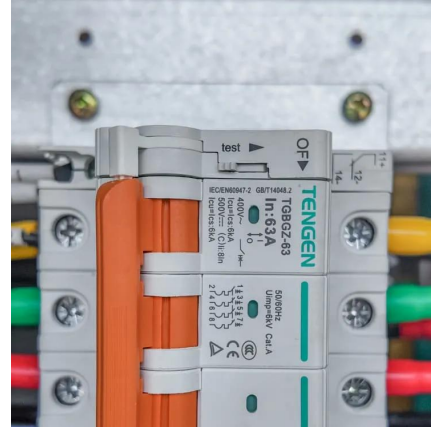


Assessing the impact of PV panel climate-based degradation ...

Feb 15, 2024 · This paper provides an evaluation of a 4-kW grid-connected full-bridge PV inverter under three different scenarios to assess its reliability with a fixed PV degradation rate, with a ...

[Grid Connected Inverter for Solar Photovoltaic Power ...](#)

Jun 23, 2023 · The modelling methodology by variation of solar radiation supplies constant input power to the inverter and grid connected system. The Zero Voltage Switching (ZVS) technique ...



[Alternate method for evaluating power-temperature ...](#)

Jun 18, 2025 · The heart of grid-connected solar power plant operation is the performance of grid tie inverter. The inverter will operate only when the grid is alive and its main function is to ...



Design and Implementation of Solar Grid-Connected Inverter ...

Jan 24, 2025 · In this article, an approach is presented to ensure that a rooftop solar power plant performs efficiently in the face of partial shading. A two-stage, five-level H-Bridge hardware ...



[How Solar Inverters Efficiently Manage High-Temperature ...](#)

Mar 6, 2025 · High temperatures can reduce solar inverter efficiency, limit power output, and shorten lifespan. Learn how heat impacts inverter performance and discover expert tips for ...





[PLECS-BASED THERMAL MODELLING AND ANALYSIS OF ...](#)

May 26, 2025 · This study, based on the PLECS simulation platform, investigates the thermal characteristics and power loss mechanisms of a three-level neutral-point-clamped (NPC) ...



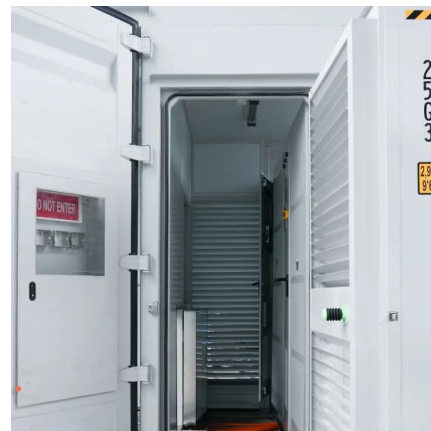
[Alternate method for evaluating power-temperature ...](#)

Jun 12, 2021 · In this paper, an alternate method is proposed for power-temperature derating characteristics of grid tie solar photovoltaic inverter and the method is evaluated using a 60 ...



[Low cost and compact six switch seven level grid tied](#)

Mar 14, 2025 · A six switch seven-level (S2-7 L) common ground type triple boost transformerless inverter topology for grid-tied solar PV applications is presented in this paper.



Contact Us

For technical specifications, project proposals, or partnership inquiries, please visit:
<https://www.eiei.pl>



Scan QR Code for More Information



<https://www.eiei.pl>