

# **Solar energy is directly connected to the inverter**





## Overview

---

How do solar inverters work?

They connect a series of solar panels (a string) to a single inverter, which converts the combined DC output into AC electricity. 2. Microinverters: These are small inverters that connect directly to each solar panel, converting DC to AC electricity at the source.

How do I connect my solar panels to an inverter?

The first step in connecting your solar panels to an inverter is thorough planning and preparation. Assess your energy needs, identify an optimal location for both solar panels and the inverter (with access to direct sunlight and proximity to the electrical panel), and obtain any permits or approvals required by local authorities.

Can a 12V inverter be directly connected to a solar panel?

Yes, a 12V inverter can be directly connected to a solar panel. However, the direct connection is not commonly recommended because solar panels do not provide a stable voltage output. To ensure a stable power supply, it's advantageous to use a charge controller between the PV solar panel and the inverter.

Why should I connect my solar panel to an inverter?

Connecting your solar panel to an inverter is important in harnessing solar energy for daily use. An inverter transforms the direct current (DC) electricity produced by the PV solar panels into alternating current (AC) electricity (the standard form used by most home appliances).



## Solar energy is directly connected to the inverter

---



### [Can You Connect a Solar Panel Directly to an Inverter?](#)

Jul 15, 2025 · "Can you connect a solar panel directly to an inverter?" is a frequently asked question regarding solar energy installations. We at Polar ESS are here to help you with this ...

### [Can You Run an Inverter Directly from a Solar Panel?](#)

With an inverter connected directly to a solar panel you'll only really get any decent performance during peak sun hours, so a maximum of 4 hours a day. You won't get any power at night, and ...



### [Can I Connect Solar Panel Directly to Inverter](#)

No, connecting solar panels directly to an inverter is unsafe and inefficient. You need a charge controller to regulate voltage (typically 12V/24V/48V) and prevent cell overcharging. Grid-tied ...

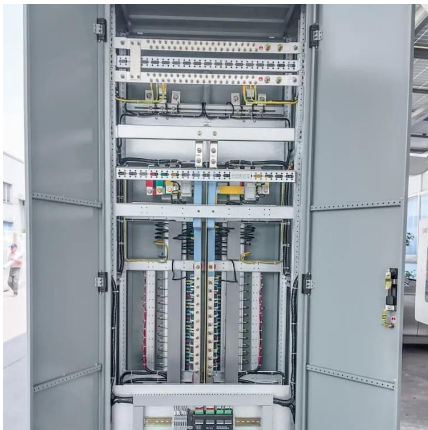
### [Can I connect an inverter directly to a solar ...](#)

May 27, 2025 · There's a common question among solar energy enthusiasts: can you connect an inverter directly to a solar panel? Understanding the ...



## Ultimate Guide 2023: How to Connect Solar Panel to Inverter ...

Nov 1, 2023 · Know how to connect a solar panel to inverter for efficient, renewable energy at home. Unfold the benefits and optimization methods for solar power systems.



## [How to Connect Solar Panels Directly to an Inverter](#)

A typical solar power setup has the solar panels connected to the batteries and inverter, and together they produce energy. But batteries are not necessary for the system to work. You can ...



## [Can You Run an Inverter Directly from a Solar ...](#)

With an inverter connected directly to a solar panel you'll only really get any decent performance during peak sun hours, so a maximum of 4 hours a ...





## [Can You Connect A Solar Panel Directly To An Inverter](#)

Aug 8, 2025 · To connect solar panels directly to an inverter, you will need solar panels, an inverter (like string or microinverters), mounting equipment, appropriate wiring, and ...



## [Can A Solar Panel Be Connected Directly To An Inverter?](#)

It is possible to directly connect solar panels to an inverter without a charge controller. However, using a high-quality solar power inverter that can fulfil various functions is important. The solar ...

## [How to Connect a Solar Panel to an Inverter](#)

Aug 7, 2025 · Learn how to connect a solar panel to an inverter with step-by-step guides, inverter types, optimization tips, and FAQs. Discover AUXSOL's tailored solar solutions for efficient ...



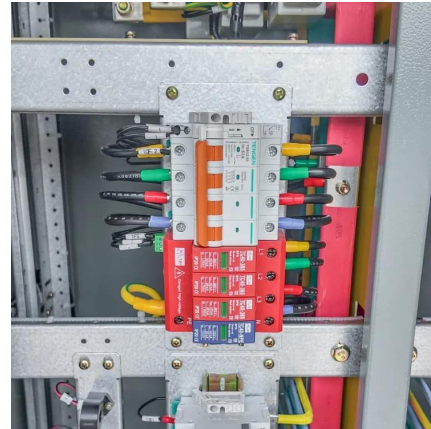
## [Can I Connect My Solar Panels Directly to My Inverter?](#)

Oct 23, 2025 · Considering wiring your solar panels directly to your inverter? This sounds simple, but there's a whole lot more to it than just wiring wires. If you're installing solar panels, you'll ...



## [Can I connect an inverter directly to a solar panel](#)

May 27, 2025 · There's a common question among solar energy enthusiasts: can you connect an inverter directly to a solar panel? Understanding the relationship between these



## [Ultimate Guide 2023: How to Connect Solar ...](#)

Nov 1, 2023 · Know how to connect a solar panel to inverter for efficient, renewable energy at home. Unfold the benefits and optimization methods ...

## Contact Us

---

For technical specifications, project proposals, or partnership inquiries, please visit:  
<https://www.eiei.pl>

[Scan QR Code for More Information](#)



<https://www.eiei.pl>