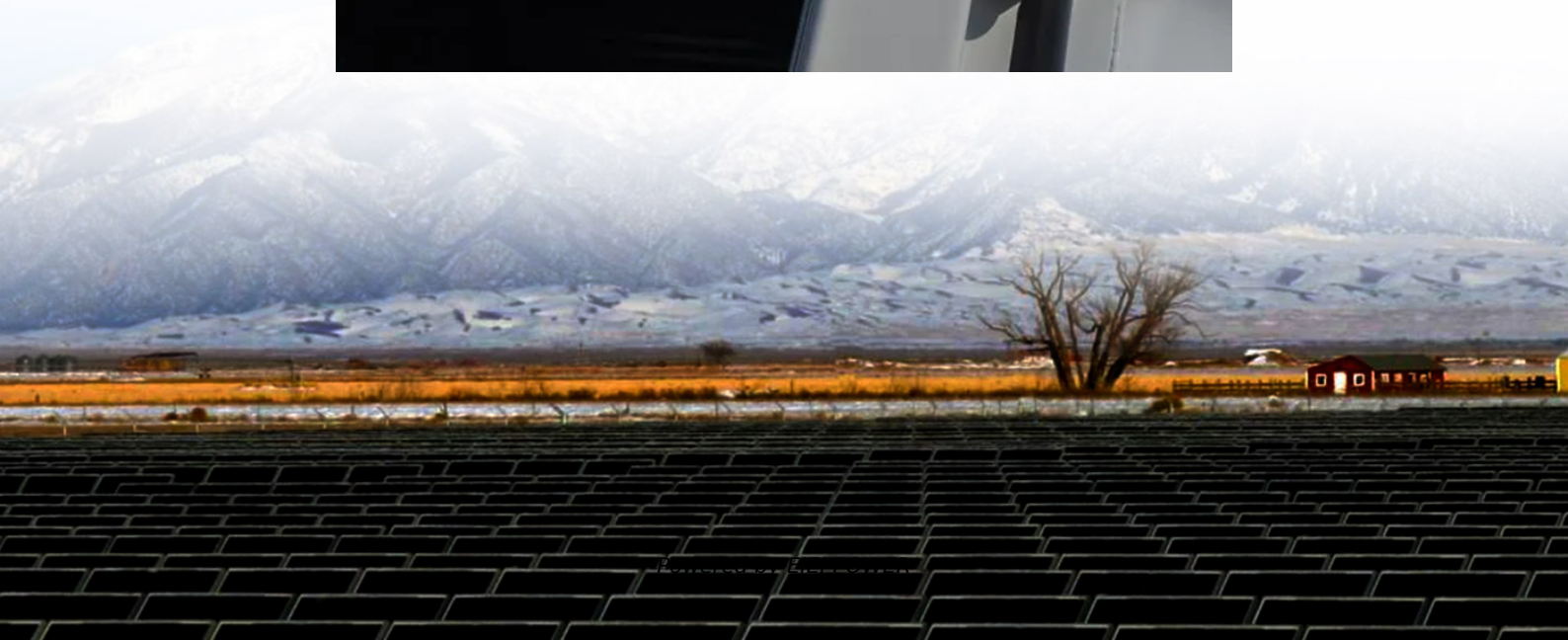


Sierra Base Station Power Management





Overview

What is a Sierra RF transceiver?

About MaxLinear's Sierra Radio SoC Solution Sierra's RF transceiver uses a low-power wide-band Zero-IF (ZIF) architecture and supports 8 transmitters (TX) and 8 receivers (RX) with 2 feedback receivers (FBRX). Each RX supports wide signal bandwidths up to 400MHz and each TX and FBRX supports signal bandwidths up to 900MHz.

What interfaces does Sierra support?

Sierra supports an O-RAN fronthaul Split Option 7.2x Category A interface with up to four 10 or 25Gbit/s Ethernet interfaces. Sierra integrates an embedded CPU for system control. The CPU is an integrated quad-core Arm® A53 processor with Neon™ extensions.

What kind of processor does the Sierra RF radio have?

The CPU is an integrated quad-core Arm® A53 processor with Neon™ extensions. Each Arm® core has 1MB of internal SRAM and has access to an additional 8GB of external DRAM through a DDR controller. For more information on the Sierra RF Radio SoC or MaxLIN DPD linearization technology, visit: [About MaxLinear, Inc.](#)



Sierra Base Station Power Management

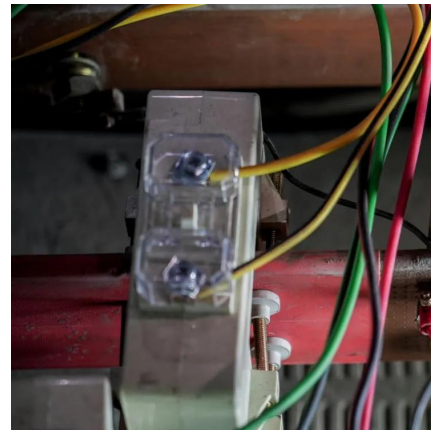


Mastering L6201: Stable Performance in Communication Base Station Power

The technical features of the L6201 play a crucial role in power management for communication base stations. This power manager boasts high efficiency, maintaining efficiency under high ...

[Smart Power of Communication Base Station](#)

Using 5G Internet of things technology, combined with data analysis, to improve the traditional power management level, and to achieve the visible, measurable, controllable, and linkage of ...



[An Overview of Energy-efficient Base Station ...](#)

Sep 5, 2022 · Since most of the energy consumed in cellular networks is used by base stations (BSs), algorithms for managing BSs seem to be the most urgent development to achieve ...

[Collaborative Multi-BS Power Management for Dense Radio ...](#)

Apr 17, 2023 · Network energy efficiency is a main pillar in the design and operation of wireless communication systems. In this paper, we investigate a dense radio access network



(dense ...



[MaxLinear Showcases Sierra Radio SoC Linearization ...](#)

Mar 3, 2025 · About MaxLinear's Sierra Radio SoC Solution Sierra's RF transceiver uses a low-power wide-band Zero-IF (ZIF) architecture and supports 8 transmitters (TX) and 8 receivers ...



[Sierra Base Station Power Management](#)

The technical features of the L6201 play a crucial role in power management for communication base stations. This power manager boasts high efficiency, maintaining efficiency under high



[MaxLinear Demonstrates Breakthrough Sierra Radio SoC ...](#)

Mar 3, 2025 · MaxLinear showcases Sierra SoC simultaneously linearizing four different power amplifiers from leading manufacturers, enabling cost-effective Open RAN radio unit development.





10

Aug 5, 2012 · 10 - Power management for base stations in a smart grid environment from Part III - Base station power-management techniques for green radio networks Published online by ...

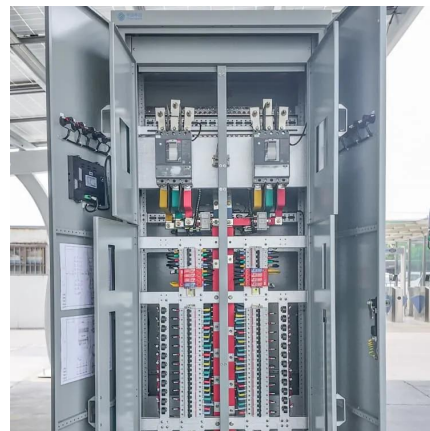


How to optimize the power management of a TETRA Base Station?

If necessary, make adjustments to the strategies based on the evaluation results. Conclusion Optimizing the power management of a TETRA base station is a multi - faceted process that ...

[Optimum sizing and configuration of electrical system for](#)

Jul 1, 2025 · A detailed analysis was conducted under different grid power availabilities and base station load profiles heterogeneous to different geographical locations where ...



Contact Us

For technical specifications, project proposals, or partnership inquiries, please visit:
<https://www.eiei.pl>



Scan QR Code for More Information



<https://www.eiei.pl>