

# Service Quality of 120-foot Energy Storage Containers for Subway Stations





## Overview

---

What is energy storage container?

SCU uses standard battery modules, PCS modules, BMS, EMS, and other systems to form standard containers to build large-scale grid-side energy storage projects.

What is a 20 ft container?

20ft container with energy over 4MWh and battery life extended more than 20% Using a standard 20-foot container, high energy density, small size, and convenient transportation Support plug-and-play combination of two containers, flexibly suitable for the application of large energy storage power stations.

What types of energy storage systems does Jinko power offer?

Depending on application scenario, Jinko Power provides all types of customers with tailored energy storage system solutions, including power energy storage system integration solutions, industrial and commercial energy storage system integration solutions, and household energy storage systems.

What are the advantages of a 20 ft container?

Using a standard 20-foot container, high energy density, small size, and convenient transportation Support plug-and-play combination of two containers, flexibly suitable for the application of large energy storage power stations. Five-level safety design, dual fire protection, with gas emission and explosion venting design.



## Service Quality of 120-foot Energy Storage Containers for Subway S

---



### [Sizing and Management of an Energy System for a ...](#)

Jul 4, 2025 · In this context, the paper presents a novel approach for optimally designing and controlling the photovoltaic plant and energy storage systems for a metro station in order to ...

### [Energy Storage for Subway Energy Recovery Systems](#)

Nov 28, 2024 · Energy storage systems efficiently recycle subway braking energy, enhancing energy savings, reducing costs, and supporting sustainability.



### [How Shipping Containers Are Being Used in Energy](#)

May 29, 2024 · Modified shipping containers are growing as energy storage solutions in industries like solar, wind, and more.

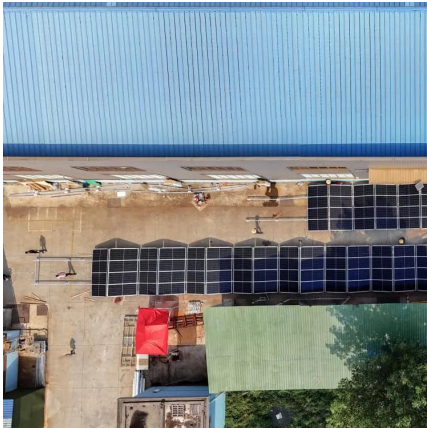


### **Sub-system energy model based on actual operation data for subway stations**

Jan 1, 2020 · This paper concentrates on the establishment of a sub-system energy model based on theoretical analysis and actual



operation data, with the aim to evaluate the operational ...



### [Jinko Power,EnergyStorage](#)

Depending on application scenario, Jinko Power provides all types of customers with tailored energy storage system solutions, including power energy storage system integration solutions, ...

## **Study on Superconducting Magnetic Energy Storage for Large Subway**

Oct 24, 2025 · Abstract and Figures With accelerating urbanization, subway stations, as high-energy-consumption sectors, face significant challenges in maintaining power supply stability ...



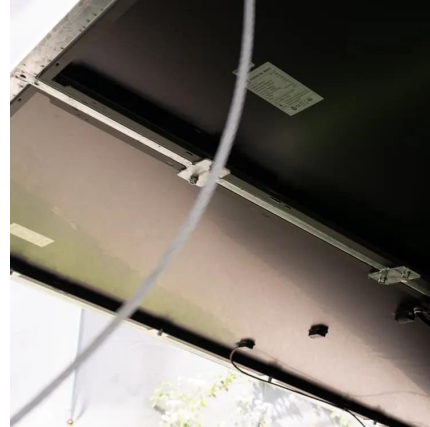
## **Optimal Parameters of Onboard Energy-Storage Devices for Subway**

Dec 8, 2024 · Energy-storage devices are one of the means of improving the energy efficiency of traction power-supply systems for transport. In addition, they can also provide a number of ...



## [BESS Container NoahX , Sunwoda Energy](#)

Sunwoda LBCS (liquid -cooling Battery Container System) is a versatile industrial battery system with liquid cooling shipped in a 20-foot container. The standard unit is prefabricated with a ...



## [Energy storage container, BESS container](#)

1 day ago · What is energy storage container? SCU uses standard battery modules, PCS modules, BMS, EMS, and other systems to form standard containers to build large-scale grid ...

## [Comparison of subway energy storage methods](#)

In 2021, the New York City Transit Subway system consumed approximately 1,500 GWh of traction energy with a demand of about 3,500 megawatts (MW), costing around \$203M. Subway trains ...



## Contact Us

---

For technical specifications, project proposals, or partnership inquiries, please visit:  
<https://www.eiei.pl>



## Scan QR Code for More Information



<https://www.eiei.pl>