

Rooftop communication signal base station





Overview

What is a rooftop Telecom Tower?

Rooftop telecom towers, often called rooftop cell towers or roof top antenna towers, are specialized structures installed on building rooftops to support antennas and equipment for wireless communication. Typically ranging from 3 to 30 meters in height, these towers use hot-dip galvanized steel (ASTM A123) for over 30 years of durability.

What is a rooftop antenna tower?

Roof top antenna towers facilitate radio, TV, and Wi-Fi signal transmission. In Chicago, rooftop antennas support local TV broadcasting, leveraging telecom rooftop towers for reliable signal delivery. Rooftop telecommunication towers provide last-mile connectivity for wireless internet service providers (WISPs) and utilities.

Why should you choose a telecommunication rooftop tower?

The towers are designed for easy maintenance and future network expansions, allowing for quick upgrades without extensive modifications. Reliable and efficient Telecommunication Rooftop Towers designed for urban networks, offering stable support for 4G, 5G, and equipment.

What is a rooftop tower?

A Rooftop Tower is a steel supporting structure installed on building rooftops for telecommunications equipment. These towers serve as mounting platforms for antenna arrays, microwave dishes, and other communication systems while requiring less height than ground-based towers, making them cost-effective solutions for urban deployments.



Rooftop communication signal base station



[Rooftop Base Stations & Structure . Murphy Tower](#)

Specializing in rooftop installations of wireless communications infrastructure including base station shelters and custom support structures.

[What Is A Rooftop Tower? -alltower](#)

Jul 8, 2024 · A rooftop tower, also known as a rooftop base station or rooftop site, refers to a telecommunication tower or antenna system that is installed on the rooftop of a building or ...



[Rooftop tower base station: the 'invisible ...](#)

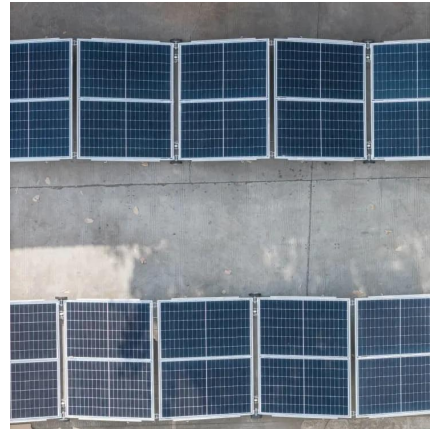
Jan 7, 2025 · The rooftop tower base station, with its advantage of being "high and mighty", spreads signals like a sky net to all directions, allowing ...

[Understanding Rooftop Telecom Towers: Types and ...](#)

Jul 22, 2025 · Rooftop telecom towers, often called rooftop cell towers or roof top antenna towers, are specialized structures installed on building rooftops to support antennas and



equipment for ...

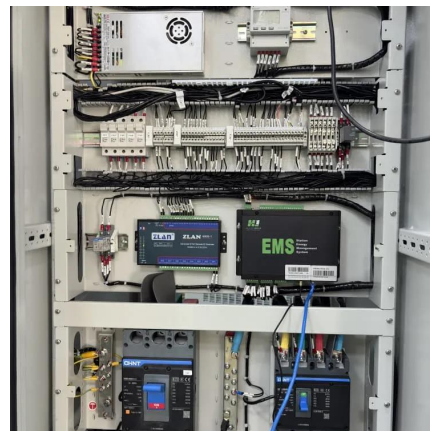


Rooftop tower base station: the 'invisible communication ...

Jan 7, 2025 · The rooftop tower base station, with its advantage of being "high and mighty", spreads signals like a sky net to all directions, allowing once isolated villages to catch the ...

What is A Rooftop Tower?

Jul 16, 2024 · A rooftop tower, also known as a rooftop base station or rooftop site, refers to a telecommunication tower or antenna system that is installed on the rooftop of a building or ...



Rooftop Base Station , Huijue Group E-Site

Each rooftop base station becomes a 3D network probe, mapping signal propagation in real-time. Suddenly, telecom operators aren't just service providers - they're urban digital twin architects.



rooftop base telecommunication station

Define rooftop base telecommunication station. ' means a support structure attached to the roof, side or any part of a building and used to accommodate telecommunication infrastructure for ...



Telecommunication Rooftop Tower for Reliable Signal Boost

Dec 2, 2025 · Our Telecommunication Rooftop Tower are designed to provide efficient, stable, and space-saving solutions for enhancing telecom networks in urban areas. Installed on ...

Rooftop Tower Manufacturer

Dec 6, 2025 · Rooftop Tower Rooftop Tower, also known as rooftop telecom angular tower or rooftop base station, serves as a steel supporting structure designed for communication ...



Rooftop Base Stations & Structure , Murphy ...

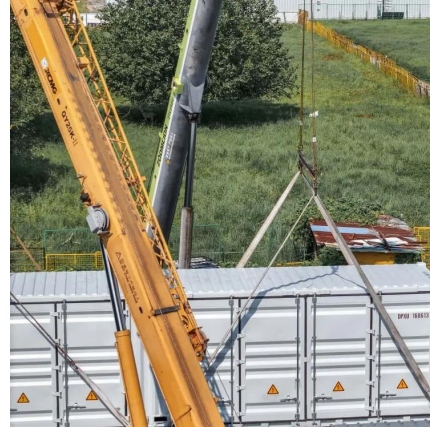
Specializing in rooftop installations of wireless communications infrastructure including base station shelters and custom support structures.



Improving 5 G base station placement through precise rooftop

...

Jun 18, 2025 · The accurate deployment of 5 G base stations (BSs) in urban environments is essential for achieving optimal network performance. In these scenarios, the most common ...



[Telecommunication Rooftop Tower for ...](#)

Dec 2, 2025 · Our Telecommunication Rooftop Tower are designed to provide efficient, stable, and space-saving solutions for enhancing ...

Contact Us

For technical specifications, project proposals, or partnership inquiries, please visit:
<https://www.eiei.pl>

[Scan QR Code for More Information](#)



<https://www.eiei.pl>