

# Outdoor base station gateway settings





## Overview

---

How do I set up a base station?

Set up the base station using either the tripod or T-bar mounting method. You must use an external radio antenna kit for the internal 450 MHz or 900 MHz radio. To avoid interference between the 900 MHz radio and GPRS transmissions, do not mount the external radio antenna within 1 m (3.3 ft) of the GSM antenna.

What is a Multitech IP67 base station?

The MultiTech Conduit® IP67 Base Station is a ruggedized IoT gateway solution, specifically designed for outdoor LoRa® public or private network deployments. The highly scalable and certified Conduit IP67 gateway is capable of resisting the harshest environmental factors including moisture, dust, wind, rain, snow and extreme heat.

How to connect a gateway outside?

Pick the end of the cable which will be connected to the gateway outside and prepare the connector with the following steps: slide the provided cable gland on the cable with the screws towards the end where the RJ45 connector will be. strip the cable to expose the twisted pairs and align the wires in the correct order.

What is a managed base station?

Trimble recommends that base stations that are connecting from a portable, daily-use setup are treated as unmanaged base stations and those used for permanent or semi-permanent setups where the receiver will be in the same place for a longer period of time are treated as managed base stations.



## Outdoor base station gateway settings

---

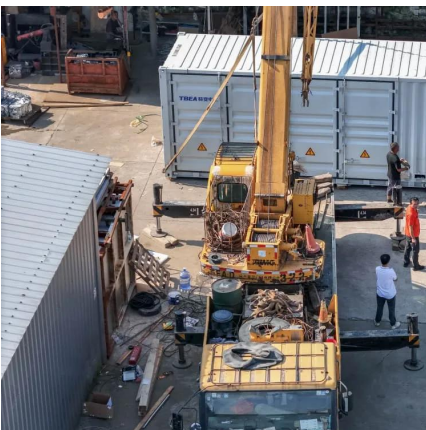


### [How to Set Up WisBlock Kit 4 and RAK Edge Gateway](#)

Oct 25, 2024 · Overview This guide is about learning how to set up a complete LoRaWAN application from the device and gateway up to the network server. This guide is composed of ...

### [The Things Outdoor Gateway , The Things Stack for LoRaWAN](#)

4 days ago · This guide contains instructions for connecting The Things Outdoor Gateway to The Things Stack. The Things Outdoor Gateway (TTOG) is an industrial, outdoor and fully ...



### [Outdoor LoRaWAN Gateway](#)

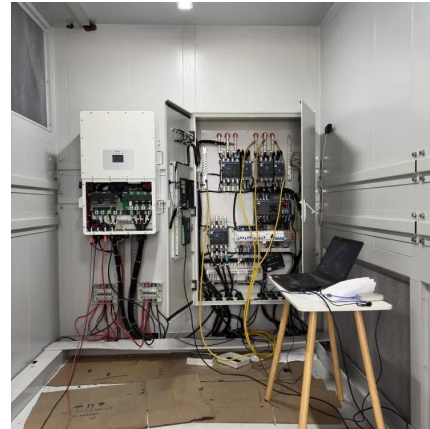
Jun 2, 2025 · When join EUI and dev EUI are both configured, only packets that match both conditions will be forwarded. This feature is not supported when the packet forwarder type is ...

## LoRa Base Station

Jul 31, 2024 · This outdoor gateway uses LoRaWAN technology from Semtech and is complied with specification defined by LoRa



Alliance. This gateway has two LoRa, one GPS & one LTE ...



### [Conduit® IP67 Base Station Cellular Industrial Gateways](#)

The MultiTech Conduit® IP67 Base Station is a ruggedized IoT gateway solution, specifically designed for outdoor LoRa® public or private network deployments. The highly scalable and ...

### [UFISPACE OUTDOOR SERIES USER MANUAL Pdf Download](#)

View and Download UfiSpace Outdoor Series user manual online. LoRa Base Station. Outdoor Series gateway pdf manual download. Also for: Macro.



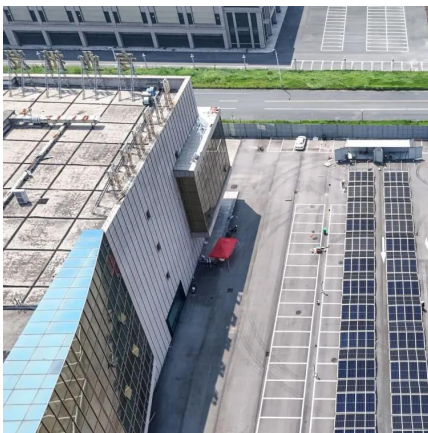
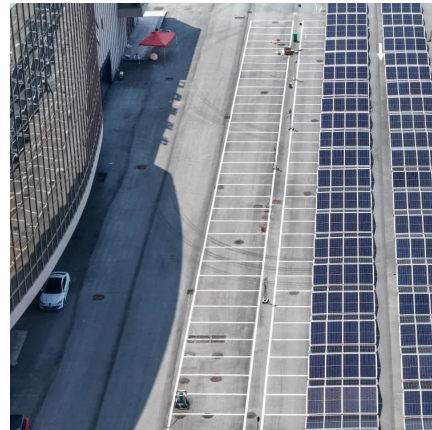
### [Common ways to set up a base station](#)

Dec 1, 2025 · The following figure shows a n SPS Modular receiver permanent installation: Setting up a base station for daily site use: T-Bar For construction applications where a daily setup ...



## [Conduit® IP67 Base Station Cellular Industrial...](#)

The MultiTech Conduit® IP67 Base Station is a ruggedized IoT gateway solution, specifically designed for outdoor LoRa® public or private ...

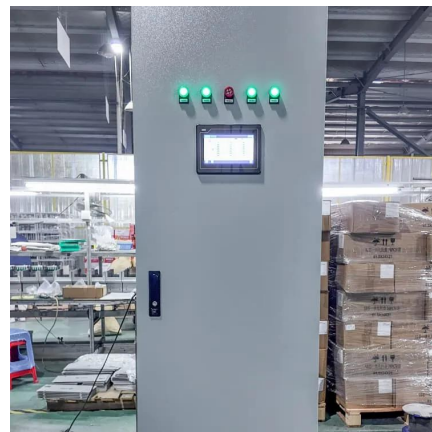


## **Wirnet iStation**

Jan 28, 2022 · For ecological reasons, this guide has been printed on recycled paper Need help? In order to provide the most updated technical documentation, as well as considering and ...

## [Kerlink iStation · Microshare](#)

Oct 30, 2025 · Setting up the Kerlink iStation The Kerlink iStation is a carrier-grade LoRaWAN® outdoor gateway which receives radio transmissions from the Microshare IoT devices in and ...



## [Kerlink iStation · Microshare](#)

Oct 30, 2025 · Setting up the Kerlink iStation The Kerlink iStation is a carrier-grade LoRaWAN® outdoor gateway which receives radio transmissions ...



## [Gateway and Base Station Installation Guide](#)

Aug 11, 2018 · Installation Planning IMPORTANT: This document provides guidelines for the proper placement and installation of Gateways, Base Stations, and the antennas. Failure to ...



## [How to Set Up WisBlock Kit 4 and RAK Edge ...](#)

Oct 25, 2024 · Overview This guide is about learning how to set up a complete LoRaWAN application from the device and gateway up to the ...

## Contact Us

---

For technical specifications, project proposals, or partnership inquiries, please visit:  
<https://www.eiei.pl>



## Scan QR Code for More Information



<https://www.eiei.pl>