

# Maximum discharge current of base station battery





## Overview

---

What is a maximum continuous discharge current?

**Maximum Continuous Discharge Current** – The maximum current at which the battery can be discharged continuously. This limit is usually defined by the battery manufacturer in order to prevent excessive discharge rates that would damage the battery or reduce its capacity.

What is the maximum discharge cut-off voltage for a battery?

The discharge cut-off voltage is typically around 3.0V -3.3V per cell. When selecting a battery for any application, understanding its maximum continuous discharge current and discharge cut-off voltage is crucial. These parameters ensure the safe and optimal operation of the battery, preventing damage and extending its lifespan.

How long can a battery be discharged?

**Maximum 30-sec Discharge Pulse Current** –The maximum current at which the battery can be discharged for pulses of up to 30 seconds. This limit is usually defined by the battery manufacturer in order to prevent excessive discharge rates that would damage the battery or reduce its capacity.

How many volts can a battery discharge?

The maximum continuous discharge current varies by design but often falls between 1C and 2C; for example, for a 100Ah battery, this could be between 100A and 200A continuously without damage. The discharge cut-off voltage is typically around 3.0V -3.3V per cell.



## Maximum discharge current of base station battery

---

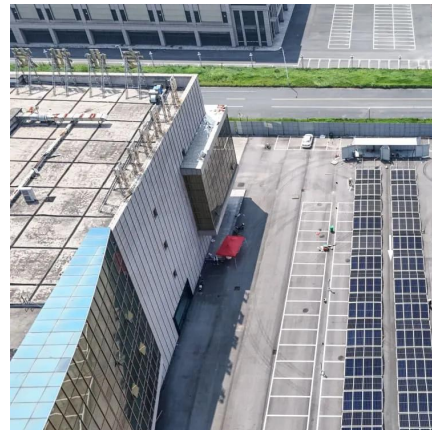


### How does the maximum discharge current affect the battery...

May 15, 2025 · Conclusion In conclusion, the maximum discharge current is a crucial factor that affects the performance of SMF AGM batteries in multiple ways. It impacts battery capacity, ...

### [How does the maximum discharge current ...](#)

May 15, 2025 · Conclusion In conclusion, the maximum discharge current is a crucial factor that affects the performance of SMF AGM batteries in ...



### [Maximum Continuous Discharge Current and Cut-off Voltage](#)

Oct 10, 2024 · Understanding the maximum continuous discharge current and discharge cut-off voltage is essential for the safe and efficient operation of batteries.



### batteries

Nov 13, 2025 · This was based on LI-ION batteries and not LiPo. With me being a newbie to battery ordering can anyone provide me with an explanation as how I can find out the max ...



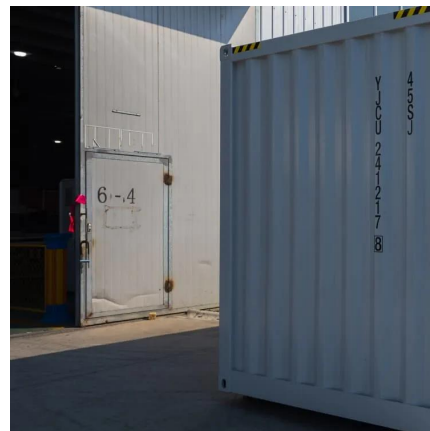
[Battery discharge current limit for communication base ...](#)

Which battery is best for telecom base station backup power? Among various battery technologies, Lithium Iron Phosphate (LiFePO4) batteries stand out as the ideal choice for ...



[Maximum Cell Discharge Capability](#)

Feb 12, 2024 · Establishing the maximum cell discharge capability is difficult without understanding the design in detail.



[Base Station Battery Peak Discharge Current Nominal Voltage](#)

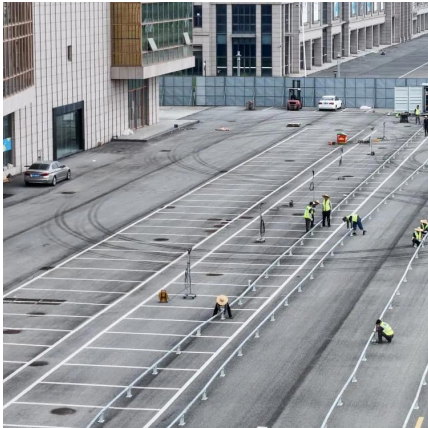
Nov 22, 2025 · Model No.: TRD-256200 Nominal Voltage: 25.6V Nominal Capacity: 200Ah Energy: 5120Wh Dimension: L442xW460xH177 mm Weight: 49 Kg BMS Discharge Cut-Off ...





[Telecom Base Station Backup Power Solution: Design Guide ...](#)

Jun 5, 2025 · Discover the 48V 100Ah LiFePO4 battery pack for telecom base stations: safe, long-lasting, and eco-friendly. Optimize reliability with our design guide.



[LI-ION BATTERY SOLUTION FOR TELECOM BASE STATION](#)

Jan 29, 2016 · Voltage range (V) Nominal discharge current (Amps) Nominal recharge current (Amps) Maximum discharge current (Amps) Maximum recharge current (Amps) Peak ...

[A Guide to Understanding Battery Specifications](#)

Dec 18, 2008 · Maximum Continuous Discharge Current - The maximum current at which the battery can be discharged continuously. This limit is usually defined by the battery ...



[Telecom Base Station Backup Power Solution: ...](#)

Jun 5, 2025 · Discover the 48V 100Ah LiFePO4 battery pack for telecom base stations: safe, long-lasting, and eco-friendly. Optimize reliability with ...



## batteries

Nov 13, 2025 · This was based on LI-ION batteries and not LiPo. With me being a newbie to battery ordering can anyone provide me with an ...



### [5G Base Station Lithium Battery: Capacity and Discharge ...](#)

Sep 26, 2025 · Typical Values: 5G Macro Station: Continuous discharge up to 500A. Urban Small Cell: Peak discharge up to 150A. EverExceed's high-rate discharge LiFePO4 batteries are ...

## Contact Us

---

For technical specifications, project proposals, or partnership inquiries, please visit:  
<https://www.eiei.pl>

**Scan QR Code for More Information**



<https://www.eiei.pl>