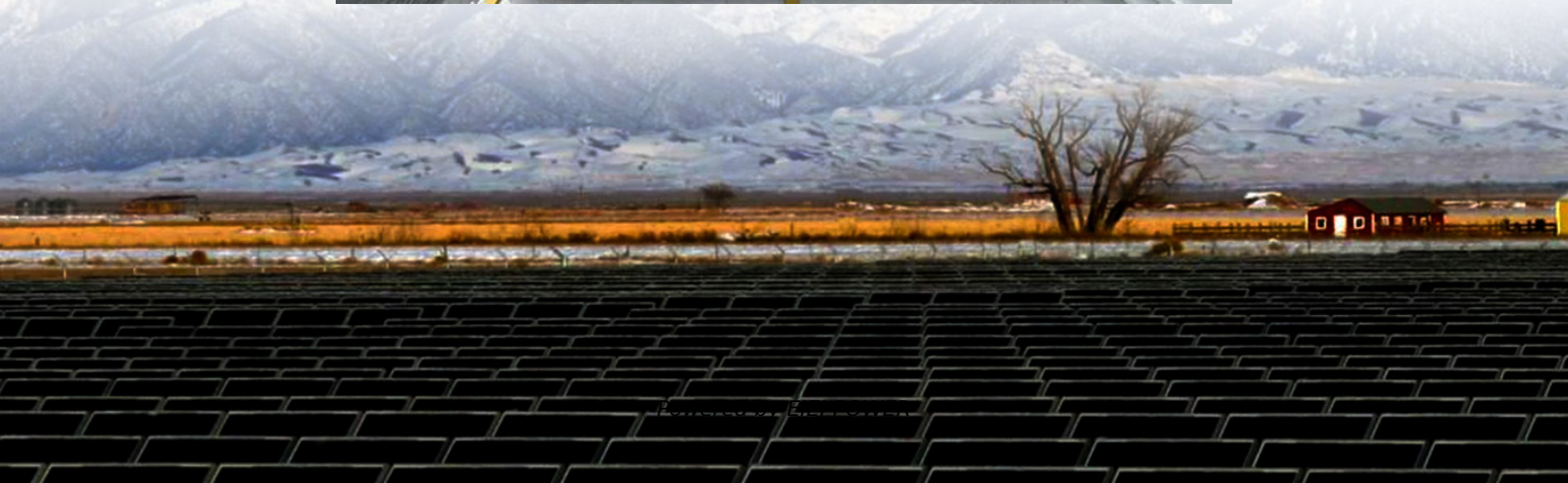


Maximum charge and discharge times of energy storage power station





Overview

What is energy storage duration?

When we talk about energy storage duration, we're referring to the time it takes to charge or discharge a unit at maximum power. Let's break it down: Battery Energy Storage Systems (BESS): Lithium-ion BESS typically have a duration of 1-4 hours. This means they can provide energy services at their maximum power capacity for that timeframe.

What is the difference between rated power capacity and storage duration?

Rated power capacity is the total possible instantaneous discharge capability (in kilowatts [kW] or megawatts [MW]) of the BESS, or the maximum rate of discharge that the BESS can achieve, starting from a fully charged state. Storage duration is the amount of time storage can discharge at its power capacity before depleting its energy capacity.

Should energy storage systems be recharged after a short duration?

An energy storage system capable of serving long durations could be used for short durations, too. Recharging after a short usage period could ultimately affect the number of full cycles before performance declines. Likewise, keeping a longer-duration system at a full charge may not make sense.

What is an energy storage system battery?

Like a common household battery, an energy storage system battery has a "duration" of time that it can sustain its power output at maximum use. The capacity of the battery is the total amount of energy it holds and can discharge.



Maximum charge and discharge times of energy storage power stat



[Applicable power ranges and discharge ...](#)

In order to know the use that can be given to different energy storage technologies, in Figure 42, a comparison of the rated power vs the energy ...

[Energy Storage Systems: Duration and Limitations](#)

Nov 17, 2023 · Like a common household battery, an energy storage system battery has a "duration" of time that it can sustain its power output at maximum use. The capacity of the ...



[Understanding Energy Storage Duration](#)

Dec 4, 2025 · When we talk about energy storage duration, we're referring to the time it takes to charge or discharge a unit at maximum power. Let's ...

How long does it take for an energy storage station to discharge?

Mar 3, 2024 · The magnitude of an energy storage station's capacity directly impacts the length of time it can discharge energy efficiently. High-capacity installations can sustain a discharge for ...



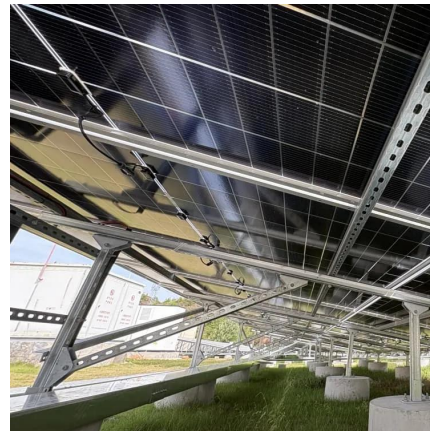
[Discharge time of energy storage power station](#)

Rated power capacity is the total possible instantaneous discharge capability (in kilowatts [kW] or megawatts [MW]) of the BESS, or the maximum rate of discharge that the BESS can achieve, ...



[Grid-Scale Battery Storage: Frequently Asked Questions](#)

Jul 11, 2023 · What is grid-scale battery storage?
Battery storage is a technology that enables power system operators and utilities to store energy for later use. A battery energy storage ...



[Understanding BESS: MW, MWh, and Charging/Discharging ...](#)

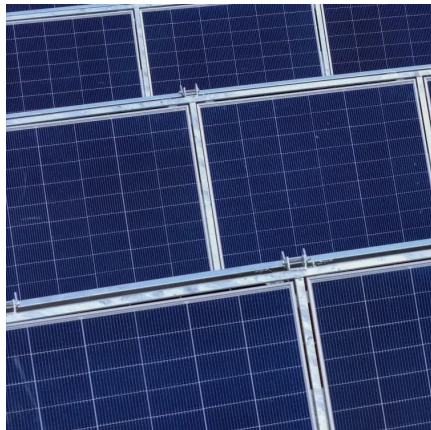
Sep 15, 2024 · Battery Energy Storage Systems (BESS) are essential components in modern energy infrastructure, particularly for integrating renewable energy sources and enhancing grid ...





[Energy Storage Systems: Duration and ...](#)

Nov 17, 2023 · Like a common household battery, an energy storage system battery has a "duration" of time that it can sustain its power output at ...

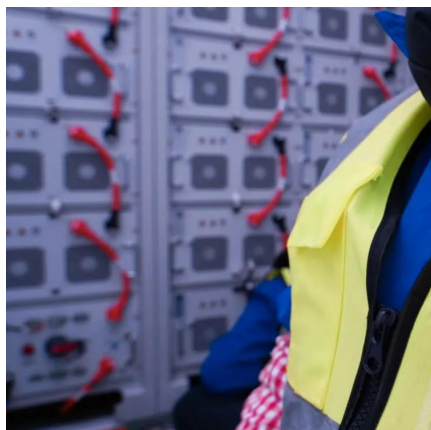


[Understanding BESS: MW, MWh, and ...](#)

Sep 15, 2024 · Battery Energy Storage Systems (BESS) are essential components in modern energy infrastructure, particularly for integrating ...

[Battery Energy Storage System Evaluation Method](#)

Jan 30, 2024 · The method then processes the data using the calculations derived in this report to calculate Key Performance Indicators: Efficiency (discharge energy out divided by charge ...



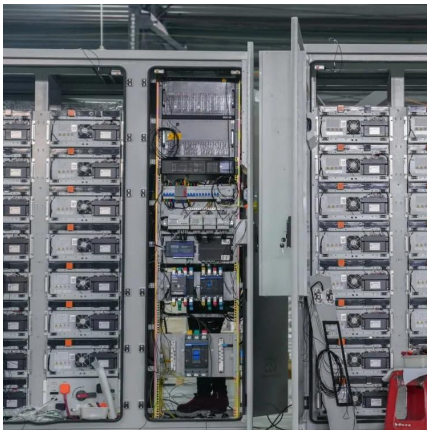
Economics of stationary electricity storage with various charge ...

Aug 1, 2019 · We underline the role of charge and discharge durations as a criterion for economic segmentation of technologies and services. We highlight the complementary value of storage ...



[Applicable power ranges and discharge power duration of ...](#)

In order to know the use that can be given to different energy storage technologies, in Figure 42, a comparison of the rated power vs the energy stored and the discharge time of different ESS ...



[Optimal Energy Storage Systems for Long Charge/Discharge ...](#)

Jul 7, 2022 · The interest for long-term energy storage in electrical grid provided with renewable energy sources is presently growing, because of the wide range of service that such systems ...

[Understanding Energy Storage Duration](#)

Dec 4, 2025 · When we talk about energy storage duration, we're referring to the time it takes to charge or discharge a unit at maximum power. Let's break it down: Battery Energy Storage ...



Contact Us

For technical specifications, project proposals, or partnership inquiries, please visit:
<https://www.eiei.pl>



Scan QR Code for More Information



<https://www.eiei.pl>