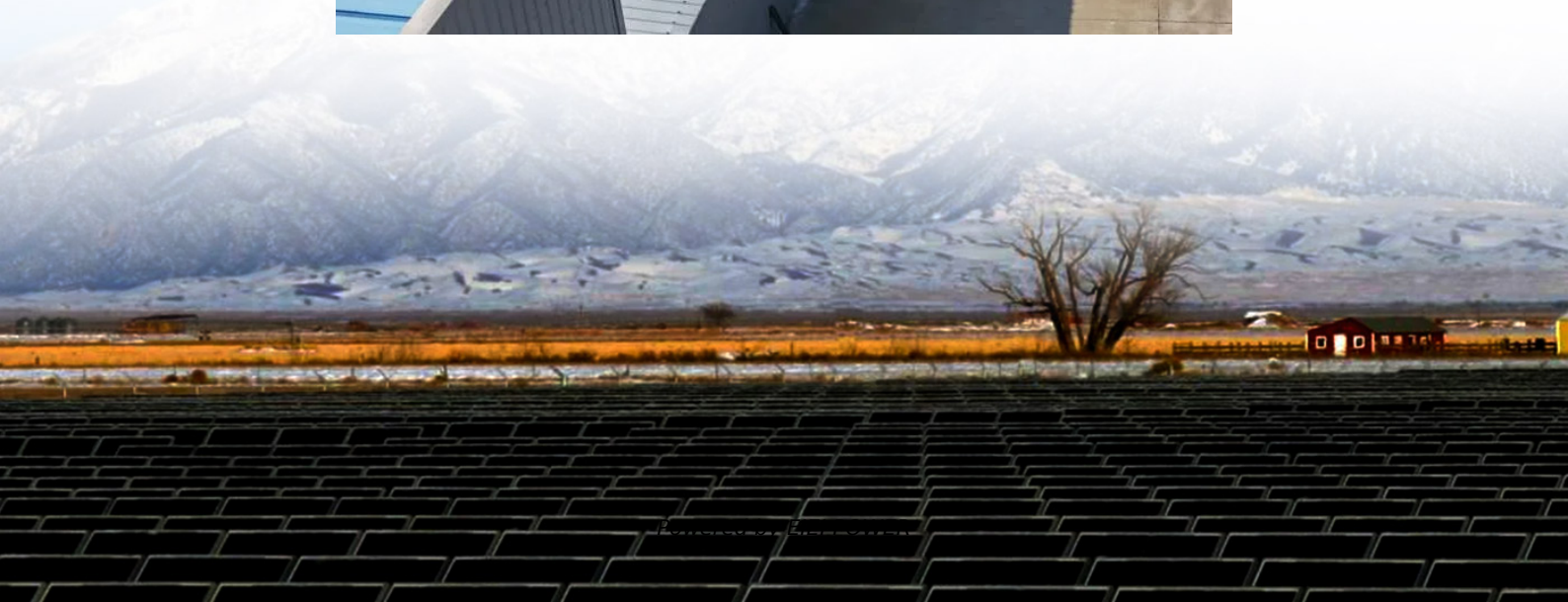


Large inverter requirements for batteries





Overview

What is the recommended battery size for an inverter?

Interpreting Results: Once you input the required data, the calculator will generate the recommended battery size in ampere-hours (Ah). For instance, if your power consumption is 500 watts, the usage time is 4 hours, and the inverter efficiency is 90%, the calculator might suggest a battery size of approximately 222 Ah.

What is the capacity of an inverter battery?

The capacity of an inverter battery, measured in ampere-hours (Ah), determines how much power it can store and supply over time. A higher Ah rating means the battery can provide backup power for a longer duration before requiring a recharge. The basic formula for calculating battery capacity is:.

How to choose an inverter battery?

When selecting an inverter battery, always consider long-term reliability, warranty coverage, and maintenance requirements. Investing in a high-quality battery prevents frequent replacements and reduces downtime in industrial operations.

What size inverter for a 12V 200Ah battery?

For a 12V 200Ah battery (2.4kWh), a 2000W inverter is ideal. Formula: $\text{Inverter Wattage} \leq (\text{Battery Voltage} \times \text{Ah Rating} \times 0.8)$. Factor in surge power needs but prioritize sustained loads. Always check the battery's max discharge rate (C-rate) to avoid exceeding safe limits. When sizing for 24V or 48V systems, recalculate using the higher voltage.



Large inverter requirements for batteries

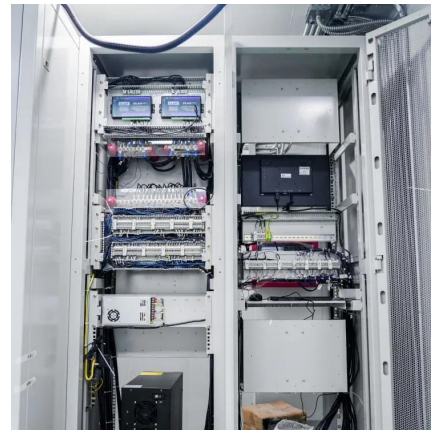


Inverter Sizing: Can Your Inverter Be Too Big for Your Battery ...

Apr 14, 2025 · An inverter can indeed be too big for your battery bank. An oversized inverter might waste energy and raise operating costs. To prevent this, ensure the inverter size matches your ...

[Calculate Battery Size for Inverter Calculator](#)

Mar 14, 2025 · The Calculate Battery Size for Inverter Calculator helps you determine the optimal battery capacity needed to support your inverter ...



What are the requirements for lithium batteries in solar inverters

Aug 29, 2025 · After understanding the core requirements, consider the following three points when selecting a product: Preferably choose an "inverter + lithium battery" package: Inverters ...

[Determining the Solar and Inverter Size](#)

...

Jul 29, 2025 · When planning an off-grid or backup power system, one of the first questions people ask is: How do I determine the right Size of solar ...



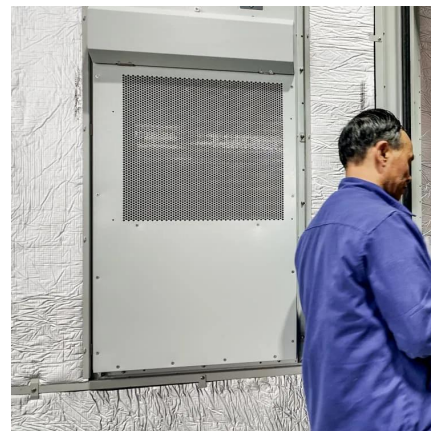
[\(PDF\) Large-Scale Battery Inverter and Energy Capacity ...](#)

Apr 5, 2025 · In this paper, a large-scale BESS sizing framework is developed to obtain the optimal battery inverter size and energy capacity.



[Can an Inverter Be Too Big for Your Battery System?](#)

How to Calculate the Right Inverter Size for Your Battery Match the inverter's continuous wattage rating to the battery's discharge capacity. For a 12V 200Ah battery (2.4kWh), a 2000W inverter ...



[How to Choose the Right Inverter for Lithium Batteries?](#)

Apr 11, 2025 · Answer: To choose the right inverter for lithium batteries, match the inverter's voltage and capacity to your battery's specifications, prioritize pure sine wave inverters for ...





[Large-Scale Battery Inverter and Energy](#)

...

Apr 5, 2025 · This paper proposed a large-scale battery sizing framework to obtain the optimal battery energy capacity and the inverter size ...



How to Calculate the Right Inverter Battery Capacity for Your Needs

Feb 24, 2025 · Learn how to calculate the right inverter battery capacity for your needs with a simple formula. Understand ...

[Calculate Battery Size for Inverter Calculator](#)

Mar 14, 2025 · The Calculate Battery Size for Inverter Calculator helps you determine the optimal battery capacity needed to support your inverter system. By inputting critical parameters such ...



[Why Can an Inverter Be Too Big for a Battery?](#)

When considering whether an inverter can be too big for a battery, it's essential to understand the implications of mismatched capacities. An oversized inverter may lead to inefficiencies, ...



Determining the Solar and Inverter Size Needed to Charge a Battery

Jul 29, 2025 · When planning an off-grid or backup power system, one of the first questions people ask is: How do I determine the right Size of solar and inverter system needed to charge ...



Large-Scale Battery Inverter and Energy Capacity Sizing for ...

Apr 5, 2025 · This paper proposed a large-scale battery sizing framework to obtain the optimal battery energy capacity and the inverter size considering the regulation and contingency ...

How to Calculate the Right Inverter Battery Capacity for Your ...

Feb 24, 2025 · Learn how to calculate the right inverter battery capacity for your needs with a simple formula. Understand power requirements, efficiency losses, and the best battery types ...



Contact Us

For technical specifications, project proposals, or partnership inquiries, please visit:
<https://www.eiei.pl>



Scan QR Code for More Information



<https://www.eiei.pl>