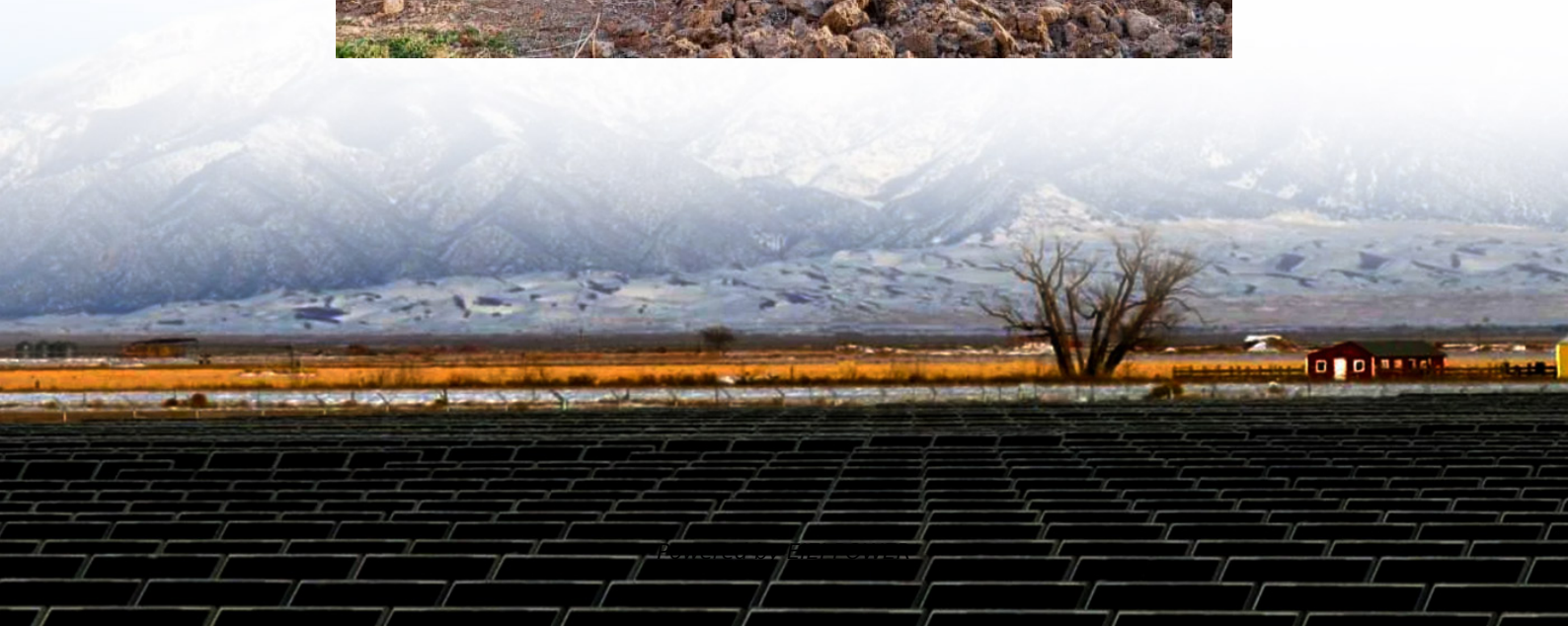


Is the lithium iron phosphate battery station cabinet stable





Overview

What is lithium iron phosphate (LiFePO₄)?

Lithium Iron Phosphate (LiFePO₄) battery cells are quickly becoming the go-to choice for energy storage across a wide range of industries.

Can a lithium iron phosphate cathode be fabricated using hierarchically structured composite electrolytes?

In this research, we present a report on the fabrication of a Lithium iron phosphate (LFP) cathode using hierarchically structured composite electrolytes. The fabrication steps are rationally designed to involve different coating sequences, considering the requirements for the electrode/electrolyte interfaces.

What is the ionic conductivity of a lithium iron phosphate (LFP) cathode?

The dual-layer electrolytes possess high ionic conductivity of $2.60 \times 10^{-4} \text{ S cm}^{-1}$. The Li-metal battery shows excellent cyclic stability after 200 cycles. In this research, we present a report on the fabrication of a Lithium iron phosphate (LFP) cathode using hierarchically structured composite electrolytes.

What is a LiFePO₄ battery?

LiFePO₄ is a type of lithium-ion battery distinguished by its iron phosphate cathode material. Unlike traditional lithium-ion batteries, LiFePO₄ batteries offer superior thermal stability, robust power output, and a longer cycle life. These qualities make them an excellent choice for applications that prioritize safety, efficiency, and longevity.



Is the lithium iron phosphate battery station cabinet stable

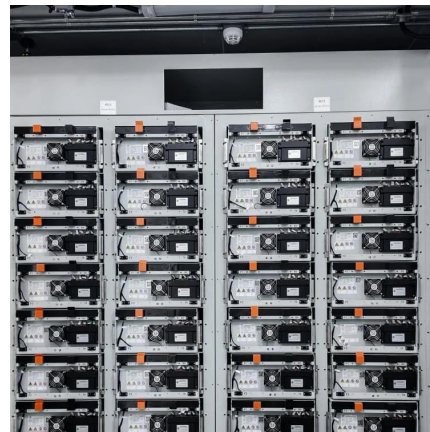


[Everything You Need to Know About LiFePO4 Battery Cells: A](#)

6 days ago · Complete Guide to LiFePO4 Battery Cells: Advantages, Applications, and Maintenance Introduction to LiFePO4 Batteries: The Energy Storage Revolution Lithium Iron ...

[Is the lithium iron phosphate battery cabinet stable](#)

A lithium iron phosphate (LiFePO4) battery is a common type of rechargeable battery. People also know it as a lithium phosphate battery. It uses phosphorous, lithium, and iron to create a stable ...



[What is a LiFePO4 Power Station and How Does It Work?](#)

Oct 24, 2025 · A LiFePO4 power station is a portable energy solution using lithium iron phosphate batteries, offering safety, long lifespan, and eco-friendly performance.

Examining the Overall Stability and Safety Performance of Lithium Iron

A Chemically and Operationally Stable Power Solution The Lithium Iron Phosphate Battery is among the stable and secure lithium-ion battery



technologies available today. With good ...



[Lithium iron phosphate battery station cabinet constant ...](#)

5 days ago · Thermally modulated lithium iron phosphate batteries for mass Here the authors report that, when operating at around 60 °C, a low-cost lithium iron phosphate- based battery ...



[Lithium Iron Phosphate Battery Solar: Complete 2025 Guide](#)

3 days ago · Lithium iron phosphate batteries use lithium iron phosphate (LiFePO4) as the cathode material, combined with a graphite carbon electrode as the anode. This specific ...



[What Are the Most Stable Batteries? The ...](#)

Oct 11, 2024 · Lithium Iron Phosphate (LiFePO4) batteries are among the most stable options available. They offer excellent thermal stability at high ...





Lithium iron phosphate cathode supported solid lithium batteries ...

Mar 15, 2024 · In this research, we present a report on the fabrication of a Lithium iron phosphate (LFP) cathode using hierarchically structured composite electroly...



Why Use Lithium Iron Phosphate As An "Energy Storage-Power Station

The widespread adoption of lithium iron phosphate batteries in energy storage scenarios such as power station stems from the high degree of matching between their technical characteristics ...

[Lithium iron phosphate battery energy storage container](#)

Jan 30, 2024 · What is a Narada NEPs LFP high capacity lithium iron phosphate battery?,while delivering exceptional warranty,safety,and life. Whether used in cabinet,container or building ...



What Are the Most Stable Batteries? The Ultimate Guide to Lithium Iron

Oct 11, 2024 · Lithium Iron Phosphate (LiFePO4) batteries are among the most stable options available. They offer excellent thermal stability at high temperatures, chemical stability that ...



Contact Us

For technical specifications, project proposals, or partnership inquiries, please visit:
<https://www.eiei.pl>

Scan QR Code for More Information



<https://www.eiei.pl>