

Is the energy storage station a power source





Overview

What are battery storage power stations?

Battery storage power stations are usually composed of batteries, power conversion systems (inverters), control systems and monitoring equipment. There are a variety of battery types used, including lithium-ion, lead-acid, flow cell batteries, and others, depending on factors such as energy density, cycle life, and cost.

What are the core functions of energy storage power stations?

In addition to these core functions, functions such as anti-backflow protection, support for parallel/off-grid operation, and islanding protection further enhance the reliability and versatility of energy storage power stations.

What time does the energy storage power station operate?

During the three time periods of 03:00–08:00, 15:00–17:00, and 21:00–24:00, the loads are supplied by the renewable energy, and the excess renewable energy is stored in the FESPS or/and transferred to the other buses. Table 1. Energy storage power station.

Should energy storage power stations be scaled?

In addition, by leveraging the scaling benefits of power stations, the investment cost per unit of energy storage can be reduced to a value lower than that of the user's investment for the distributed energy storage system, thereby reducing the total construction cost of energy storage power stations and shortening the investment payback period.



Is the energy storage station a power source

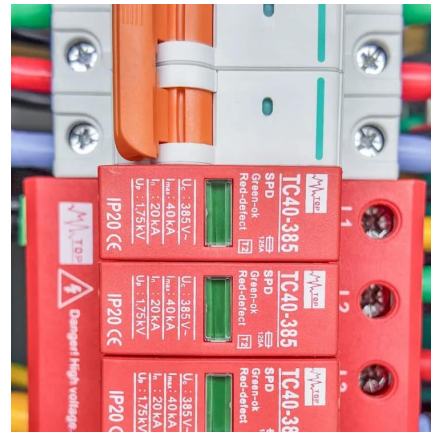


[China's Largest Grid-Forming Energy Storage Station ...](#)

Apr 9, 2024 · It is a strong measure taken by Ningxia Power to implement the "Four Revolutions and One Cooperation" new strategy for energy security, promote the integration of source-grid ...

[How Does an Energy Storage Power Station Work? The ...](#)

From Sunshine to Socket: The Magic of Energy Storage Imagine a giant "power bank" for cities--this is essentially what an energy storage power station does. Unlike your smartphone ...



[What is an energy storage station](#)

In most cases, a stationary energy storage system will include an array of batteries, an electronic control system, inverter and thermal management system within an enclosure. Unlike a fuel ...

[Shanghai Electric Distributed Energy Co Ltd-](#)

Nov 1, 2024 · Instead, taking the power grid as a link, the independent and scattered grid-side and power source-side energy storage power station resources are integrated and uniformly ...



What is Energy Storage Power Station? Uses, How It Works ...

Oct 12, 2025 · Energy Storage Power Stations are transforming how we generate, store, and distribute electricity. These facilities store excess energy generated from renewable sources ...



[Battery storage power station - a comprehensive guide](#)

3 days ago · A battery storage power station, also known as an energy storage power station, is a facility that stores electrical energy in batteries for later use. It plays a vital role in the modern ...



[What is the principle of energy storage power station?](#)

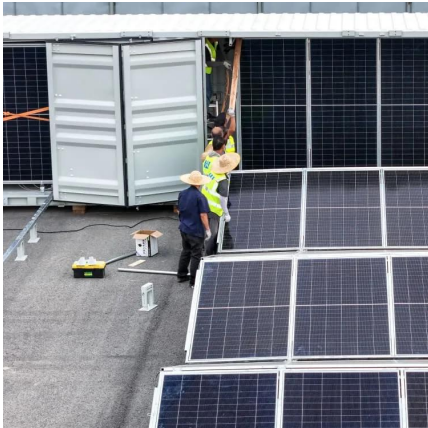
Jan 14, 2024 · Energy storage plays a crucial role in grid resilience and reliability, enabling smoother transitions between different power generation sources. As renewable energy ...





[Exploring Energy Storage Power Stations in China: A Key ...](#)

Jul 2, 2025 · Energy storage power stations in China represent a pivotal shift in how energy is produced, managed, and consumed. These facilities store energy generated from various ...



[What is the principle of energy storage power ...](#)

Jan 14, 2024 · Energy storage plays a crucial role in grid resilience and reliability, enabling smoother transitions between different power ...

[Flexible energy storage power station with dual functions of power ...](#)

Nov 1, 2022 · The high proportion of renewable energy access and randomness of load side has resulted in several operational challenges for conventional power systems. Firstly, this paper ...



[What is energy storage power station? _ NenPower](#)

Sep 24, 2024 · 1. Energy storage power stations are critical infrastructure designed to store energy for later use, particularly from intermittent renewable sources.2. They work by ...



Contact Us

For technical specifications, project proposals, or partnership inquiries, please visit:
<https://www.eiei.pl>

Scan QR Code for More Information



<https://www.eiei.pl>