

Is it okay if the inverter voltage is higher





Overview

Are inverters too big?

Inverters play a crucial role in converting DC power to AC power, but choosing the right size is essential for optimal performance. In this article, we'll explore the potential implications of using an inverter that is too big for your power needs, shedding light on the effects and considerations associated with oversized inverters.

What happens if inverter voltage is too high?

Exceeding the specified maximum input voltage for an inverter can lead to various issues. These include overheating, potential damage to internal components, and the risk of a malfunction. To mitigate these risks, manufacturers often incorporate overvoltage protection mechanisms into their inverters. How do I choose an inverter voltage?

.

Why is inverter voltage important?

In the realm of power electronics, the inverter voltage is a critical parameter that dictates its performance, compatibility, and safety. Understanding the intricacies of inverter voltage is essential for anyone seeking a reliable and efficient power supply.

Are oversized inverters more efficient?

Inverters achieve peak efficiency at 70-90% load. When oversized, they operate at low loads (e.g., 10-30%), wasting energy through higher standby consumption (up to 50W daily) and reduced conversion efficiency. Upfront Expense: Larger inverters cost 20-50% more than appropriately sized models.



Is it okay if the inverter voltage is higher



[Why DC supply voltage is increasing when inverter is ...](#)

Mar 31, 2024 · If I connect my inverter to a resistive load or small inductive load the DC supply voltage (in my application it is 56 V) stays constant. However, if a powerful induction motor is ...

[Why DC supply voltage is increasing when ...](#)

Mar 31, 2024 · If I connect my inverter to a resistive load or small inductive load the DC supply voltage (in my application it is 56 V) stays constant. ...



[Inverter too high output voltage than normal, problem?](#)

Mar 14, 2023 · The Luminous EcoWatt (Eco means cheap) Neo 700 inverter is rated at 600VA with a modified waveform. It has a detection voltage range of 180V to 260V and turns on when ...

[What Happens If Your Inverter Is Too Big?](#)

1 day ago · An oversized power inverter can undermine the efficiency, cost-effectiveness, and longevity of your power system. While it might seem ...



WHAT TO DO IF INVERTER VOLTAGE IS TOO HIGH

What is the difference between low voltage and high voltage battery backup? When you choose a low-voltage home battery backup, the inverter needs to work harder and reduce an input ...

What Happens If the Inverter Is Too Big

Nov 20, 2023 · Inverters play a crucial role in converting DC power to AC power, but choosing the right size is essential for optimal performance. In this article, we'll explore the potential ...



Understanding High DC Bus Voltage in Inverters

Jun 26, 2025 · A DC bus voltage higher than expected on an inverter typically indicates one or more of the following technical issues:
Regenerative Braking or Overhauling Load: If the load ...



Understanding inverter voltage

Jan 10, 2024 · In the realm of power electronics, the inverter voltage is a critical parameter that dictates its performance, compatibility, and safety. ...

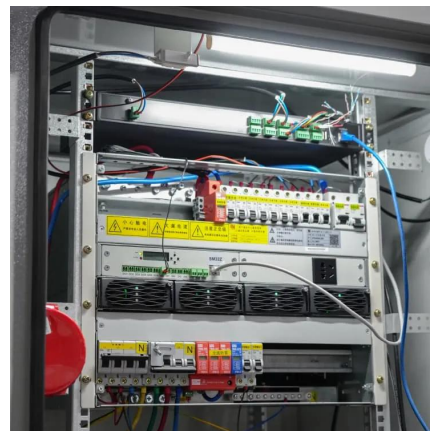


What Happens If the Inverter Is Too Big

Nov 20, 2023 · Inverters play a crucial role in converting DC power to AC power, but choosing the right size is essential for optimal performance. In ...

Is your inverter too big? Understanding the ...

2 days ago · The main drawback: higher idle consumption The most significant downside of using an oversized inverter is its idle consumption ...



Understanding inverter voltage

Jan 10, 2024 · In the realm of power electronics, the inverter voltage is a critical parameter that dictates its performance, compatibility, and safety. Understanding the intricacies of inverter ...



Is your inverter too big? Understanding the downsides of ...

2 days ago · The main drawback: higher idle consumption The most significant downside of using an oversized inverter is its idle consumption - the energy the inverter draws simply to stay ...

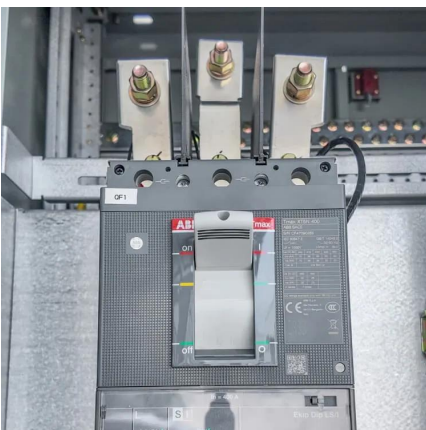


[Is Overloading Your Solar Inverter a Good Idea?](#)

Aug 11, 2023 · When your solar panels produce more power than your solar inverter can handle, it causes an overload. In simpler terms, you're using ...

[What Happens If Your Inverter Is Too Big? Risks, Solutions](#)

1 day ago · An oversized power inverter can undermine the efficiency, cost-effectiveness, and longevity of your power system. While it might seem like a "safer" choice, improper sizing ...



[Is Overloading Your Solar Inverter a Good Idea?](#)

Aug 11, 2023 · When your solar panels produce more power than your solar inverter can handle, it causes an overload. In simpler terms, you're using your inverter at a level higher than it's ...



What Happens If You Overload Your Inverter? Real Dangers ...

May 26, 2025 · What happens if you overload your inverter? From automatic shutdowns to serious damage, an overloaded inverter can lead to real trouble. This in-depth guide breaks ...



Contact Us

For technical specifications, project proposals, or partnership inquiries, please visit:
<https://www.eiei.pl>

Scan QR Code for More Information



<https://www.eiei.pl>