

IoT Wireless Outdoor Base Station Connection





Overview

What is the TP-Link outdoor wireless base station?

The TP-LINK Outdoor Wireless Base Station pairs professional performance with user-friendly design, making it the perfect solution for both business and home users. Two external RP-SMA antenna interfaces allow the Outdoor Wireless Base Station to integrate seamlessly with TP-LINK's line of sector and dish antennas.

What is the Willow® IoT gateway?

The Willow® IOT Gateway is a ruggedized outdoor (IP66) IOT gateway designed for Harssh Industrial Environment. It supports both WIFI and 3G/4G/LTE wireless protocols and allows a very easy connection to our Willow® IOT sensors.

How do base stations connect to a network server?

To connect to the network server, base stations can use various backhaul options, including Ethernet, cellular, or satellite. The choice of backhaul depends on the deployment location and available infrastructure. How Does it Work?

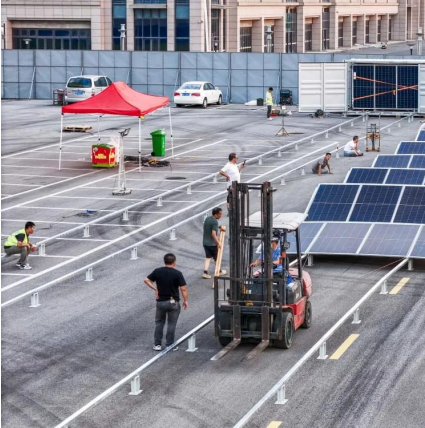
A Behind-the-Scenes Look at LoRaWAN Communication A LoRaWAN network consists of several key components:.

What is the difference between a base station and a gateway?

Both terms are sometimes used interchangeably. However, a base station typically refers to a dedicated device with a specific LoRaWAN configuration, while a gateway might have broader functionalities beyond LoRaWAN communication. How much does a LoRaWAN Base Station cost?



IoT Wireless Outdoor Base Station Connection



LoRaWAN Base Station: Your Ultimate Guide to Long-Range IoT ...

Dec 5, 2025 · Unlock the potential of LoRaWAN Base Stations for long-range IoT communication. Learn their benefits, applications, and more!

[Outdoor LoRaWAN Gateway , LoRaWAN Base ...](#)

ManThink's outdoor LoRaWAN gateway features IP67-rated protection, 4G/Wi-Fi/Ethernet backhaul, and multi-band support. Ideal for smart ...



[IOT GATEWAY with 4G Connectivity for Wifi Sensors , ...](#)

Dec 1, 2025 · The IOT Gateway supports both WIFI and 3G/4G/LTE wireless protocols and allows a very easy connection to our wireless IOT sensors.

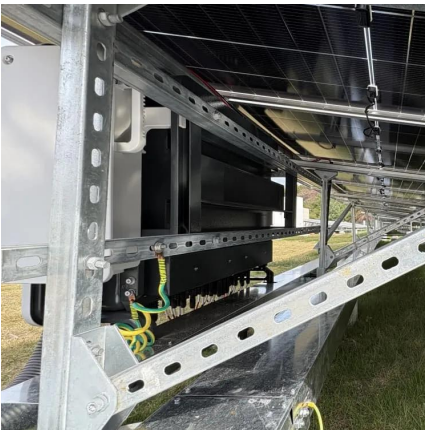
IOT GATEWAY with 4G Connectivity for Wifi Sensors , Overview

Dec 1, 2025 · The IOT Gateway supports both WIFI and 3G/4G/LTE wireless protocols and allows a very easy connection to our wireless IOT sensors.



[LoRaWAN Base Station: Your Ultimate Guide ...](#)

Dec 5, 2025 · Unlock the potential of LoRaWAN Base Stations for long-range IoT communication. Learn their benefits, applications, and more!



[Conduit® IP67 Base Station Cellular Industrial Gateways](#)

Built for the toughest environments, the MultiTech Conduit® IP67 Base Station delivers secure, reliable LoRaWAN® connectivity for outdoor and industrial IoT deployments. Now, every unit ...



[Outdoor LoRaWAN Gateway , LoRaWAN Base Station Solutions](#)

ManThink's outdoor LoRaWAN gateway features IP67-rated protection, 4G/Wi-Fi/Ethernet backhaul, and multi-band support. Ideal for smart cities, farms, and remote industrial ...





5GHz 300Mbps Outdoor Wireless Base Station

May 10, 2020 · Long-Distance Wireless Data Transmission Two external RP-SMA antenna interfaces allow the Outdoor Wireless Base Station to integrate seamlessly with TP-LINK's line ...



? Base Station Specification

Jul 15, 2022 · ? Base Station by SENSORO, featuring excellent outdoor signal coverage and strong hardware protection, is designed and built for outdoor IoT application scenarios that ...

Robust Outdoor IoT Connectivity , LPWAN & Wi-Fi HaLow

Aug 18, 2025 · From Vast Farmlands to Dense Smart Cities: Why Your Outdoor Connection is Everything. In the world of the Wireless IoT, the conversation often gravitates towards ...



Base-station node implementation for real-time IoT/WSN ...

Nov 29, 2023 · The presented paper proposes a model of the Internet of Things (IoT) based Wireless Sensor Network (WSN) base station node for outdoor localisation. The node is ...



[5GHz 300Mbps Outdoor Wireless Base ...](#)

May 10, 2020 · Long-Distance Wireless Data Transmission Two external RP-SMA antenna interfaces allow the Outdoor Wireless Base Station to ...

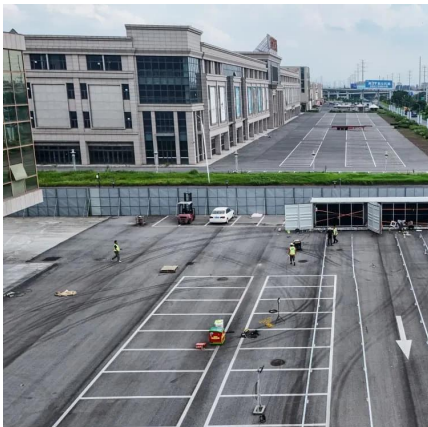


[Conduit® IP67 Base Station Cellular Industrial ...](#)

Built for the toughest environments, the MultiTech Conduit® IP67 Base Station delivers secure, reliable LoRaWAN® connectivity for outdoor and ...

[China NB-IOT Outdoor Base Station Manufacture and ...](#)

Nov 25, 2025 · Overview o MNB1200W series outdoor base stations are high-performance integrated base stations based on NB-IOT technology and support band B8/B5/B26. o ...



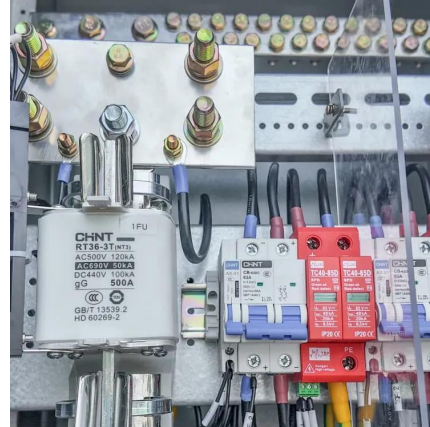
[China NB-IOT Outdoor Base Station ...](#)

Nov 25, 2025 · Overview o MNB1200W series outdoor base stations are high-performance integrated base stations based on NB-IOT technology and ...



[Landlink: Advanced IoT Base Station Technology , SCLab](#)

Discover Landlink, an advanced IoT base station technology by Smart Construction Laboratory. Offering high-speed, low-latency wireless connectivity for construction sites, Landlink ensures ...



Contact Us

For technical specifications, project proposals, or partnership inquiries, please visit:
<https://www.eiei.pl>

Scan QR Code for More Information



<https://www.eiei.pl>