

Inverter voltage mode





Overview

What are inverter settings?

Inverter Settings 1. To set output voltage of inverter - This is normally 230 Vac. Possible values 210V ~ 245V. 2. Used to enable/disable the internal ground relay functionality. Connection between N and PE during inverter operation. - The ground relay is useful when an earth-leakage circuit-breaker is part of the installation.

How do I set up a voltage source inverter?

To get started: Confirm that no power source is connected to the design. Confirm that the output filter is correct for the mode that the device will run in. For example, voltage source inverter uses an LC filter. The L2 and L2N slot must be jumper wired as shown in Figure 11.

What is a voltage source inverter?

Voltage source inverters (VSIs) are commonly used in uninterruptible power supplies (UPS) to generate a regulated AC voltage at the output. Control design of such inverter is challenging because of the unknown nature of load that can be connected to the output of the inverter.

What is voltage-reactive power (VAR) mode?

2. Voltage-reactive power (“Volt-VAr”) mode In this mode, the solar PV system adjusts its reactive power injection (or absorption) based on the actual voltage, if the actual voltage is outside of a specified dead band. A typical control characteristic of Volt-VAr mode is shown in the figure.



Inverter voltage mode



[Voltage Source Inverter Reference Design \(Rev. E\)](#)

May 11, 2022 · Description This reference design implements single-phase inverter (DC/AC) control using a C2000™ microcontroller (MCU). The design supports two modes of operation ...

[Hybrid-mode control for grid-connected inverters and ...](#)

Sep 1, 2025 · The grid-connected inverters (GCIs) controlled by traditional Current-Source Mode (CSM) and Voltage-Source Mode (VSM) face challenges in simultaneously meeting the ...



[Voltage Control Using Inverter Reactive ...](#)

Dec 20, 2023 · 2. Voltage-reactive power ("Volt-VAr") mode In this mode, the solar PV system adjusts its reactive power injection (or absorption) based ...

[Voltage Control of Microgrid Inverter System Based on ...](#)

Feb 6, 2025 · ABSTRACT To enhance the robustness of the microgrid inverter system in islanded operation mode and speed up the response of the system, a novel voltage control strategy ...



Active and Reactive Power Control in a Three-Phase Photovoltaic Inverter

Jan 24, 2025 · Instead of expensive grid installations, PV systems can employ a voltage source inverter to utilize reactive power. The major objective is to inject and control 100 kW of three ...

9. Inverter Settings

Common-Mode Reduction SVPWM for Three-Phase Motor Fed by Two-Level 120° Mode Inverter - Circuit Diagram, Operation and Formula
A Low Common-Mode SVPWM for Two-Level Three-Phase Voltage Source Inverters
A Comprehensive Double-Vector Approach to Alleviate Common-Mode Voltage Understanding
Inverter Voltage: Definition, Functions, Type, And Tips
Voltage Control Using Inverter Reactive Power Control - HeatSpring Magazine
Inverter output voltage, grid voltage, and actual and reference grid
Common-mode voltage generated by the PWM inverter. , Download Common-mode voltage levels generated by the poles of inverter A or B [7 See allsolisinverters



How to enable Volt-Var / Q (U) function : ...

Aug 4, 2023 · The Q (U) function can be enabled on the inverter screen, for EN50549 grid standard Advanced Setting -> STD.Mode Settings -> ...



[Regulating Voltage: Recommendations for Smart Inverters](#)

Mar 31, 2025 · Regulating Voltage: Recommendations for Smart Inverters (Ric O'Connell, Curt Volkmann, Paul Brucke 2019)
This report from GridLab provides an introduction to voltage ...

[How to enable Volt-Var / Q \(U\) function : Service Center](#)

Aug 4, 2023 · The Q (U) function can be enabled on the inverter screen, for EN50549 grid standard Advanced Setting -> STD.Mode Settings -> Working Mode -> Set Mode 2: Volt-Var ...



[Voltage Control Using Inverter Reactive Power Control](#)

Dec 20, 2023 · 2. Voltage-reactive power ("Volt-Var") mode In this mode, the solar PV system adjusts its reactive power injection (or absorption) based on the actual voltage, if the actual ...

9. Inverter Settings

Sep 17, 2024 · 1. To set output voltage of inverter - This is normally 230 Vac. Possible values 210V ~ 245V. 2. Used to enable/disable the internal ground relay functionality. Connection ...



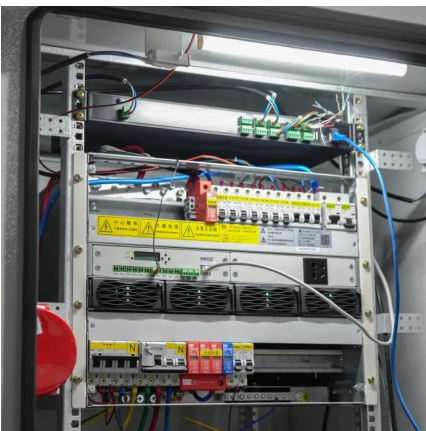


[Volt-Var Mode for Smart Inverters: Enhance ...](#)

Understanding Volt-Var Mode Volt-Var mode is a key feature in smart inverters used to manage power quality within distribution systems. With ...

[Active and Reactive Power Control in a Three ...](#)

Jan 24, 2025 · Instead of expensive grid installations, PV systems can employ a voltage source inverter to utilize reactive power. The major ...



[Volt-Var Mode for Smart Inverters: Enhance Efficiency](#)

Understanding Volt-Var Mode Volt-Var mode is a key feature in smart inverters used to manage power quality within distribution systems. With the increasing prevalence of distributed ...

Closed Loop operation of Transformer-less Inverter in Voltage ...

Oct 26, 2024 · A single stage single phase inverter topology derived from Cuk converter, with an input switched inductor, suitable for Photovoltaic-Grid interface is implemented in voltage ...





Contact Us

For technical specifications, project proposals, or partnership inquiries, please visit:
<https://www.eiei.pl>

Scan QR Code for More Information



<https://www.eiei.pl>