

# **Inverter shutdown voltage is lower than**





## Overview

---

Why does my inverter keep shutting down?

Loose cables and connections between your inverter and battery can cause it to shut down. This is because voltage can drop when you have loose wires as the electricity can flow efficiently. Inverters have auto shutdown settings when low voltage is detected as it is a sign of low battery levels.

Why does my inverter stop working if I have a low battery?

This is because voltage can drop when you have loose wires as the electricity can flow efficiently. Inverters have auto shutdown settings when low voltage is detected as it is a sign of low battery levels. It might think you have a low battery but it is just a loose cable.

What is inverter low voltage?

Now that we know what inverter low voltage is, let's explore some common causes behind it. One prevalent cause could be a faulty battery. An old or damaged battery may not be able to provide sufficient power, leading to low voltage from the inverter. Another possible cause could be an inadequate power source or improper electrical connections.

Do inverters have low voltage problems?

Properly grounding your inverter is crucial to avoid voltage fluctuations. In conclusion, inverter low voltage problems are not uncommon, but with the right knowledge and approach, they can be resolved. By understanding the causes behind such issues and following the appropriate diagnostics, you can get your inverter back to working optimally.



## Inverter shutdown voltage is lower than



### **Inverter Keeps Shutting Off? Here's How to Change the Low Voltage ...**

The low voltage disconnect feature is built into your inverter as a safeguard mechanism. It keeps an eye on your battery's voltage levels and will shut it off when the voltage is below a preset ...

### [Will My Inverter Restart After a Low Battery Shutdown?](#)

However, some advanced inverters may have settings or features that allow for automatic restart after a low voltage shutdown. These inverters can detect when the battery voltage rises to a ...



### [Low Battery Inverter Shutdown](#)

Jul 19, 2020 · 680ah LifePo4 Victron 2x120 pass through inverter 1140w solar My inverter has been shutting down due to "Low Battery." However the SOC is at 73% and the discharge floor ...



### [How to Address Inverter Low Voltage Issues for Reliable ...](#)

Apr 3, 2025 · Inverters play a crucial role in industrial automation and energy management, ensuring seamless operation and efficiency. However, voltage instability, particularly low ...



### MultiPlus II Inverter cutoff NOT at the low-shutdown voltage

Oct 21, 2024 · When the voltage shown in VictronConnect dropped to 44.38V, the MM-II shut down the inverter. Before the shutdown of the inverter, the voltage was gradually/slowly dropping so ...



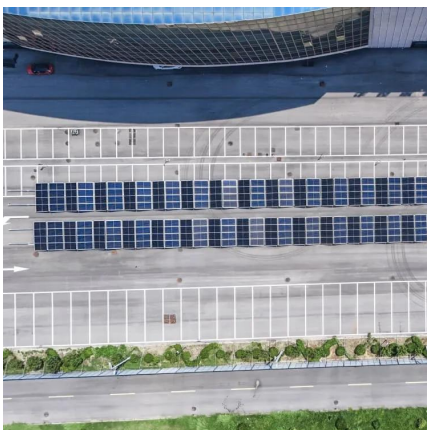
### [Inverter Keeps Shutting Off? Here's How to ...](#)

The low voltage disconnect feature is built into your inverter as a safeguard mechanism. It keeps an eye on your battery's voltage levels and will shut ...



### [Will My Inverter Restart After a Low Battery ...](#)

However, some advanced inverters may have settings or features that allow for automatic restart after a low voltage shutdown. These inverters can ...





## [How to Address Inverter Low Voltage Issues ...](#)

Apr 3, 2025 · Inverters play a crucial role in industrial automation and energy management, ensuring seamless operation and efficiency. However, ...



## [Do Inverters Turn Off When Voltage is too low?](#)

Oct 26, 2021 · Group, If my batteries drop too low and the grid is off will an inverter turn off (stop outputting AC current)? I want to verify it will shut off and not provide dangerously low voltage ...

## [7 Reasons Your Inverter Shuts Down \(Avoid ...](#)

4. Loose Cables Loose cables and connections between your inverter and battery can cause it to shut down. This is because voltage can drop when ...



## **Voltage Troubles? A Guide to Diagnosing Inverter Low Voltage ...**

Dec 17, 2023 · Solutions for Inverter Low Voltage Problems Now that we have identified some potential causes, let's explore the solutions for inverter low voltage problems. Firstly, if your ...



## Why is my inverter shutting off due to "battery low voltage"?

Jun 24, 2021 · Both our standard inverter and hybrid inverter/chargers have low voltage protections. In a hybrid inverter, you may get warning about "battery low voltage" or "battery ...



### [7 Reasons Your Inverter Shuts Down \(Avoid These Issues!\)](#)

4. Loose Cables Loose cables and connections between your inverter and battery can cause it to shut down. This is because voltage can drop when you have loose wires as the electricity can ...



## 9. Inverter Settings

Sep 17, 2024 · To set the voltage at which the inverter restarts after low voltage shut-down. - To prevent rapid fluctuation between shut-down and start up, it is recommended that this value be ...



## Contact Us

For technical specifications, project proposals, or partnership inquiries, please visit:  
<https://www.eiei.pl>



## Scan QR Code for More Information



<https://www.eiei.pl>