

Inverter power limit





Overview

What happens if a PV inverter reaches a maximum current limit?

The inverter's DC input current should always stay within its maximum limit. If the PV module's output current exceeds this limit, it may lead to current-limited operation and potential inverter damage, reducing power generation efficiency and return on investment.

What is a maximum input current in a PV inverter?

1. Maximum Input Current Definition: The maximum operating current allowed to pass through the PV side of an inverter. The input current is especially critical in scenarios with high peak power currents, such as those involving thin-film PV modules.

How many kW can a PV inverter output?

Export to Grid: Up to 4kW can be sent back to the grid because of the export limit. This means: The inverter can handle this 5kW AC output perfectly. However, the PV array is generating 10kW, so we have:.

How does a PV inverter reduce power output?

By reducing the current, it effectively reduces the power output. Maximum Power Point Tracking (MPPT): Normally, the inverter uses MPPT to maximise the power output from your PV array. During curtailment, the MPPT algorithm adjusts to a point where the power output is reduced to match the inverter's capacity.



Inverter power limit



The optimal capacity ratio and power limit setting method of ...

Sep 1, 2023 · Aiming at the problem of optimal capacity ratio and power limit setting of photovoltaic power generation system, this paper takes the power cost of photovoltaic power ...

Understanding Solar Inverter Curtailment: What Happens to ...

Aug 23, 2024 · Maximum Power Point Tracking (MPPT): Normally, the inverter uses MPPT to maximise the power output from your PV array. During curtailment, the MPPT algorithm ...



[Inverter Operating Limits](#)

3 days ago · Overview Physical models used Grid inverter Inverter Operating Limits The inverter input electronics assumes the function of choosing the ...

[Decoding Inverter Parameters \(Part I\)](#)

Jan 25, 2025 · The inverter's DC input current should always stay within its maximum limit. If the PV module's output current exceeds this limit, it may ...



[Inverter Operating Limits](#)

3 days ago · Overview Physical models used Grid inverter Inverter Operating Limits The inverter input electronics assumes the function of choosing the operating point on the I/V curve of the ...



[Limit the maximum power of the photovoltaic inverter](#)

What is the use of bus voltage in a photovoltaic inverter? The increase in bus voltage is used as the control signal of the PV output current to reduce the photovoltaic output current, such that ...



[Understanding Solar Inverter Curtailment: ...](#)

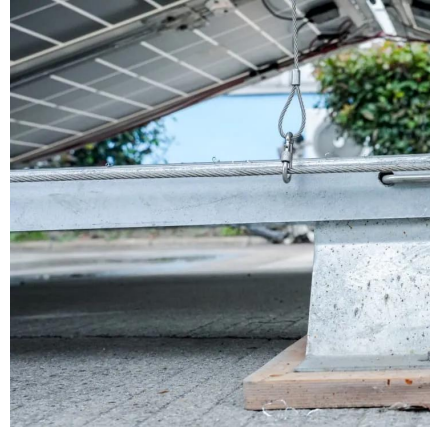
Aug 23, 2024 · Maximum Power Point Tracking (MPPT): Normally, the inverter uses MPPT to maximise the power output from your PV array. ...





Grid power limitation

Nov 3, 2025 · Here you can decide whether you have a grid limitation, and specify its value. The limitation may be defined: either at the inverter level: the inverter power is limited to the rated ...



Limit inverter power applies to total DC power

Aug 24, 2023 · Limit inverter power applies to total DC power Hello community, I am running a MultiPlus II 24/3000/70 with Cerbero GX and SmartSolar 100/50 in ESS mode together with a ...

"Limit inverter power"

Sep 19, 2023 · "Limit inverter power" - expected operation Hello, I have a pair of 240V MultiPlus-II 5kW units connected in parallel and operating effectively to a grid set-point of 50W; charging ...



Decoding Inverter Parameters (Part I)

Jan 25, 2025 · The inverter's DC input current should always stay within its maximum limit. If the PV module's output current exceeds this limit, it may lead to current-limited operation and ...



Grid power limitation

Nov 3, 2025 · Here you can decide whether you have a grid limitation, and specify its value. The limitation may be defined: either at the inverter level: ...



Export Power Limit Solution

Export Power Limit Solution GoodWe's Smart Meter is designed with high-precision small-scale dimensions, and convenient operation and ...

Export Power Limit Solution

Export Power Limit Solution GoodWe's Smart Meter is designed with high-precision small-scale dimensions, and convenient operation and installation. It is available for both single-phase and ...



Power Limitation of SOFAR Inverters

Nov 22, 2024 · Feed-in limit For the feed-in limit in kW, a Chint DTSU 666 energy meter needs to be installed and connected to the inverter. If no energy meter is installed, the inverter will use ...



Contact Us

For technical specifications, project proposals, or partnership inquiries, please visit:
<https://www.eiei.pl>

Scan QR Code for More Information



<https://www.eiei.pl>